

FLAT RATE TIME SCHEDULE

SEA-DOO®
PERSONAL WATERCRAFT

1998

VOLUME 1

SPX*

GS*

GSX Ltd*

GTS* / GTi* / GTX / GTX rfi / GTX Ltd*

XP Ltd*

Effective **March 10th, 1998**

Subject to review from time to time, without notice or delay.

® * Trademarks of Bombardier Inc. and/or affiliates.
Litho'd in Canada

FLAT RATE TIME SCHEDULE

SEA-DOO®
PERSONAL WATERCRAFT

1998

VOLUME 1

SPX*

GS*

GSX Ltd*

GTS* / GTi* / GTX / GTX rfi / GTX Ltd*

XP Ltd*

Effective **March 10th, 1998**

Subject to review from time to time, without notice or delay.

® * Trademarks of Bombardier Inc. and/or affiliates.
Litho'd in Canada

SEA-DOO PERSONAL WATERCRAFT 1998

MODEL NUMBER	VEHICLE	ENGINE TYPE
5665 / 5667	XP ltd	947
5838 / 5839	SPX	787
5626 / 5844	GS	717
5629 / 5845	GSX ltd	947
5836 / 5841	GTI	717
5666 / 5843	GTX rfi	787
5819	GTS	717
5837 / 5842	GTX ltd	947

INTRODUCTION

This publication governs all warranty labor allowances for 1997 Bombardier Sea-Doo watercraft.

1. HOW DOES IT WORK

The flat rate time is the maximum time allowed for a repair involving any given part. **FLAT RATE TIME IS NOT CUMULATIVE.** You must use the flat rate time given for the longest lasting operation. For example, if you had to open the crankcase to change a piston, you must use the flat rate time applicable to the crankcase.

NOTE: The flat rate time schedule was prepared by skilled mechanics using the hand tool usually found in workshops and tools/ equipment recommended for a servicing dealer (actual time may be reduced in some instances when complimented with power tools).

2. COMPILATION

The flat rate time schedule has been established from the actual time to perform the repair plus (+) 30% correction factor up to 3.0 hours and (+) 15% over 3.0 hour times for:

boat handling
diagnosis
cleaning
obtaining the parts
special compensation (rust)
test

We welcome suggestions for changes, please use attached form.

3. HOW TO USE IT

Refer to the section you need.

JOB CODE (example)

Job Code: 10 99

10 = SYSTEM NUMBER (example: 10 ELECTRICAL)

99 = JOB CODE REFERENCE NUMBER

SYSTEM NUMBER

- 01 Engine
- 02 Carburetor
- 03 Ignition
- 04 Electric Starter
- 05 Propulsion
- 06 Not used
- 07 Steering/Controls
- 08 Not used
- 09 Body
- 10 Electrical

3.1 Locate part or series of parts replaced.

3.2 Insert the appropriate JOB CODE on the first valid line of the claim.

NOTE: Unless otherwise specified, dismantling order is: top to bottom, exterior to interior, front to rear.

All fractions of hours are in tenths:

0.1 = 6 minutes

0.2 = 12 minutes, and so on

4. JOB REQUIREMENTS

All the flat rate times mentioned in the following pages include the required operations such as: engine timing (rotary valve and ignition), connecting rod(s) alignment, cylinder head(s) torque or use of parallel bar, use of Bombardier tester (or equivalent), piston clearance/ring end gap measurement, crankshaft to crankcase measurement, cylinder honing.

5. SUGGESTION (FORM REQUEST)

Flat Rate Time - Suggestion for Change

RETURN OF WARRANTY PARTS

List of parts to be returned to your distributor.

P/N - FIBERGLASS REPAIRS

List of P/N Required for Fiberglass Repairs.

01 ENGINE

1998 FLAT RATE TIME SCHEDULE

SEA-DOO

ALWAYS USE THE LONGEST FLAT RATE TIME
APPLICABLE TO THE REPAIR PERFORMED.

JOB CODE	JOB DESCRIPTION	5838	5626	5629	5819	5836	5666	5837	5665
		5839	5844	5845 5625		5841	5843	5842	5667
		SPX	GS	GSX Ltd	GTS	GTi	GTX Rfi	GTX Ltd	XP Ltd
01 00	NO LABOR INVOLVED								
01 01	MUFFLER, HOSE, STRAP, RUBBER STRIP	0.3	0.3	0.3	0.3	0.7	0.3	0.3	0.3
01 03	TUNED PIPE, O-RING OR GASKET, FITTING	0.8	0.8	0.9	0.8	0.8	0.6	0.9	0.9
01 04	TUNED PIPE CONE AND/OR STRIP AND/OR CLAIM	0.8	0.3	0.8	0.3	0.8	0.5	0.8	0.8
01 05	EXHAUST MANIFOLD AND/OR BOLT(S)	1.2	1.0	1.6	1.0	1.3	1.3	1.6	1.6
01 06	EXHAUST MANIFOLD STUDS FOR TUNED PIPE	1.4	1.0	1.7	1.0	1.4	1.4	1.7	1.7
01 07	EXHAUST MANIFOLD ANGULAR TUBE		0.8		0.8				
01 08	* ENGINE ASS'Y REMOVAL AND INSTALLATION	4.5	4.0	4.8	4.0	4.5	4.5	4.8	4.8
01 09	ROTARY VALVE COVER AND O-RING	2.2	2.2		2.2	1.0	2.2		2.2
	** ROTARY VALVE TIMING	1.4	1.4		1.4	1.4			
01 11	OIL INLET ANGULAR TUBE	1.4	1.0		1.0	0.3	1.4		1.4
01 12	THERMOSENSOR (1 OR 2)	0.3	0.3	0.3	0.3	0.3	0.3	0.3	0.3
01 13	CYLINDER HEAD COVER	0.3	0.3		0.3	0.3	0.3		0.3
01 14	CYLINDER HEAD AND/OR GASKET	0.5	0.5	0.8	0.5	0.5	0.5	0.8	0.8
01 15	CYLINDER AND/OR CYLINDER BASE GASKET	2.6	2.6	5.6	2.6	2.6	2.6	5.6	2.6
01 16	PISTON,PISTON RINGS,PIN MAG SIDE	3.7	3.5	5.8	3.5	3.7	3.7	5.8	5.8
01 17	PISTON,PISTON RINGS,PIN, PTO SIDE	3.9	3.5	5.8	3.5	3.9	5.5	5.5	5.5
01 18	PISTONS,PISTONS RINGS,PINS,BOTH SIDES	4.3	4.0	6.0	4.0	4.4	5.7	6.0	6.0
01 20	CRANKCASE RESEAL OR GASKET SET	6.2	5.7	6.7	5.7	6.2	6.4	6.7	6.7
01 21	CRANKSHAFT AND/OR BEARING *	6.8	6.2	6.8	6.2	6.8	6.5	6.8	6.8
01 22	ROTARY VALVE SHAFT, ANY/OR ALL PARTS	6.6	6.0		6.0	6.0			
01 23	CRANKCASE REPLACEMENT	6.8	6.4	6.8	6.4	7.4	6.5	6.8	6.8
01 24	ENGINE CRADLE	1.9	1.7	2.2	1.7	1.9	1.9	2.2	2.2
01 25	ENGINE BASE STUDS ANY/OR ALL STUDS		3.1		3.1				
01 26	CRADLE RUBBER MOUNTS 1 OR 2	1.8	1.9	2.3	1.9	2.0	2.0	2.3	2.3
01 27	CRADLE RUBBER MOUNTS 3 OR 4	2.5	2.2	2.8	2.2	2.5	2.5	2.8	2.8
01 28	HOSE FRM COOLANT OUTLET TO EXH	0.4	0.3	0.3	0.3	0.3	0.3	0.3	0.3
01 30	FITTING,HOSE FOR BLEED SYSTEM	0.3	0.3	0.3	0.3	0.3	0.3	0.3	0.3
01 31	HOSE FRM TEE TO TUNED PIPE	0.3	0.3		0.3	0.3			
01 32	HOSE FRM TEE TO WATER INJ. FITTING	0.3	0.3		0.3	0.3			
01 33	T FITTING ,INLET HOSE	0.3							
01 34	HOSE FOR ENGINE DRAIN.(MANIF. TO EXHA.)	0.6	0.3	0.5	0.3	0.3	0.5	0.5	0.5
01 35	HOSE FRM MUFFLER TO EXHAUST OUTLET	0.3	0.3	0.5	0.3	0.6	0.3	0.5	0.3
01 36	EXHAUST OUTLET	0.6	0.8	0.7	0.8	1.3	0.7	0.7	0.7
01 37	* SHORT BLOCK	5.5	4.9	6.3	4.9	6.0	6.0	6.3	6.3
01 38	FLUSH FITTING (1 OR 2)	0.3	0.3		0.3	0.3			

* REQUIRES PRIOR AUTHORIZATION BY DISTRIBUTOR.

** INDICATE LABOUR TIME ON LINE "LABOUR ONLY" OF CLAIM.

*** INDICATE \$\$\$ AMOUNT ON "SUB-CONTRACTED LABOUR" OF CLAIM.

01 ENGINE

1998 FLAT RATE TIME SCHEDULE

SEA-DOO

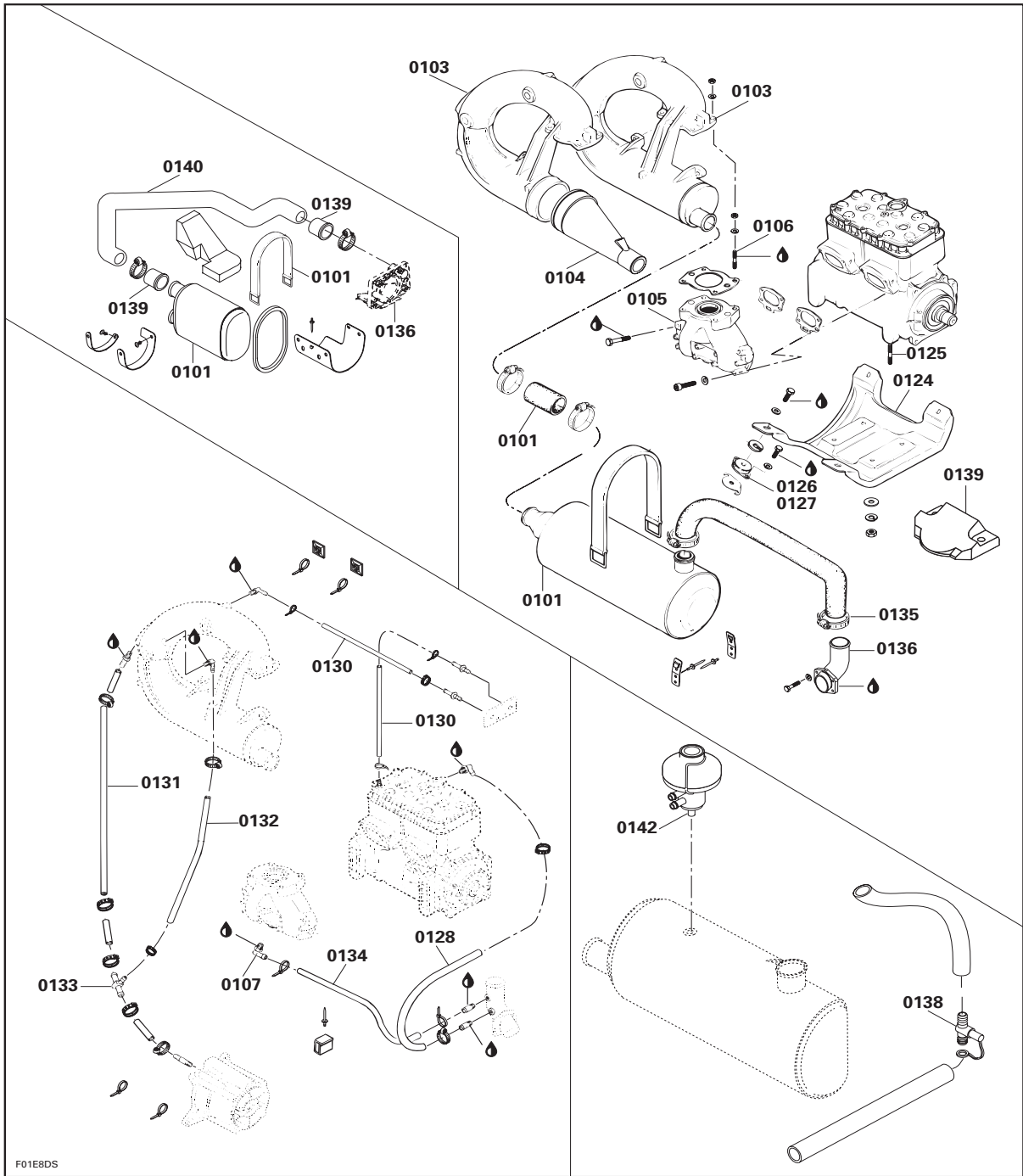
ALWAYS USE THE *LONGEST* FLAT RATE TIME
 APPLICABLE TO THE REPAIR PERFORMED.

JOB CODE	JOB DESCRIPTION	5838	5626	5629	5819	5836	5666	5837	5665
		5839	5844	5845 5625		5841	5843	5842	5667
		SPX	GS	GSX Ltd	GTS	GTi	GTX Rfi	GTX Ltd	XP Ltd
01 41	EXHAUST VALVE, 1 OR 2	0.7		0.7		0.7	0.7	0.7	0.7
01 42	PRESSURE REGULATOR ASS'Y	0.4		0.4		0.4	0.4	0.4	0.4
01 43	SHAFT BALANCE ASS'Y	6.8		6.8		6.8	6.5	6.8	6.8
01 44	HOSE, FRMHEAD PIPE TO CYL. HEAD	0.3		0.5		0.3	0.3	0.5	0.5
01 45	SUPPORT PIPE (PIPE CONE)			0.5		0.5	0.5	0.5	0.5
01 46	SUPPORT PIPE (HEAD PIPE ASSY)	0.3		0.6		0.6	0.6	0.6	0.6
01 47	REED VALVE			1.3			1.3	1.3	1.3
01 48	COVER MUFFLER (LOWER)						0.5		
01 49	COVER MUFFLER (UPPER)						0.5		
01 50	RESONNATOR LH						0.4		
01 51	RESONNATOR MUFFLER			4.0		1.3	1.3	3.0	
01 52	RESONNATOR RH						0.3		
01 53	MUFFLER SUPPORT						0.7		

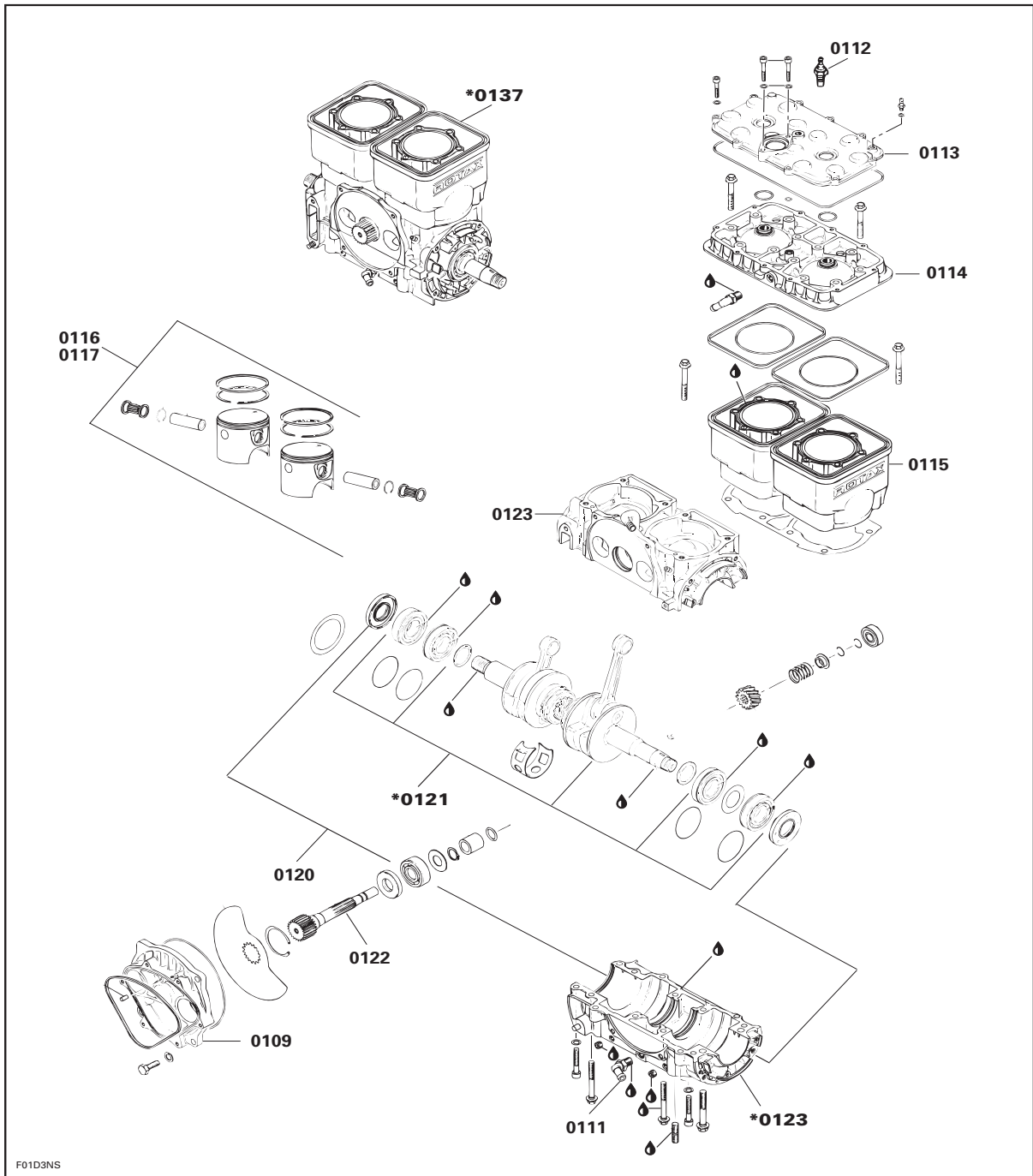
* REQUIRES PRIOR AUTHORIZATION BY DISTRIBUTOR.

** INDICATE LABOUR TIME ON LINE "LABOUR ONLY" OF CLAIM.

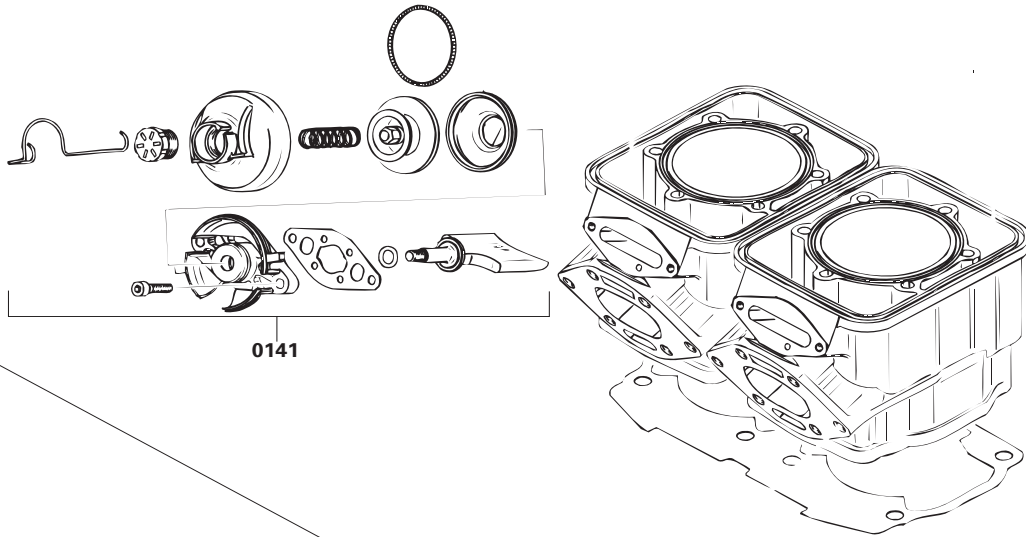
*** INDICATE \$\$\$ AMOUNT ON "SUB-CONTRACTED LABOUR" OF CLAIM.



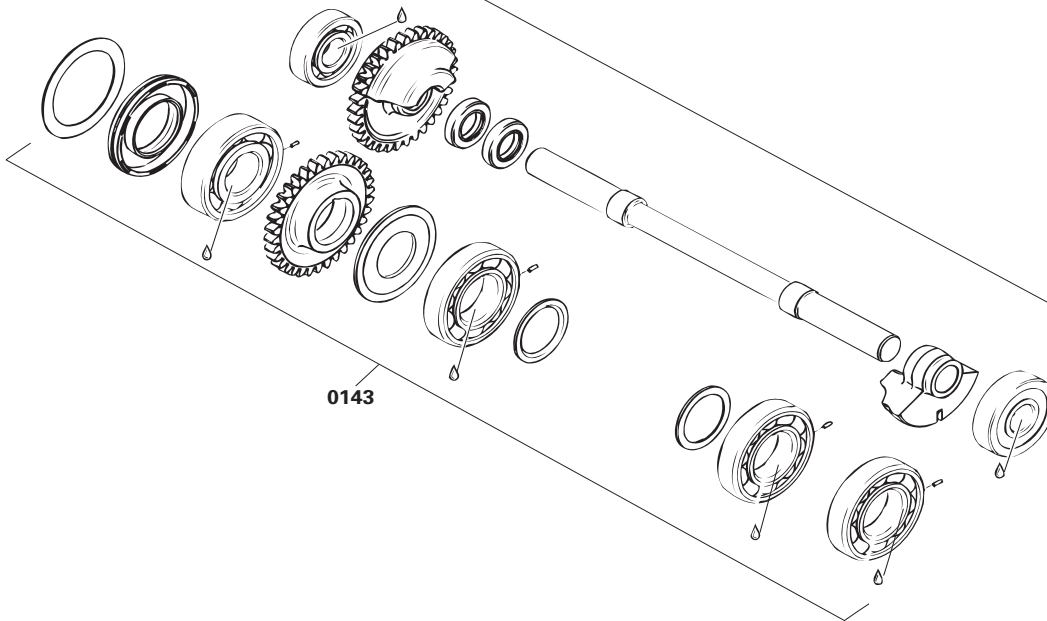
F01E8DS



F01D3NS

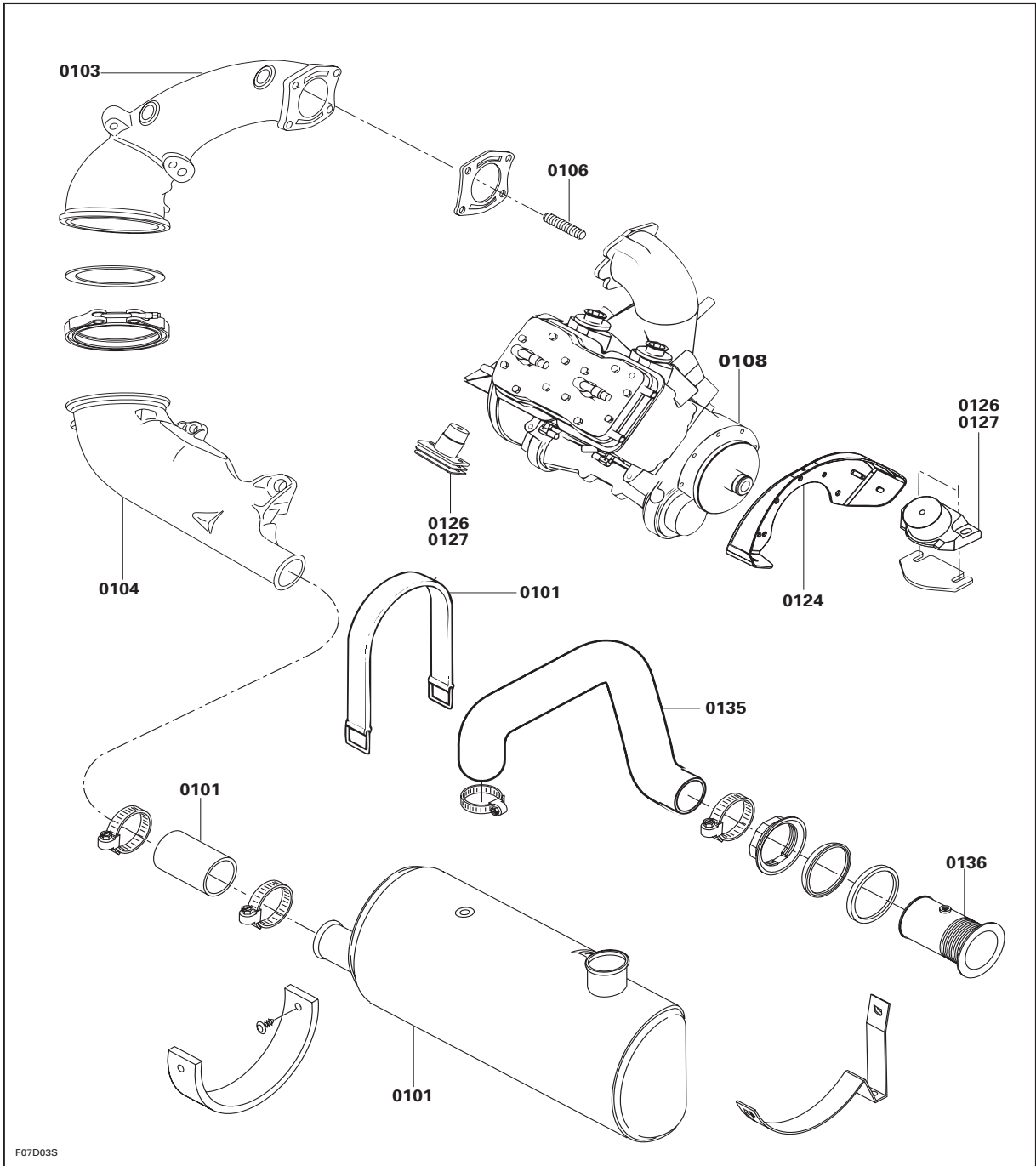


0141

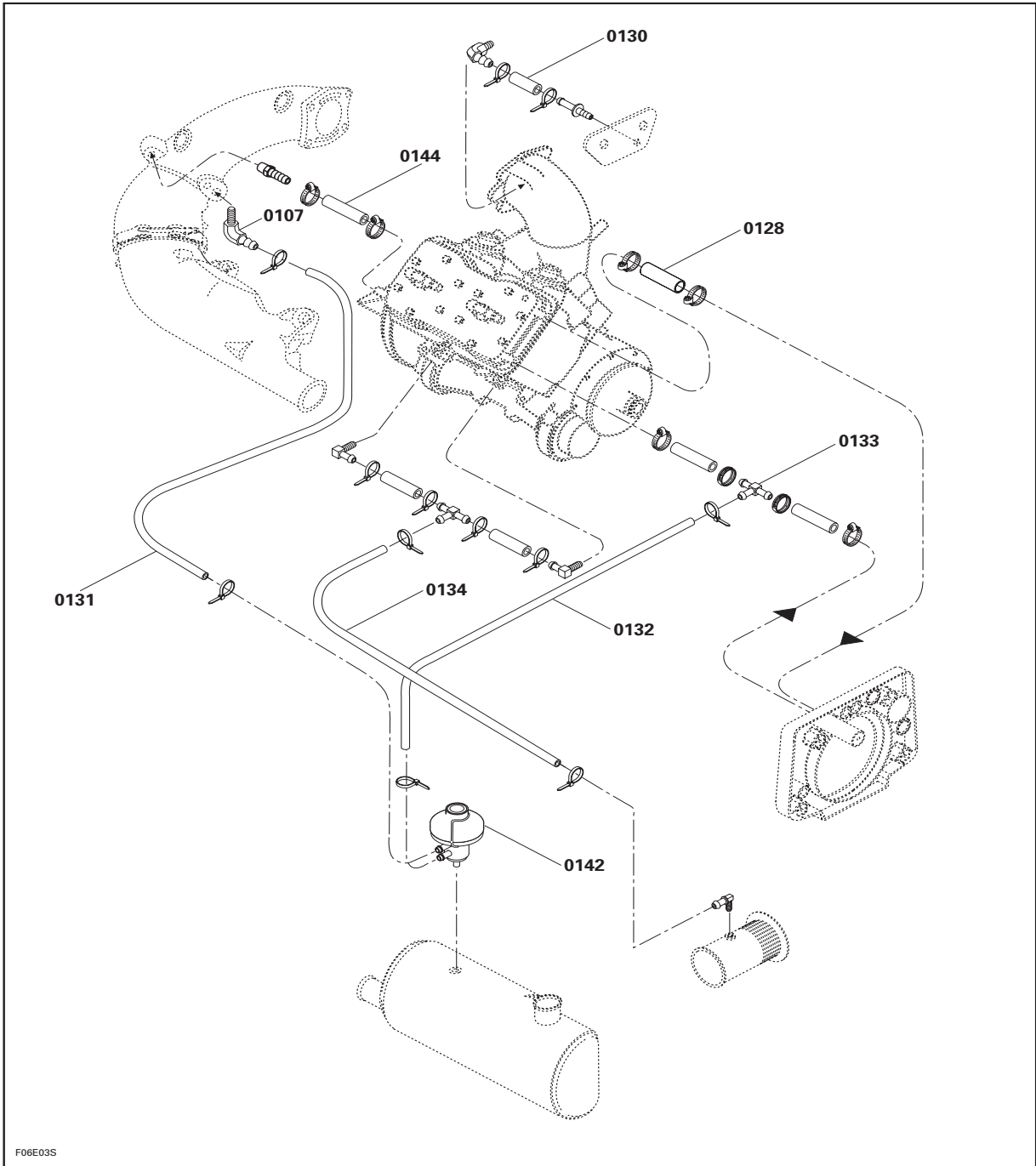


0143

F01D8ES



F07D03S



F06E03S

02 CARBURETOR

1998 FLAT RATE TIME SCHEDULE

SEA-DOO

**ALWAYS USE THE LONGEST FLAT RATE TIME
APPLICABLE TO THE REPAIR PERFORMED.**

JOB CODE	JOB DESCRIPTION	5838	5626	5629	5819	5836	5666	5837	5665
		5839	5844	5845 5625		5841	5843	5842	5667
		SPX	GS	GSX Ltd	GTS	GTi	GTX Rfi	GTX Ltd	XP Ltd
02 00	NO LABOR INVLOVED								
02 01	REMOVAL AND/OR INST. OF AIR SILENCER	0.4	0.4	0.4	0.4	0.4	0.4	0.4	0.4
02 02	FLAME ARRESTER COVER, FLAME ARRESTER	0.4	0.3		0.3	0.3	0.3		
02 03	FLAME ARRESTER ADAPTOR	0.5	0.4		0.4	0.4	0.4		
02 04	FLAME ARRESTER BASE	0.4	0.5		0.5	0.5	0.5		
02 05	THROTTLE CABLE (1)	1.0	1.0	1.5	0.5	1.0	1.0	1.5	1.5
02 06	CHOKE CABLE	1.0	1.0	1.5	0.4	1.0		1.5	1.5
02 07	CARB. MAIN JET 1	1.4	1.4	1.5	1.4	1.4		1.5	1.5
02 08	CARB. MAIN JET 2	1.6	1.6	1.6	1.6	1.6		1.6	1.6
02 09	THROTTLE CABLE LEVER ANY/OR ALL PARTS 1	1.4	1.4	1.5	1.4	1.4		1.5	1.5
02 10	THROTTLE CABLE LEVER ANY/OR ALL PARTS 2	1.6	1.6	1.3	1.6	1.6		1.6	1.6
02 11	CARBURETOR LINKAGE	0.3	0.3	0.5	0.3	0.3		0.5	0.5
02 12	CARBURETOR ASS'Y 1	1.0	1.0	1.3	1.0	1.0		1.3	1.3
02 13	CARBURETOR ASS'Y 2	1.2	1.2	1.5	1.2	1.2		1.5	1.5
02 14	THROTTLE SHAFT,BUSHING	1.8	1.8	1.6	1.8	1.8		1.6	1.6
02 16	CHOKE SHAFT,SPRING 1	1.8	1.8	1.6	1.8	1.8		1.6	1.6
02 17	CHOKE SHAFTS,SPRINGS 2	1.9	1.9	1.9	1.9	1.9		1.9	1.9
02 18	GASKET AND DIAPHRAGM SET 1	1.2	1.2	1.5	1.2	1.2		1.5	1.5
02 19	GASKET AND DIAPHRAGM SET 2	1.4	1.4	1.4	1.4	1.4		1.4	1.4
02 20	NEEDLE VALVE,SEAT,WELCH PLUG 1	1.4	1.4	1.4	1.4	1.4		1.4	1.4
02 21	NEEDLE VALVES,SEATS,WELCH PLUG	1.6	1.6	1.6	1.6	1.6		1.6	1.6
	** CARBURETOR CLEANING AND REBUILDING 1	1.4	1.0	1.5	1.0	1.0		1.5	1.5
	** CARBURETORS CLEANING AND REBUILDING 2	1.6	1.0	1.5				1.5	1.5
02 24	FUEL PUMP	1.2	1.2	1.2	1.2	1.2		1.2	1.2
02 25	FUEL FILTER	0.3	0.3	0.3	0.3	0.3		0.3	0.3
02 26	FUEL TANK CAP AND/OR SEAL	0.3	0.3	0.3	0.3	0.3	0.3	0.3	0.3
02 27	FUEL TANK BODY ADP.,CHAIN SEAL	0.4	0.3	0.4	0.3	0.3	0.4	0.4	0.4
02 28	INNER FILLER NECK HOSE	0.6	0.5	0.5	0.5	0.5	0.5	0.5	0.6
02 29	FUEL TANK STRAPS 2	0.3	0.3	0.5	0.3	0.3	0.3	0.3	
02 31	FUEL TANK	1.3	4.0	4.5	1.2	1.2	0.9	0.9	5.5
02 34	FUEL TANK VALVE (1)	0.6	0.6	0.6	0.6	0.6	0.6	0.6	0.6
02 35	VENT CHECK VALVE (EACH)	0.3	0.3	0.3	0.3	0.3	0.3	0.3	0.3
02 36	FUEL TANK HOSE(FRM BODY ADP. T	0.6	0.3	0.3	0.3	0.3	0.3	0.3	0.3
02 37	GROMMET,HOSE(FUEL AND VENT LIN	0.3	0.3	0.3	0.3	0.3	0.3	0.3	0.3
02 38	HOSE(FRM TANK ADP. TO FUEL VALVE)	0.3	0.3	0.3	0.3	0.3		0.3	

* REQUIRES PRIOR AUTHORIZATION BY DISTRIBUTOR.

** INDICATE LABOUR TIME ON LINE "LABOUR ONLY" OF CLAIM.

*** INDICATE \$\$\$ AMOUNT ON "SUB-CONTRACTED LABOUR" OF CLAIM.

02 CARBURETOR

1998 FLAT RATE TIME SCHEDULE

SEA-DOO

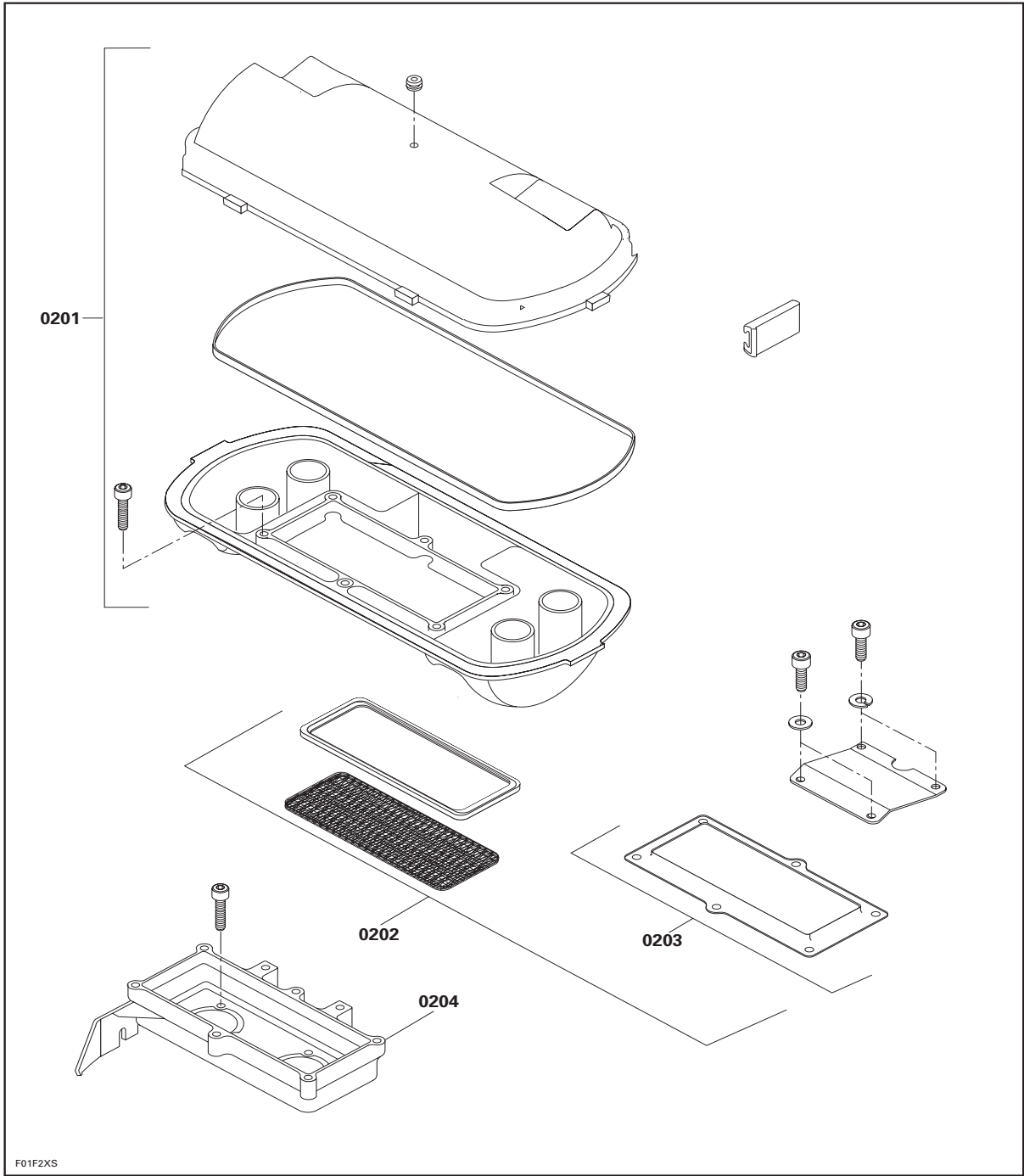
ALWAYS USE THE *LONGEST* FLAT RATE TIME
APPLICABLE TO THE REPAIR PERFORMED.

JOB CODE	JOB DESCRIPTION	5838	5626	5629	5819	5836	5666	5837	5665
		5839	5844	5845 5625		5841	5843	5842	5667
		SPX	GS	GSX Ltd	GTS	GTi	GTX Rfi	GTX Ltd	XP Ltd
02 39	HOSE(FRM FUEL VALVE TO FUEL FILTER)	0.3	0.3	0.3	0.3	0.3		0.3	0.4
02 40	HOSE(FRM FUEL FILTER TO FUEL PUMP)	0.3	0.3	0.4	0.3	0.3		0.3	0.4
02 41	HOSE (FRM FUEL PUMP TO ENGINE)	0.3	0.3	0.3	0.3	0.3	0.3	0.3	0.4
02 43	HOSE(FRM PTO CARB.TO MAG. CARB.)	0.4		0.5				0.3	0.4
02 44	HOSE,CHECK VALVE(CARB.RETURN LINE)	0.4	0.3	0.4	0.3	0.3		0.4	0.4
02 45	INJ. OIL RES. ADP.,HOSE,O-RING (FOR CAP)	0.4	0.3	0.4	0.3	0.3	0.4	0.4	0.4
02 46	INJ. OIL RES. STRAP	0.3	0.3	0.3	0.3	0.3	0.3	0.3	0.3
02 47	INJ. AND ROTARY OIL RESERVOIR	0.9	0.8	0.8	0.8	0.8	0.8	0.6	0.5
02 48	OIL INJ. PUMP	0.8	2.4	0.8	2.4	2.4	2.2	2.2	0.8
02 49	OIL INJ. PUMP FIT.,VALVE COVER	1.6	1.4	1.6	1.4	1.4	1.6	1.6	1.6
02 50	HOSE,GROMMET(FRM R.V.OIL OUT.TO OIL RES.)	0.5	0.6	0.6	0.6	0.6	0.6	0.6	0.6
02 51	HOSE,GROMMET(FRM OIL RESV. TO R.V. OIL IN)	0.7	0.7	0.6	0.7	0.7	0.7	0.7	0.7
02 52	HOSE,FILTER GROMMET(FRM OIL RESV. TO OIL)	1.0	0.6	0.6	0.6	0.6	0.7	0.6	0.6
02 55	CABLE ASS'Y OIL PUMP (1)	1.0	1.0	1.0	1.0	1.0	1.0	1.0	1
02 57	"Y" FITTING ON CARBURETOR	0.3							0.4
02 61	MUFFLER ADAPTOR			1.3				1.3	1.3
02 62	THROTTLE SENSOR						0.3		
02 63	THROTTLE BODY						0.5		
02 64	INJECTOR						0.5		
02 65	RUBBER PAD						0.6		
02 66	FUEL PUMP						0.7		
02 67	LOWER FILTER						0.7		
02 68	FUEL REGULATOR						0.7		

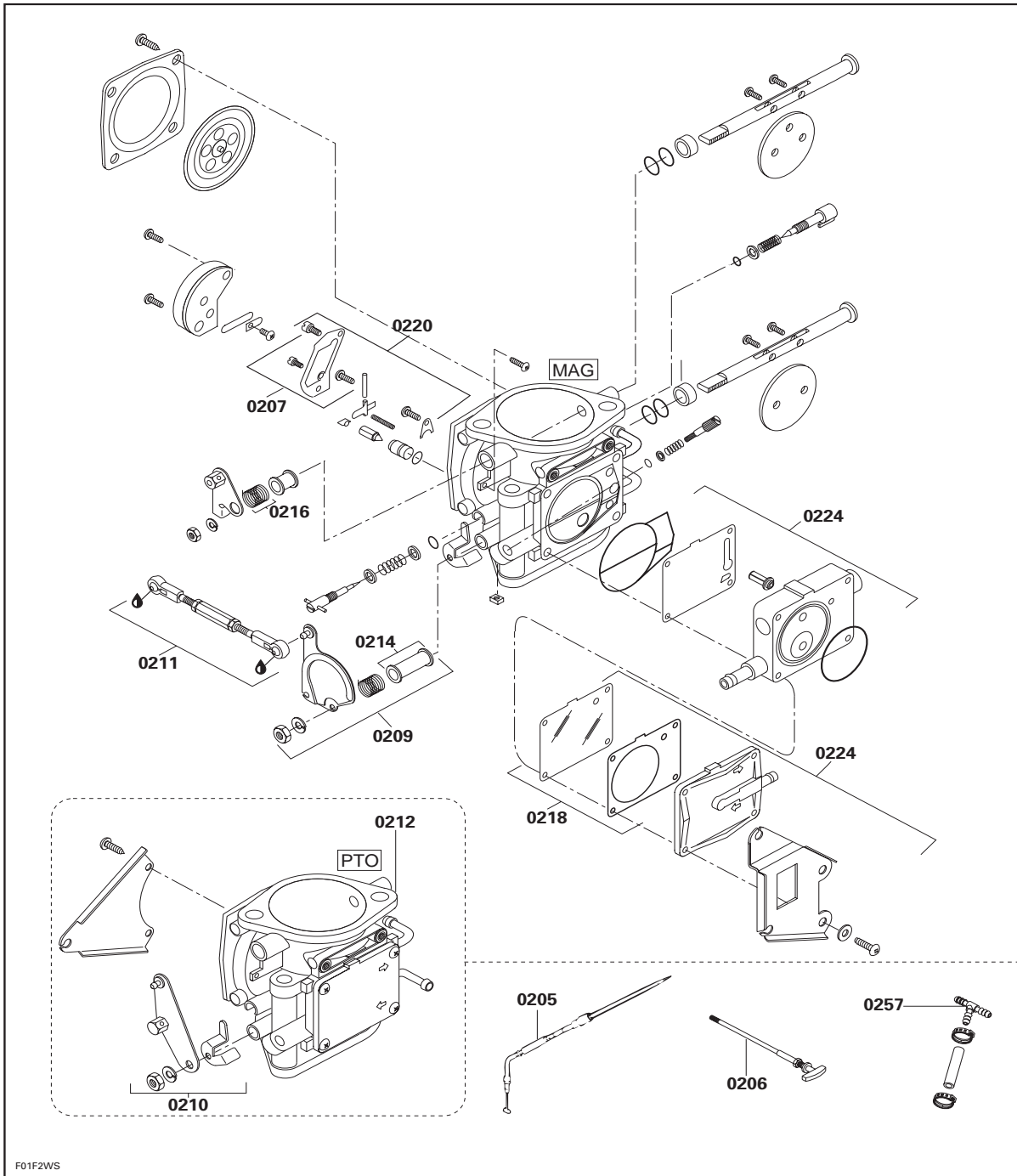
* REQUIRES PRIOR AUTHORIZATION BY DISTRIBUTOR.

** INDICATE LABOUR TIME ON LINE "LABOUR ONLY" OF CLAIM.

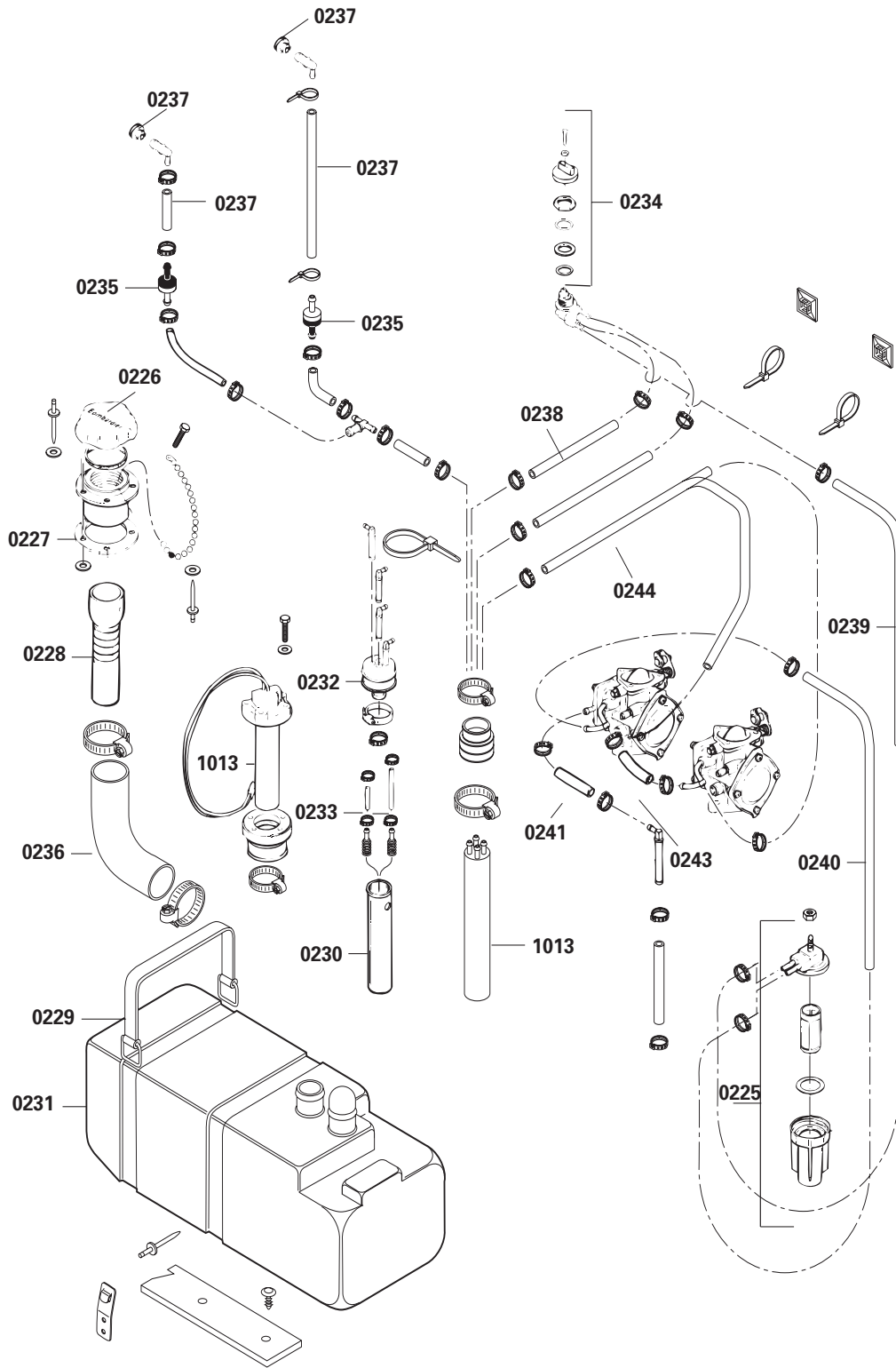
*** INDICATE \$\$\$ AMOUNT ON "SUB-CONTRACTED LABOUR" OF CLAIM.



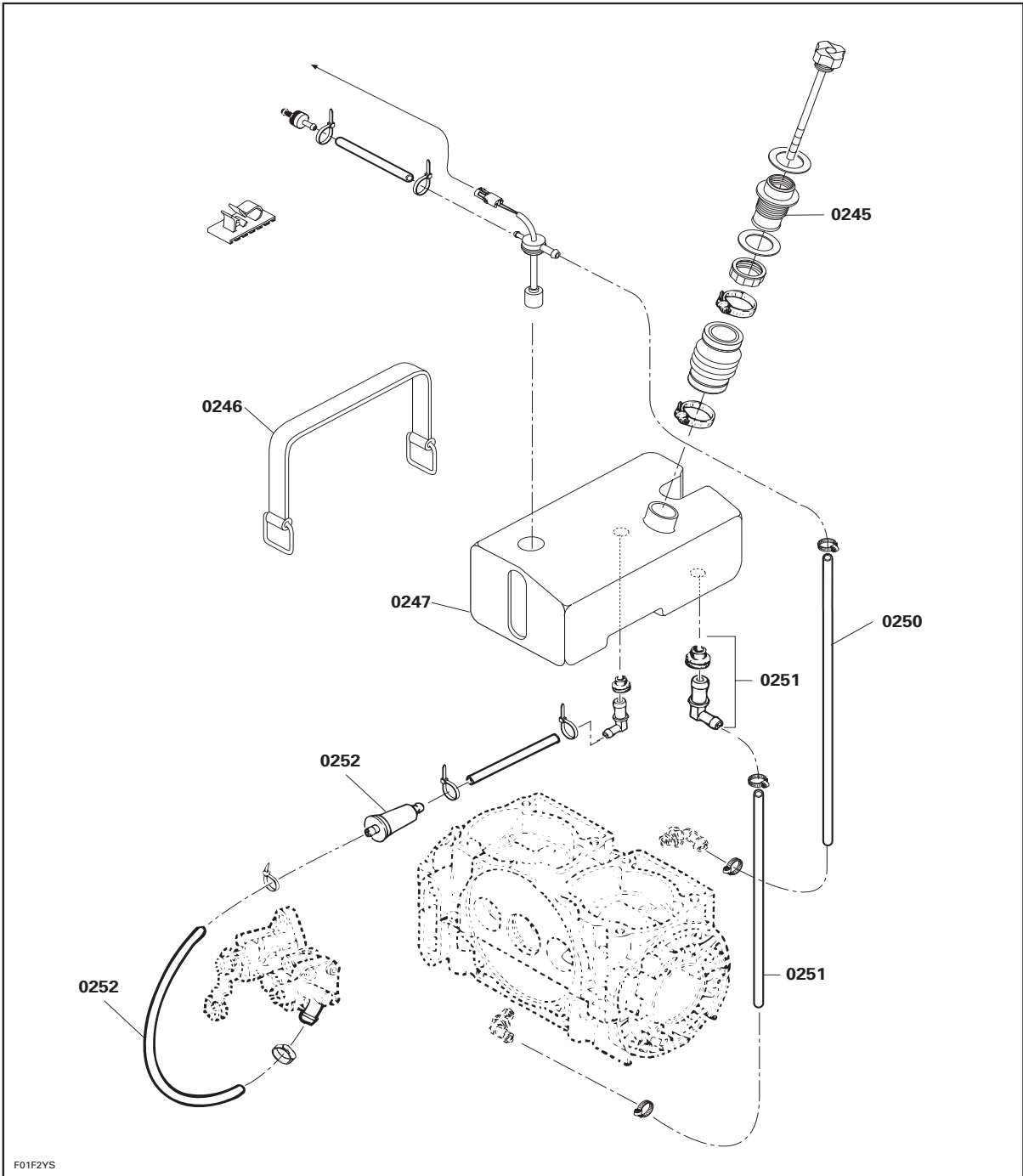
F01F2XS



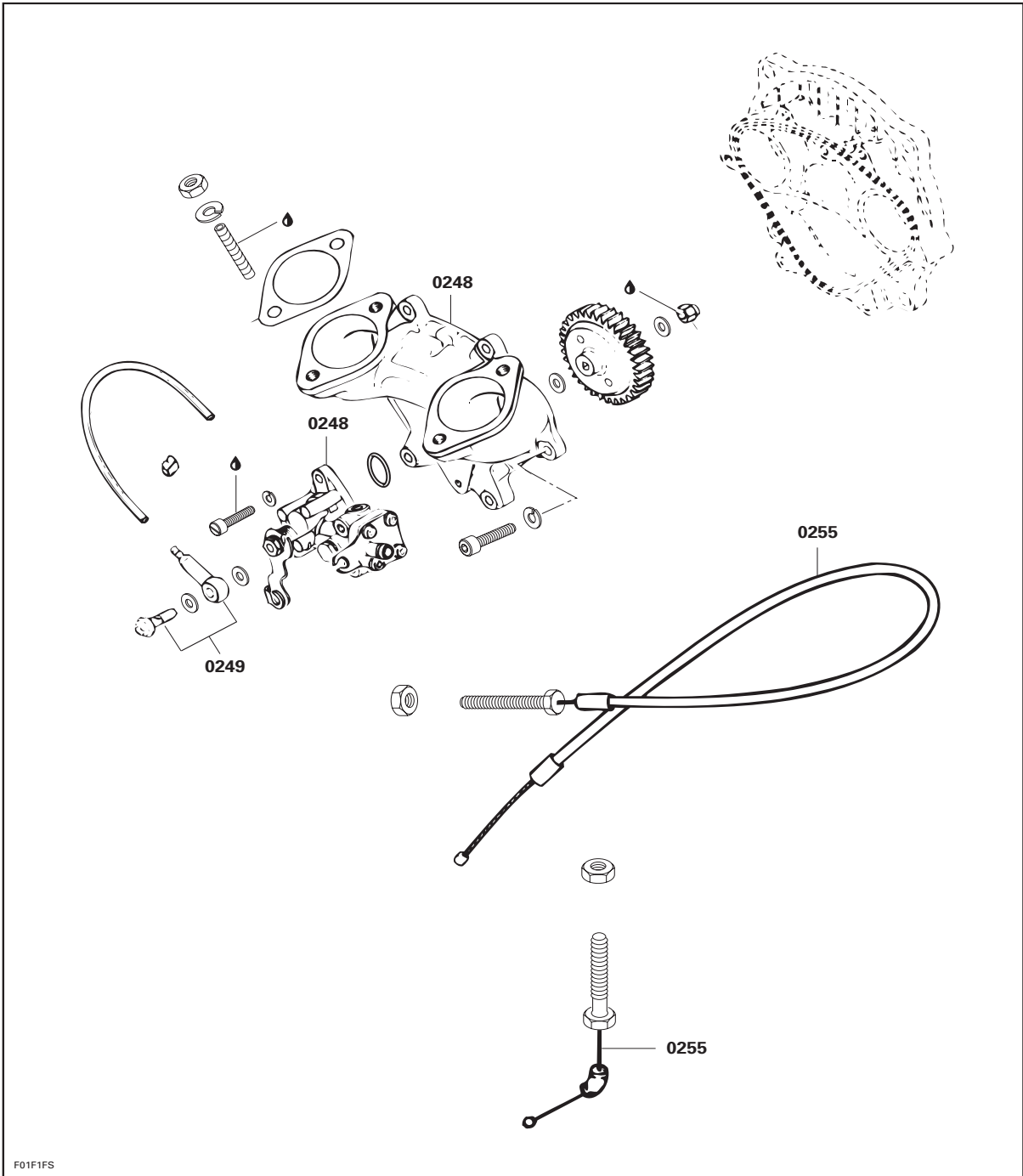
F01F2WS



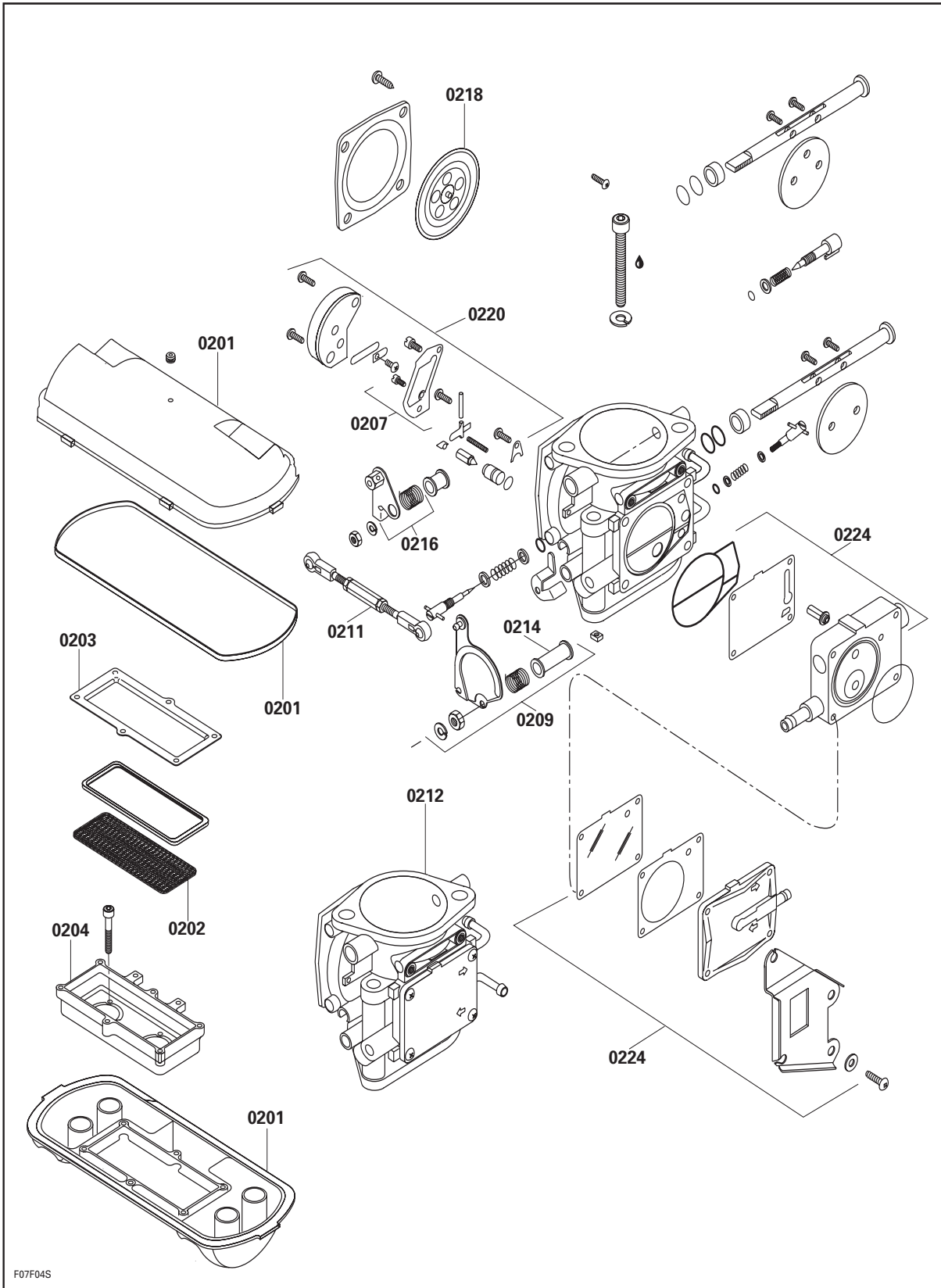
F01F2GS



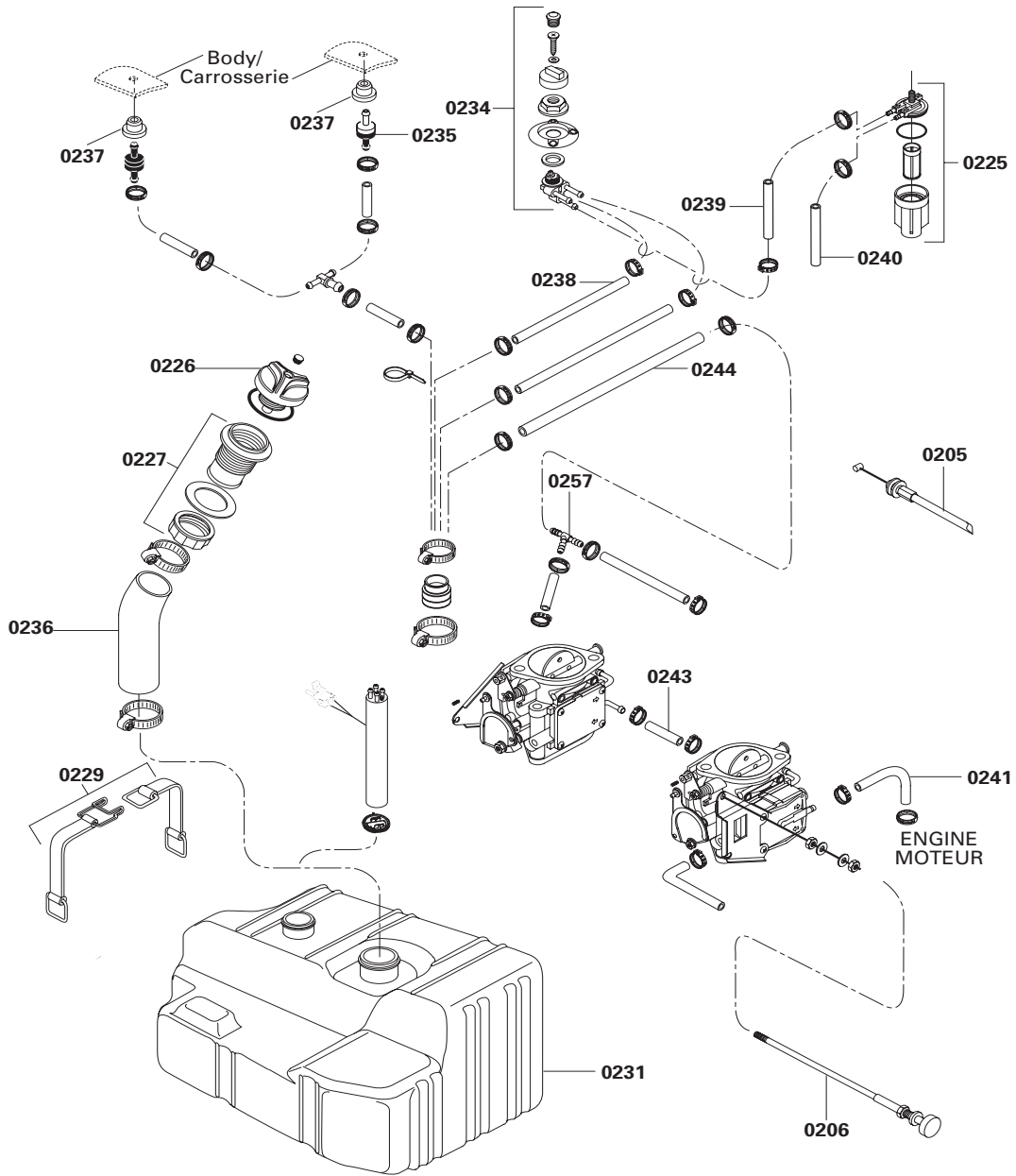
F01F2YS



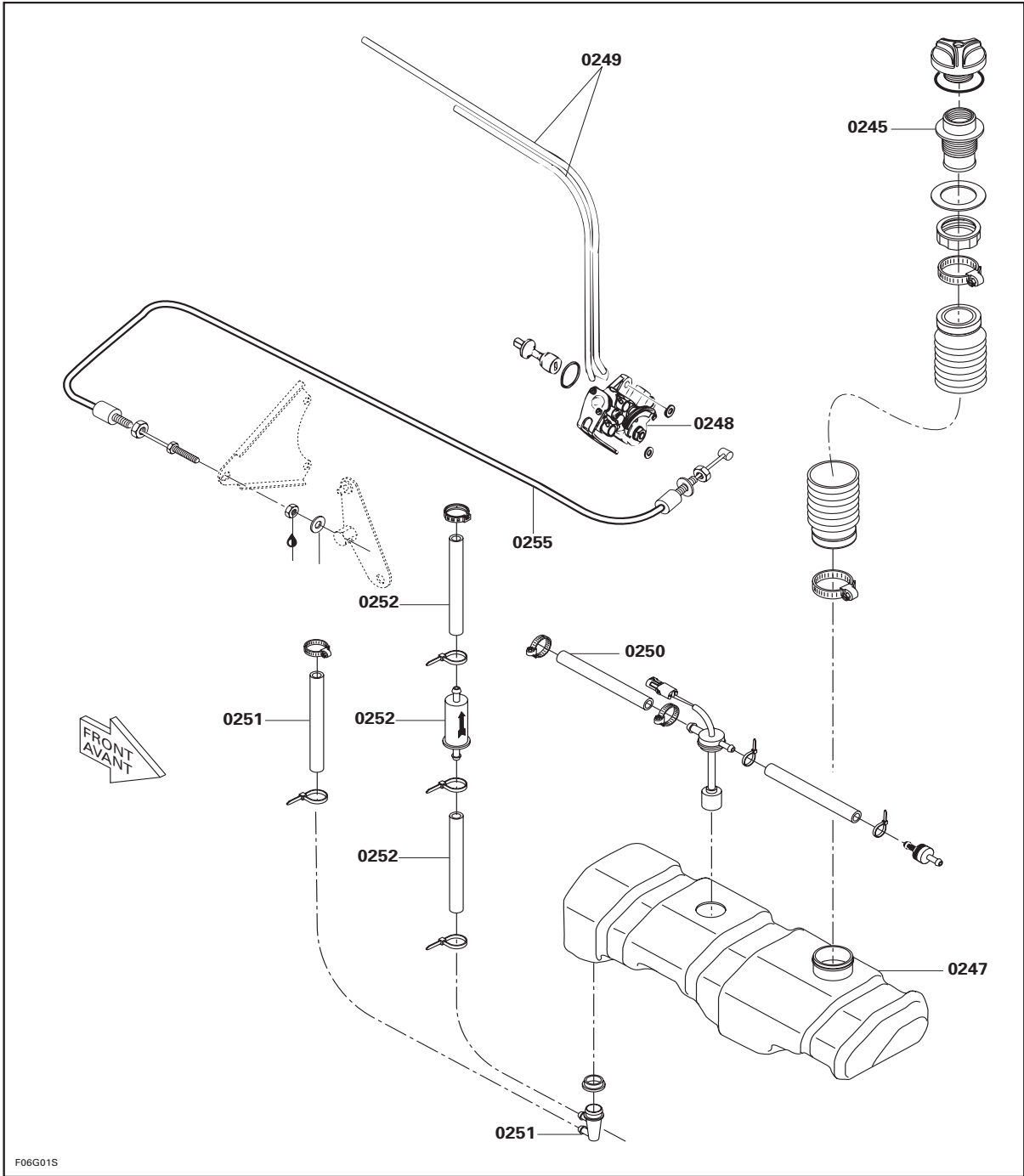
F01F1FS



F07F04S



F06F02S



03 IGNITION

1998 FLAT RATE TIME SCHEDULE

SEA-DOO

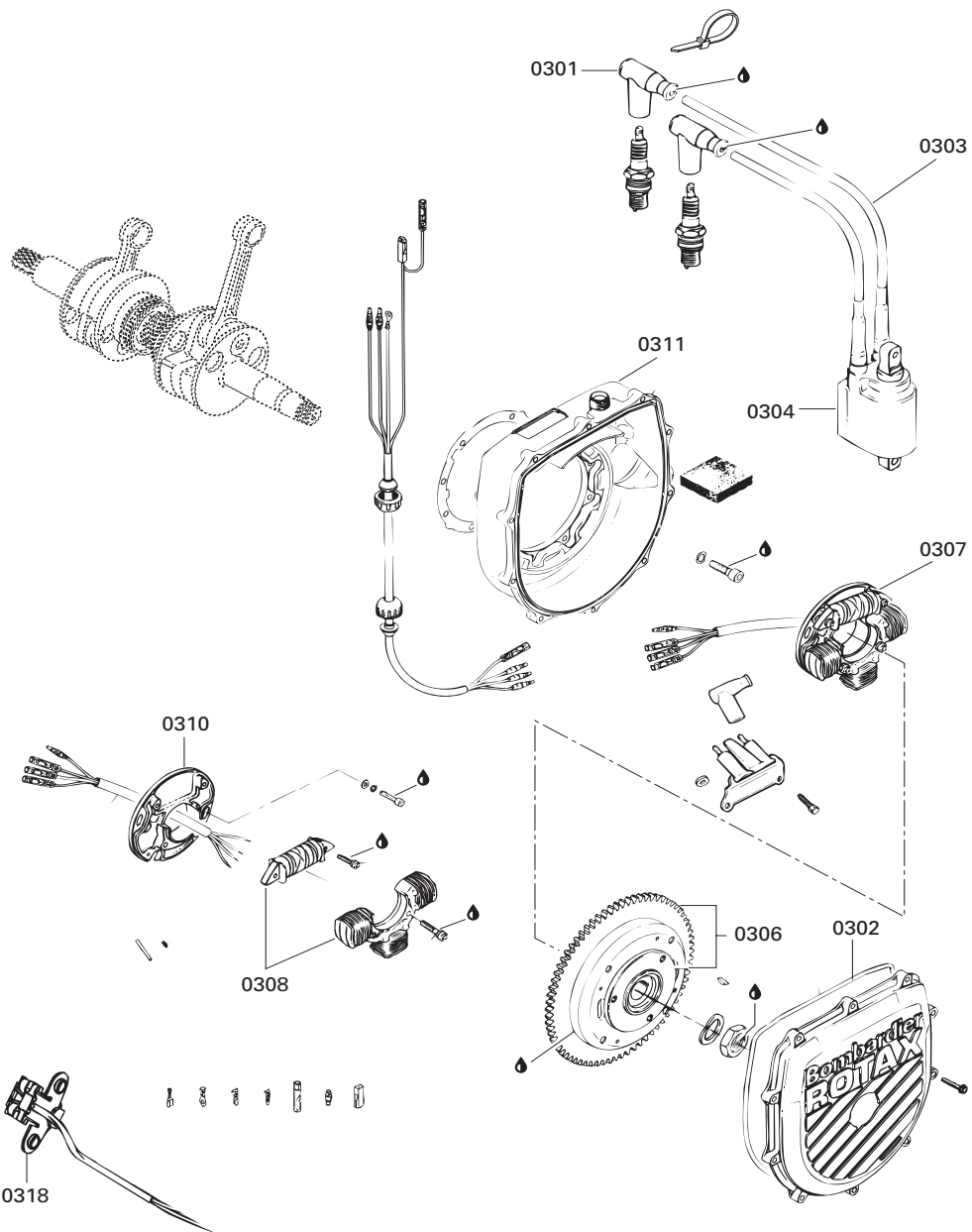
**ALWAYS USE THE LONGEST FLAT RATE TIME
APPLICABLE TO THE REPAIR PERFORMED.**

JOB CODE	JOB DESCRIPTION	5838	5626	5629	5819	5836	5666	5837	5665
		5839	5844	5845 5625		5841	5843	5842	5667
		SPX	GS	GSX Ltd	GTS	GTi	GTX Rfi	GTX Ltd	XP Ltd
03 00	NO LABOR INVOLVED								
03 01	SPARK PLUG PROTECTOR (ALL)	0.3	0.3	0.3	0.3	0.3	0.3	0.3	0.3
03 02	IGNITION COVER/O-RING	1.1	0.4	1.4	0.4	0.4	1.1	1.4	1.4
03 03	IGNITION CABLE	0.6	0.6	0.6	0.6	0.6	0.6	0.6	0.6
03 04	IGNITION COIL/MODULE	0.7	0.7	0.7	0.7	0.7	0.7	0.7	0.7
03 06	MAGNETO FLY.,WOODRUFF KEY	1.2	0.9	3.3	0.9	0.9	1.2	3.3	3.3
03 07	ARMATURE PLATE ASS'Y	1.9	1.9	4.9	1.9	1.9	1.9	4.9	4.9
03 08	BATT.CHARGING COIL/GENER.COIL	3.0	2.4	4.9	2.4	2.4	3.0	4.9	4.9
03 10	ARMATURE PLATE ALONE	3.8	3.2	5.2	3.2	3.2	3.8	5.2	5.2
03 11	IGNITION HOUSING	3.2	1.2	4.9	1.2	1.2	3.2	4.9	4.9
	** IGNITION TIMING VERIF.	0.7	0.7	0.7	0.7	0.7	0.7	0.7	0.7
	** IGNITION TIMING	1.3	1.3	1.3	1.3	1.3	1.3	1.3	1.3
03 15	M. P. E. M.	0.3	0.3	0.4	0.3	0.3	0.5	0.3	0.3
03 16	V.T.S. MODULE	0.7		0.7				0.7	0.7
03 18	PICK UP ASS'Y	2.0		3.9			2.0	2.0	2.0

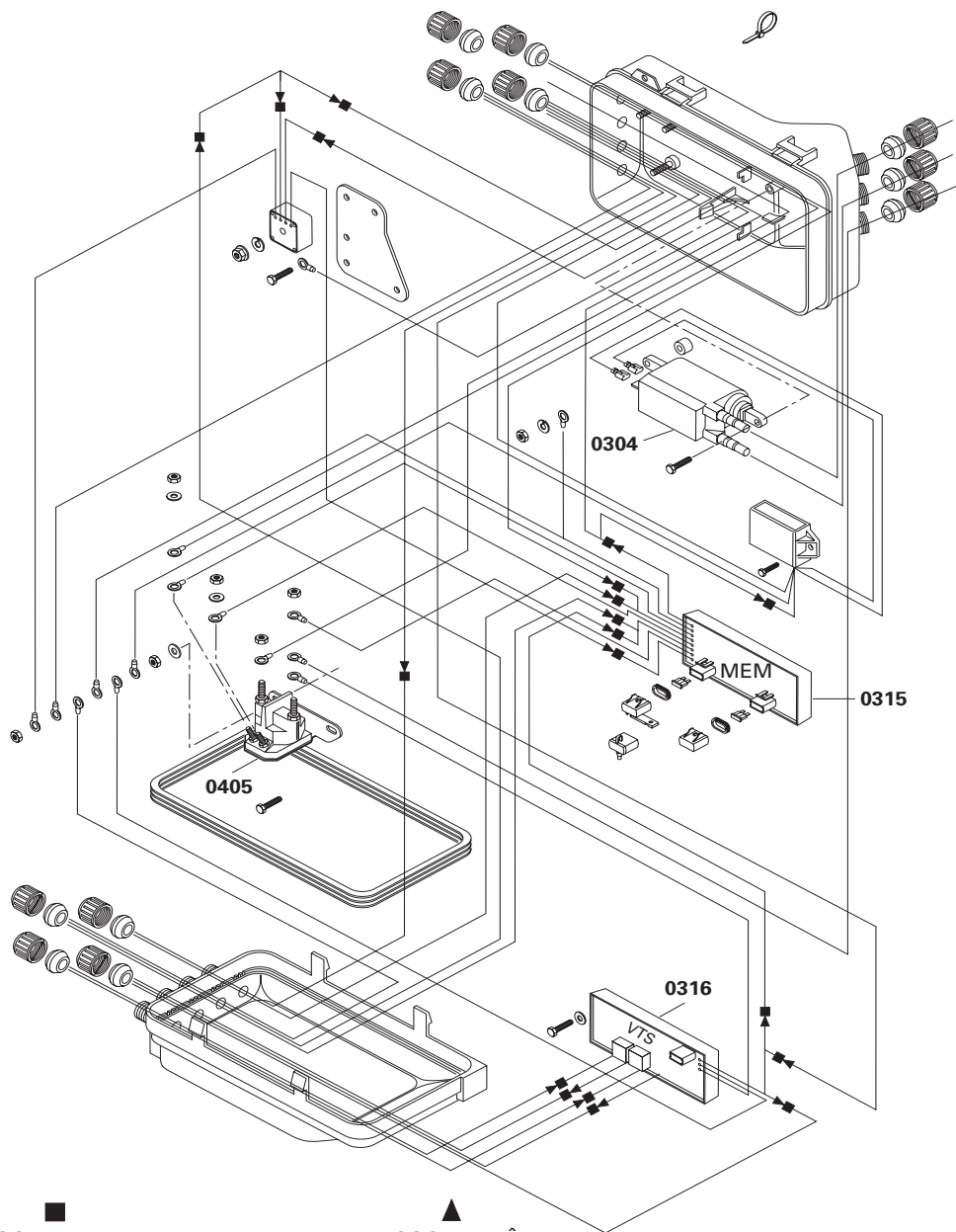
* REQUIRES PRIOR AUTHORIZATION BY DISTRIBUTOR.

** INDICATE LABOUR TIME ON LINE "LABOUR ONLY" OF CLAIM.

*** INDICATE \$\$\$ AMOUNT ON "SUB-CONTRACTED LABOUR" OF CLAIM.



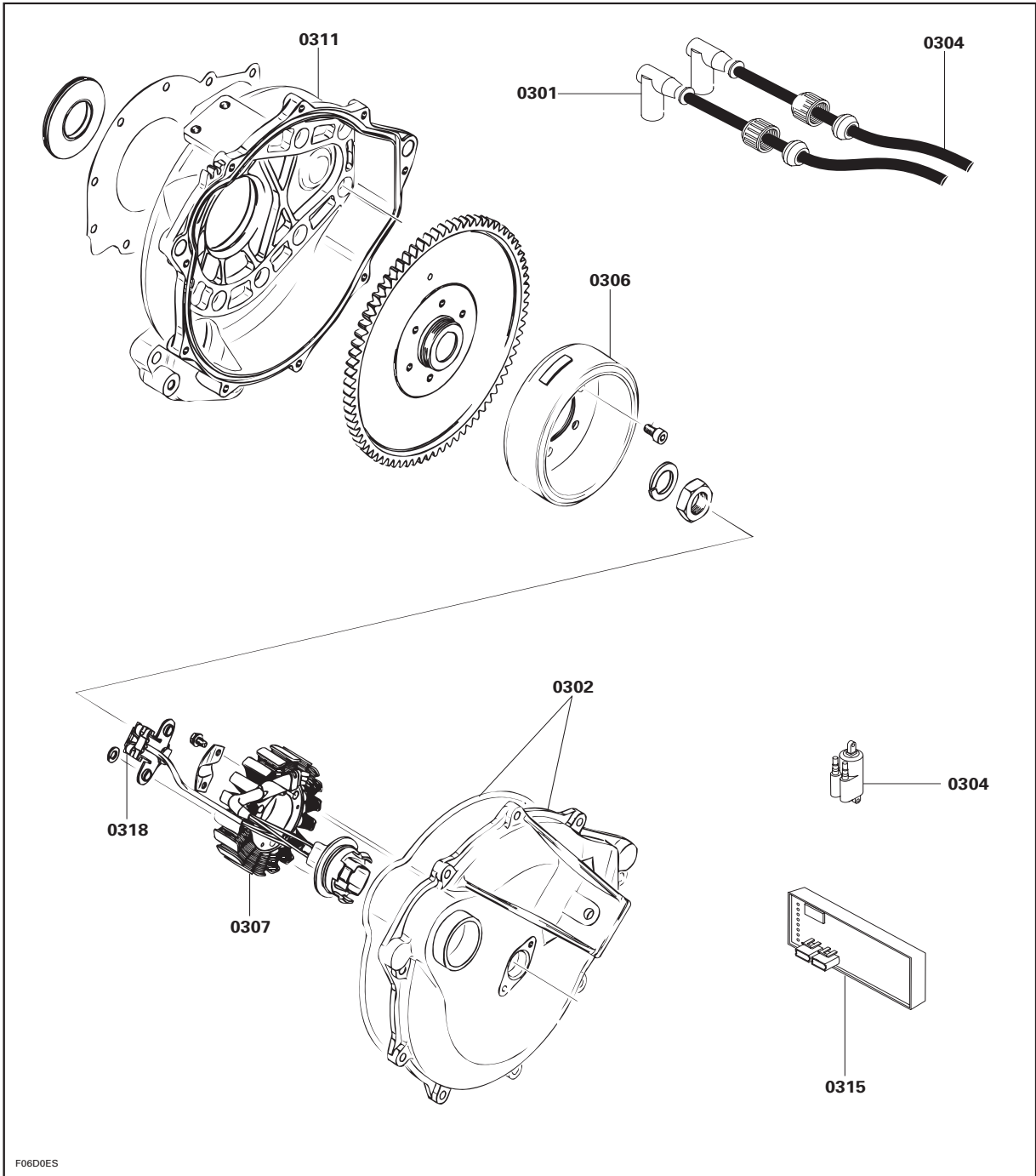
F01D63S



■
RACCORD FEMELLE
FEMALE CONNECTOR

▲
RACCORD MÂLE
MALE CONNECTOR

F01H4DS



F06D0ES

04 ELECTRIC STARTER

1998 FLAT RATE TIME SCHEDULE

SEA-DOO

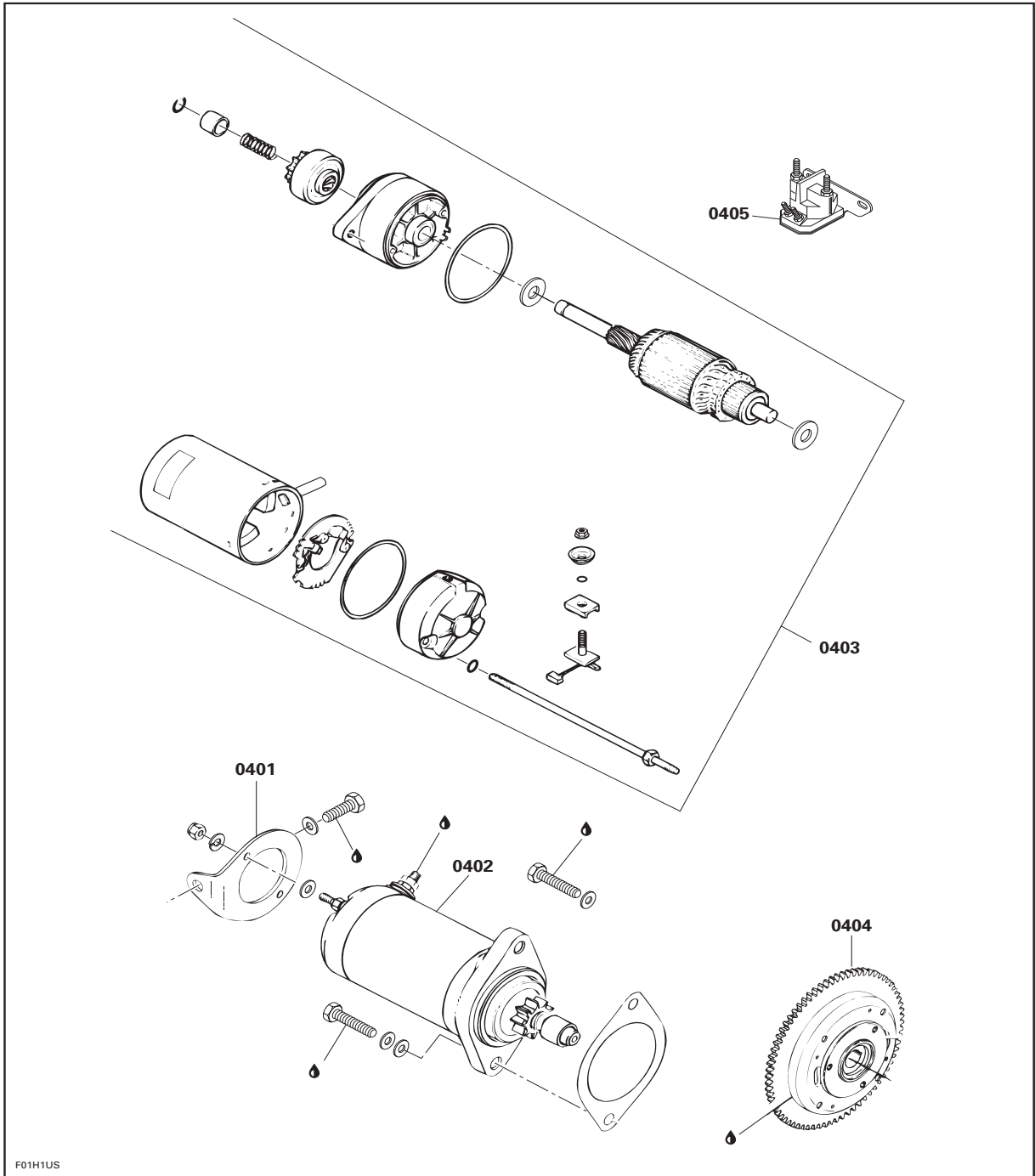
ALWAYS USE THE *LONGEST* FLAT RATE TIME
APPLICABLE TO THE REPAIR PERFORMED.

JOB CODE	JOB DESCRIPTION	5838	5626	5629	5819	5836	5666	5837	5665
		5839	5844	5845 5625		5841	5843	5842	5667
		SPX	GS	GSX Ltd	GTS	GTi	GTX Rfi	GTX Ltd	XP Ltd
04 00	NO LABOR INVOLVED								
04 01	STARTER SUPPORT	1.0	0.3		0.3	0.3	1.0	0.3	1.0
04 02	ELECTRIC STARTER ASSY	1.6	1.2	1.0	1.2	1.2	1.2	1.0	1.6
04 03	ONE OR ALL STARTER COMP.	1.8	1.4	1.6	1.4	1.4	1.8	1.8	1.8
04 04	STARTER RING GEAR	1.4	1.2	3.3	1.2	1.2	1.2	1.2	1.4
04 05	SOLENOID (1)	0.4	0.6	0.4	0.6	0.6	0.6	0.6	0.4
04 08	STARTER COVER			3.3				3.3	3.3
04 09	STARTER DRIVE ASSY			2.1				2.1	2.1

* REQUIRES PRIOR AUTHORIZATION BY DISTRIBUTOR.

** INDICATE LABOUR TIME ON LINE "LABOUR ONLY" OF CLAIM.

*** INDICATE \$\$\$ AMOUNT ON "SUB-CONTRACTED LABOUR" OF CLAIM.



F01H1US

05 PROPULSION

1998 FLAT RATE TIME SCHEDULE

SEA-DOO

**ALWAYS USE THE LONGEST FLAT RATE TIME
APPLICABLE TO THE REPAIR PERFORMED.**

JOB CODE	JOB DESCRIPTION	5838	5626	5629	5819	5836	5666	5837	5665
		5839	5844	5845 5625		5841	5843	5842	5667
		SPX	GS	GSX Ltd	GTS	GTi	GTX Rfi	GTX Ltd	XP Ltd
05 00	NO LABOR INVOLVED								
05 01	FLYWHEEL PROTECTOR	0.3	0.3	0.3	0.3	0.3	0.3	0.3	0.3
05 02	HOSE(FRM BAILERS PICK-UP TO IMP. HOUS.)	0.3	0.3	0.4	0.3	0.3	0.4	0.4	0.4
05 03	BAILER PICK-UP SCREEN LEFT/RIGHT	0.3	0.3	0.3	0.3	0.3	0.3	0.3	0.3
05 04	STEERING NOZZLE,BUSH. SLEEVE	0.3	0.3	0.3	0.3	0.3	0.3	0.3	0.3
05 05	VENTURI,O-RING	0.4	0.4	0.4	0.4	0.4	0.4	0.4	0.4
05 06	IMPL.SHAFT HOUS.COVER, O-RINGS, OIL	0.5	0.5	0.5	0.6	0.5	0.6	0.6	0.5
05 07	PTO FLYWHEEL RUBBER BOOT CLAMP (EACH)	0.3	0.3	0.3	0.3	0.3	0.3	0.3	
05 08	PTO FLYWHEEL RUBBER BOOT	1.2	1.2	1.2	1.2	1.2	1.2	1.2	
05 10	IMPL. HOUS. FITTINGS 3				1.2				
05 11	DRIVE SHAFT,BUMPER CAP	1.2	1.2	1.2	1.2	1.2	1.2	1.2	
05 12	IMPL. SHAFT,IMPL.WASHER,THRUST BEARING	1.6	1.6	1.6	1.6	1.6	1.6	1.6	1.6
05 13	IMPELLER HOUSING	1.4	1.6	1.6	1.6	1.6	1.6	1.6	1.6
05 14	BEARINGS, IMPL. SHAFT SEAL	1.7	1.7	1.7	1.7	1.7	1.7	1.7	1.7
05 15	WEAR RING	1.8	1.8	1.8	1.8	1.8	1.8	1.8	1.8
05 16	HULL STUDS 1 OR 2	0.3	0.3	0.3	1.1	0.3	1.1	1.1	0.3
05 17	HULL STUDS 3 OR 4	0.6	0.6	0.6	1.2	0.6	1.2	1.2	0.4
05 18	WATER INLET GRILL	0.3	0.3	0.3	0.3	0.3	0.3	0.3	0.3
05 19	RIDE SHOE	1.6	1.6	1.6	1.8	1.6	1.8	1.8	1.7
05 20	PTO SIDE FLYWHEEL	1.8	1.8	1.8	2.0	1.8	2.0	1.8	1.8
05 21	IMPL. HOUSING REMOVE/REPLACE	1.0	1.0	1.0	1.0	1.0	1.0	1.0	1.0
05 22	PROP. SYST.(HSG IMPL.,RIDE SHOE, SEAL CAR.)	3.0	3.0	3.0	2.5	3.0	2.5	2.5	3.0
05 23	LOCK. SPRING,LEVER,HANDLE				0.3		0.3	0.3	
05 24	SLIDGING BLOCK				0.4		0.4	0.4	
05 25	TRIANGULAR LEVER				0.6		0.6	0.6	
05 26	GUIDE PLATE				0.5		0.5	0.5	
05 27	REVERSE SUPPORT PLATE				0.8		0.8	0.8	
05 28	SPRING,BUSHING,(REVERSE GATE) 1 OR 2			0.4	0.3	0.4	0.3	0.3	
05 29	REVERSE GATE,RIGHT PLATE,LEFT PLATE								
05 30	REVERSE GATE ASS'Y				0.3	0.3	0.3	0.3	
05 31	REVERSE CABLE (1)				1.2	1.2	1.2	1.2	
05 32	HOSE FROM BILGE PUMP								
05 33	BILGE PUMP								
05 34	REVERSE GATE SUPPORT (1)					0.3			
05 35	SAFETY REVERSE DEVICE					0.5			

* REQUIRES PRIOR AUTHORIZATION BY DISTRIBUTOR.

** INDICATE LABOUR TIME ON LINE "LABOUR ONLY" OF CLAIM.

*** INDICATE \$\$\$ AMOUNT ON "SUB-CONTRACTED LABOUR" OF CLAIM.

05 PROPULSION

1998 FLAT RATE TIME SCHEDULE

SEA-DOO

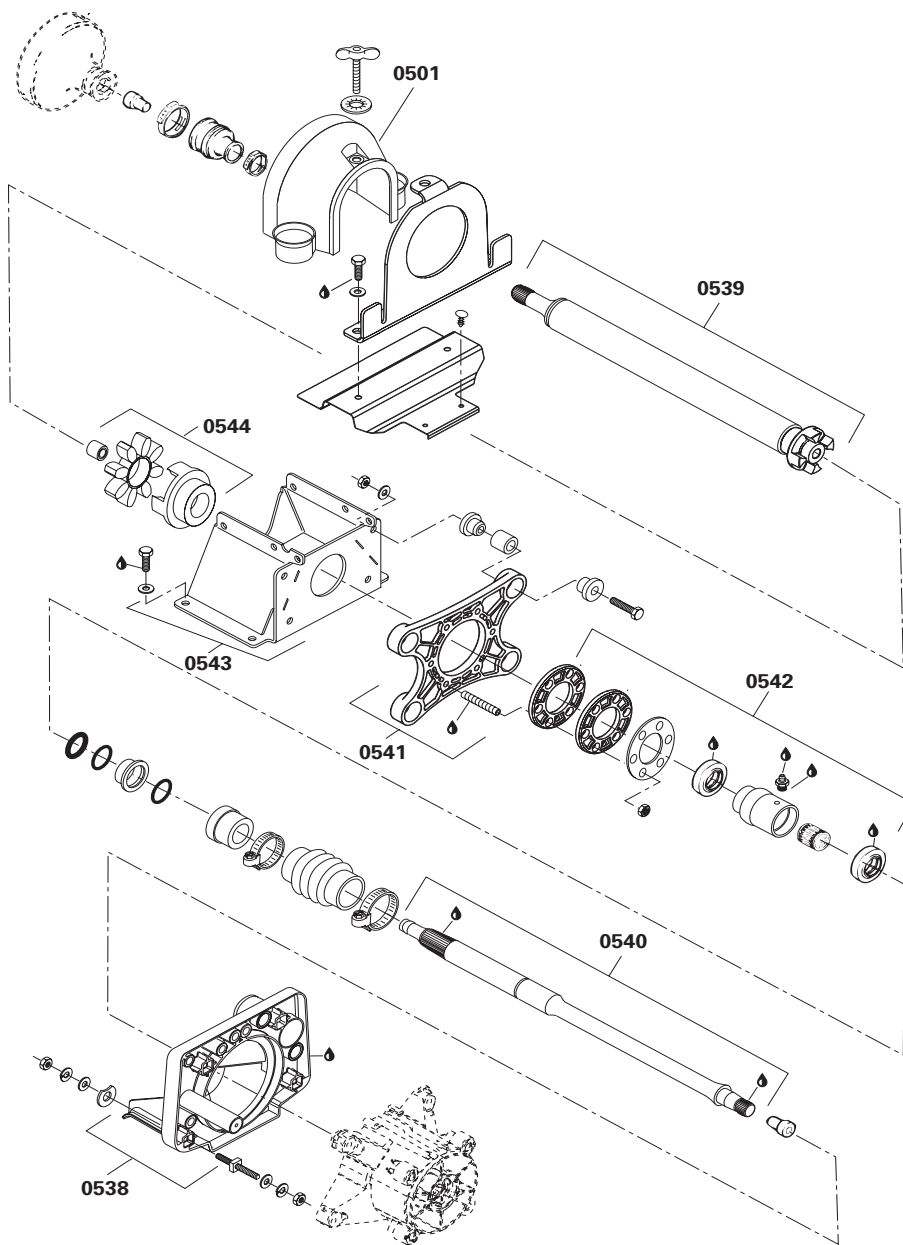
ALWAYS USE THE *LONGEST* FLAT RATE TIME
 APPLICABLE TO THE REPAIR PERFORMED.

JOB CODE	JOB DESCRIPTION	5838	5626	5629	5819	5836	5666	5837	5665
		5839	5844	5845 5625		5841	5843	5842	5667
		SPX	GS	GSX Ltd	GTS	GTi	GTX Rfi	GTX Ltd	XP Ltd
05 36	RIDING PLATE	0.8	0.8	0.8		0.8			
05 38	PUMP SUPPORT	2.4	2.4	2.4		2.4			2.4
05 39	FRONT DRIVE SHAFT								
05 40	REAR DRIVE SHAFT								
05 41	SUPPORT DAMPING								
05 42	SEAL CARRIER								
05 43	SUPPORT SHAFT SUSPENSION								
05 44	COUPLER ASSEMBLY								
05 45	FLOATING / CARBON RING	1.3	1.3	1.3	1.3	1.3	1.3	1.3	1.5

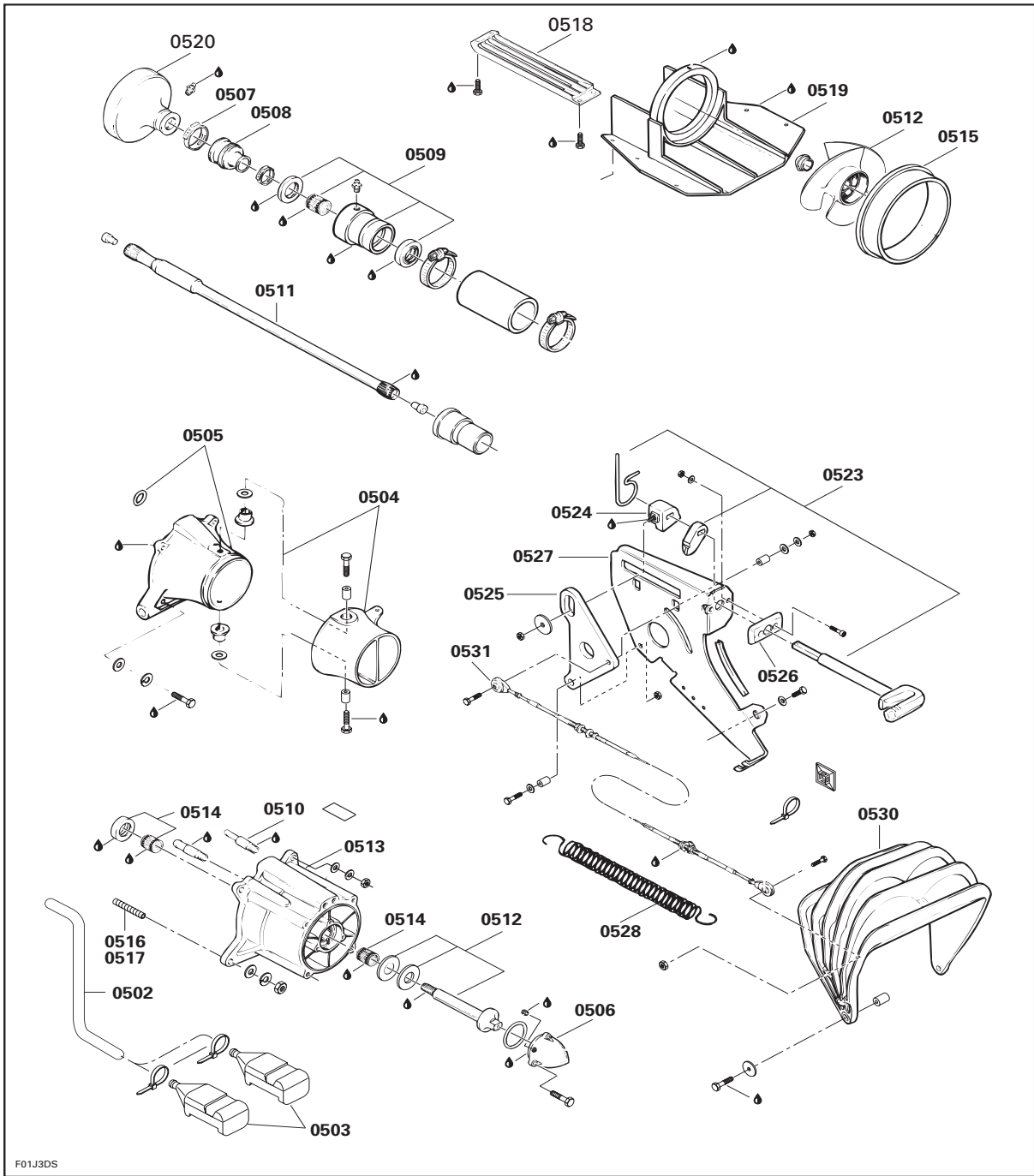
* REQUIRES PRIOR AUTHORIZATION BY DISTRIBUTOR.

** INDICATE LABOUR TIME ON LINE "LABOUR ONLY" OF CLAIM.

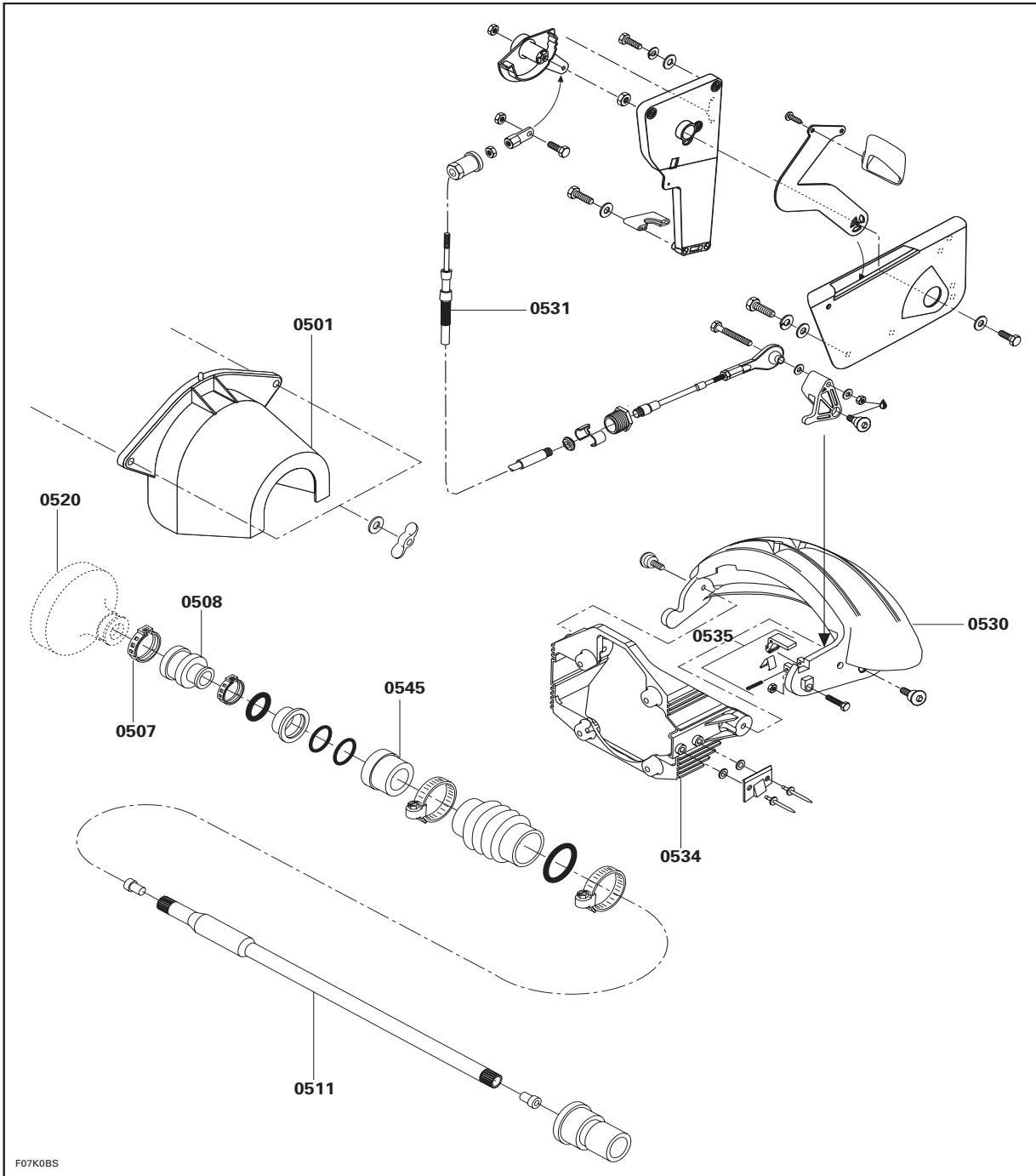
*** INDICATE \$\$\$ AMOUNT ON "SUB-CONTRACTED LABOUR" OF CLAIM.



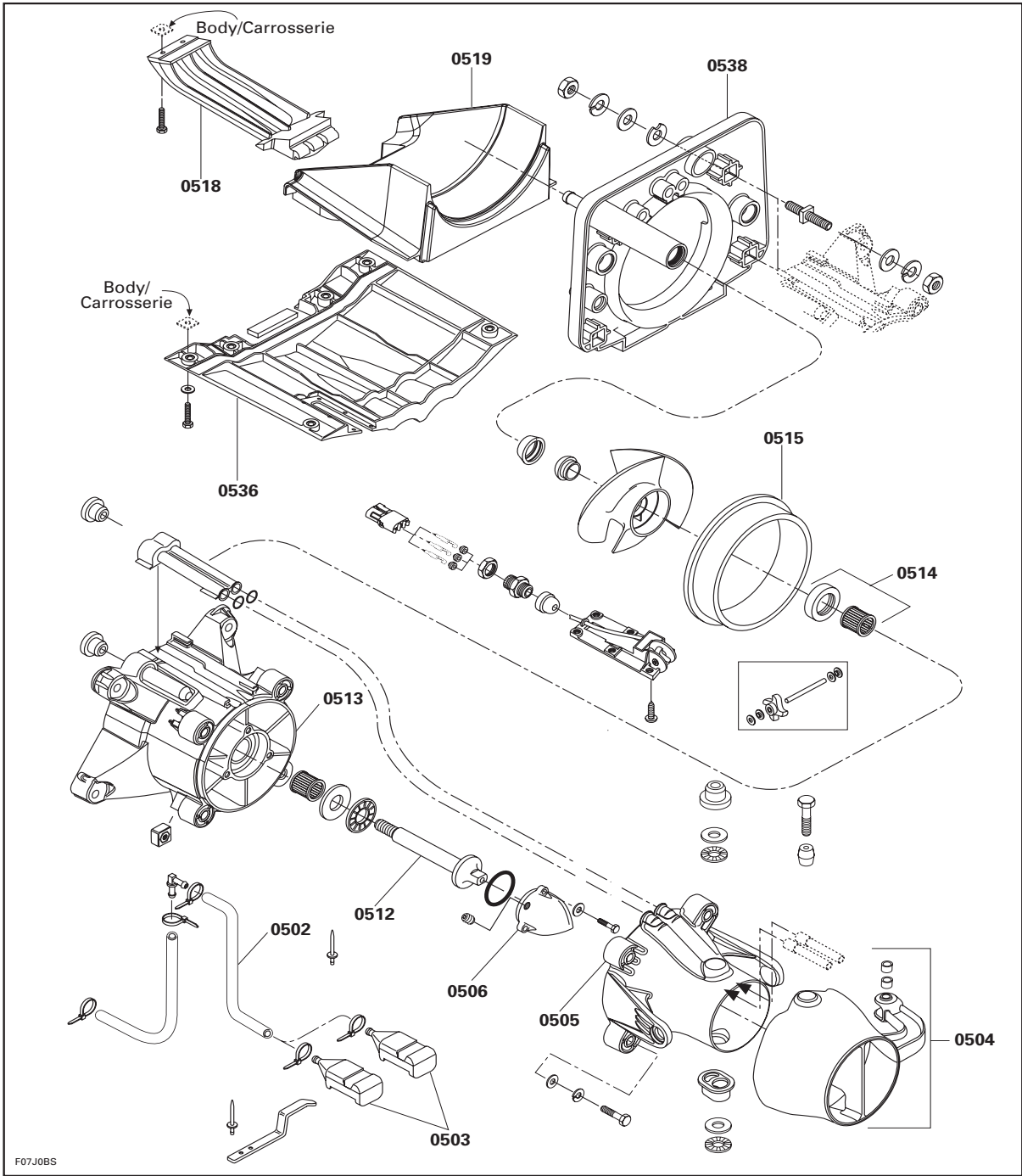
F01J5HS



F01J3DS



F07K0BS



F07J0BS

07 STEERING and CONTROLS

1998 FLAT RATE TIME SCHEDULE

SEA-DOO

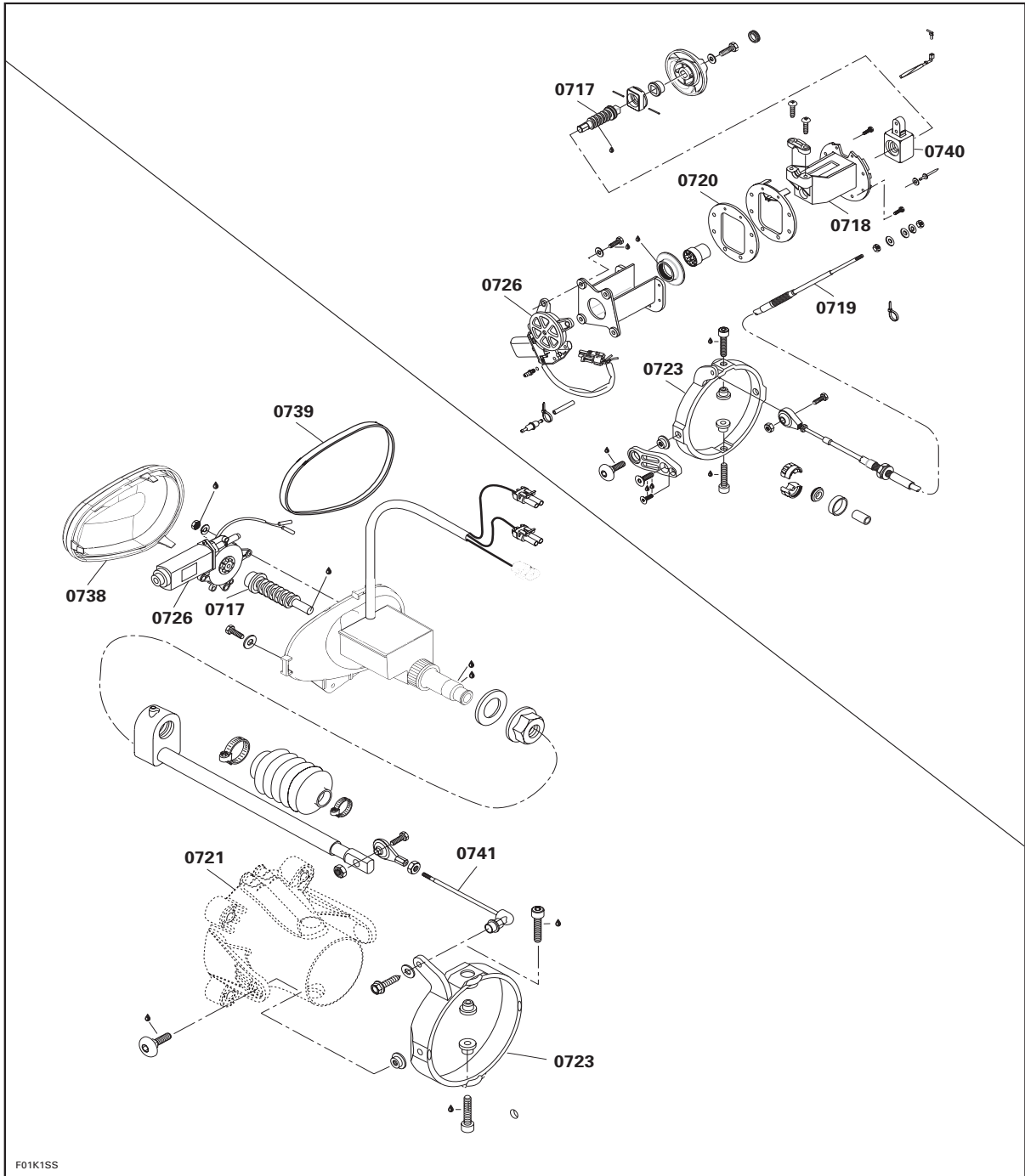
ALWAYS USE THE LONGEST FLAT RATE TIME
APPLICABLE TO THE REPAIR PERFORMED.

JOB CODE	JOB DESCRIPTION	5838	5626	5629	5819	5836	5666	5837	5665
		5839	5844	5845 5625		5841	5843	5842	5667
		SPX	GS	GSX Ltd	GTS	GTi	GTX Rfi	GTX Ltd	XP Ltd
07 00	NO LABOR INVOLVED	N.A.	N.A.	N.A.	N.A.	N.A.	N.A.	N.A.	N.A.
07 01	GRIP 1 OR 2	0.3	0.3	0.3	0.3	0.3	0.3	0.3	0.3
07 02	GRIP 2	0.3	0.3	0.3	0.3	0.3	0.3	0.3	0.3
07 03	HANDLE HOUSING LEFT	0.4	0.4	0.3	0.3	0.3	0.3	0.3	0.4
07 04	HANDLE HOUSING RIGHT	0.4	0.4	0.3	0.3	0.3	0.3	0.3	0.4
07 05	HANDLEBAR COVER,FOAM	0.4	0.4	0.7	0.7	0.7	0.7	0.7	0.7
07 06	HANDLEBAR	0.8	0.8	1.0	1.0	1.0	1.0	1.0	1.0
07 07	STEERING STEM ARM	0.5	0.5	0.5		1.0	1.0	1.0	1.0
07 08	STEERING STEM	1.7	1.7	1.7		1.7	1.7	1.7	1.7
07 09	STEERING COLLAR	1.0			0.8				
07 10	STEERING CABLE SUPPORT	0.3	0.3	0.3	0.3	0.3	0.3	0.3	0.8
07 11	STEERING COLUMN SUPPORT				0.8				
07 12	STEERING SUPPORT BUSHING 2				0.9				
07 13	STEERING CABLE(FROM NOZZLE TO STEM ARM)	0.7	0.7	0.7	0.7	0.7	0.7	0.7	1.1
07 14	STEERING CABLE FRONT BALL JOINT	0.3	0.3	0.3	0.3	0.3	0.3	0.3	0.4
07 15	STEERING CABLE REAR BALL JOINT (1 OR 2)	0.3	0.3	0.3	0.3	0.3	0.3	0.3	0.3
07 17	SCREW	0.9		0.9			0.9		0.9
07 18	VTS BOX (HOUSING)	1.4		1.4					1.4
07 21	VENTURI	0.4	0.4	0.4	0.5	0.5	0.5	0.5	0.4
07 23	RING	0.3		0.3			0.3	0.3	
07 24	NOZZLE (1 OR 2)	0.3	0.3	0.3	0.3	0.3			0.3
07 25	VTS SWITCH	0.4		0.4					0.5
07 26	VTS MOTOR	0.4		0.4					0.4
07 37	STEERING COVER	0.9	0.9	0.9	0.4	0.9	0.4	0.4	0.9
07 38	VTS COVER	0.3		0.3					0.3
07 39	GASKET (VTS)	0.3		0.3					0.3
07 40	SLIDING BLOCK	1.1		1.1			0.9		1.1
07 41	BALL JOINT ON MOULDING ROD	0.3		0.3					0.3
07 45	HANDLE BAR - UPPER PART	-	0.3	0.3		0.3	0.3	0.3	0.3

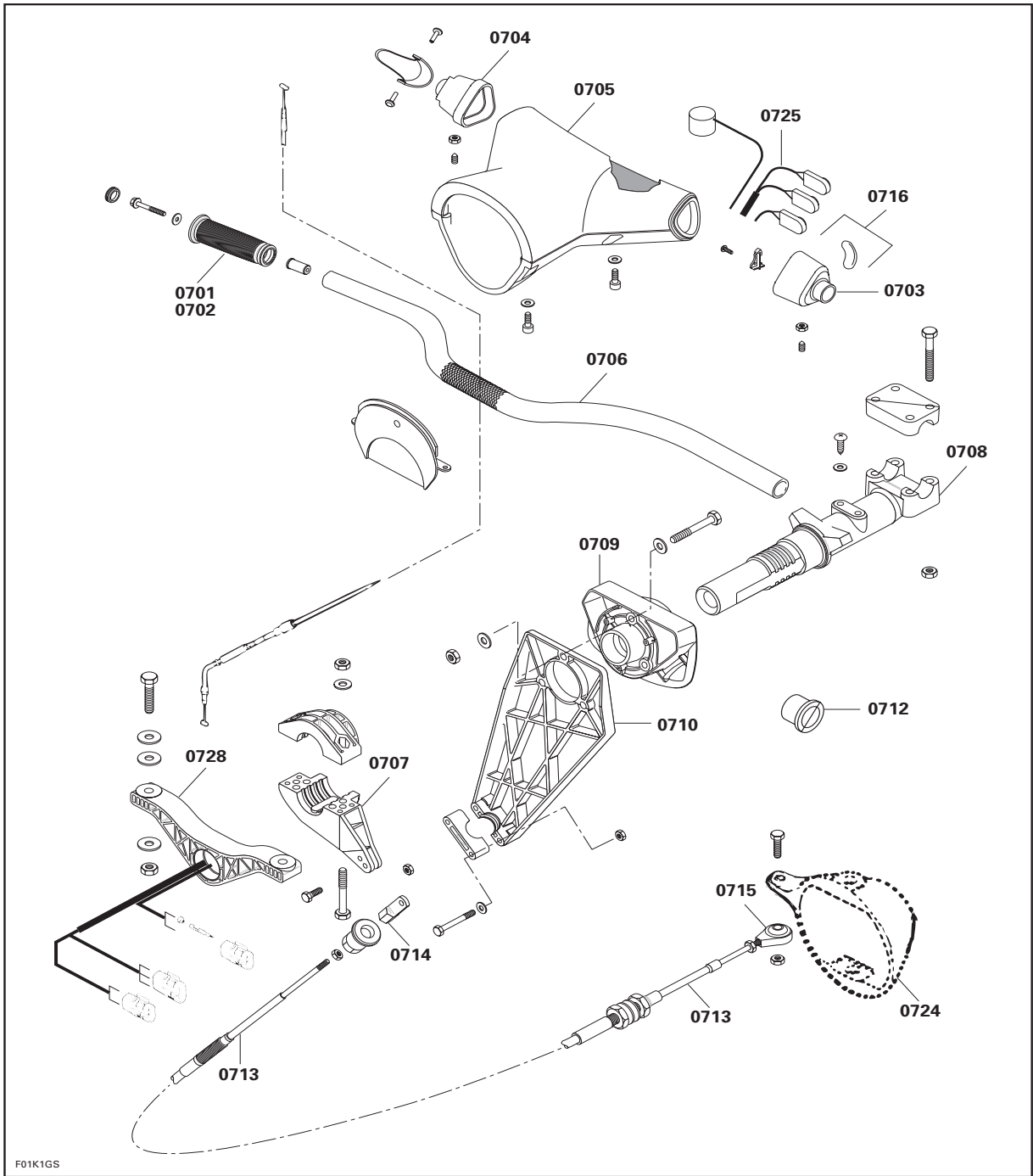
* REQUIRES PRIOR AUTHORIZATION BY DISTRIBUTOR.

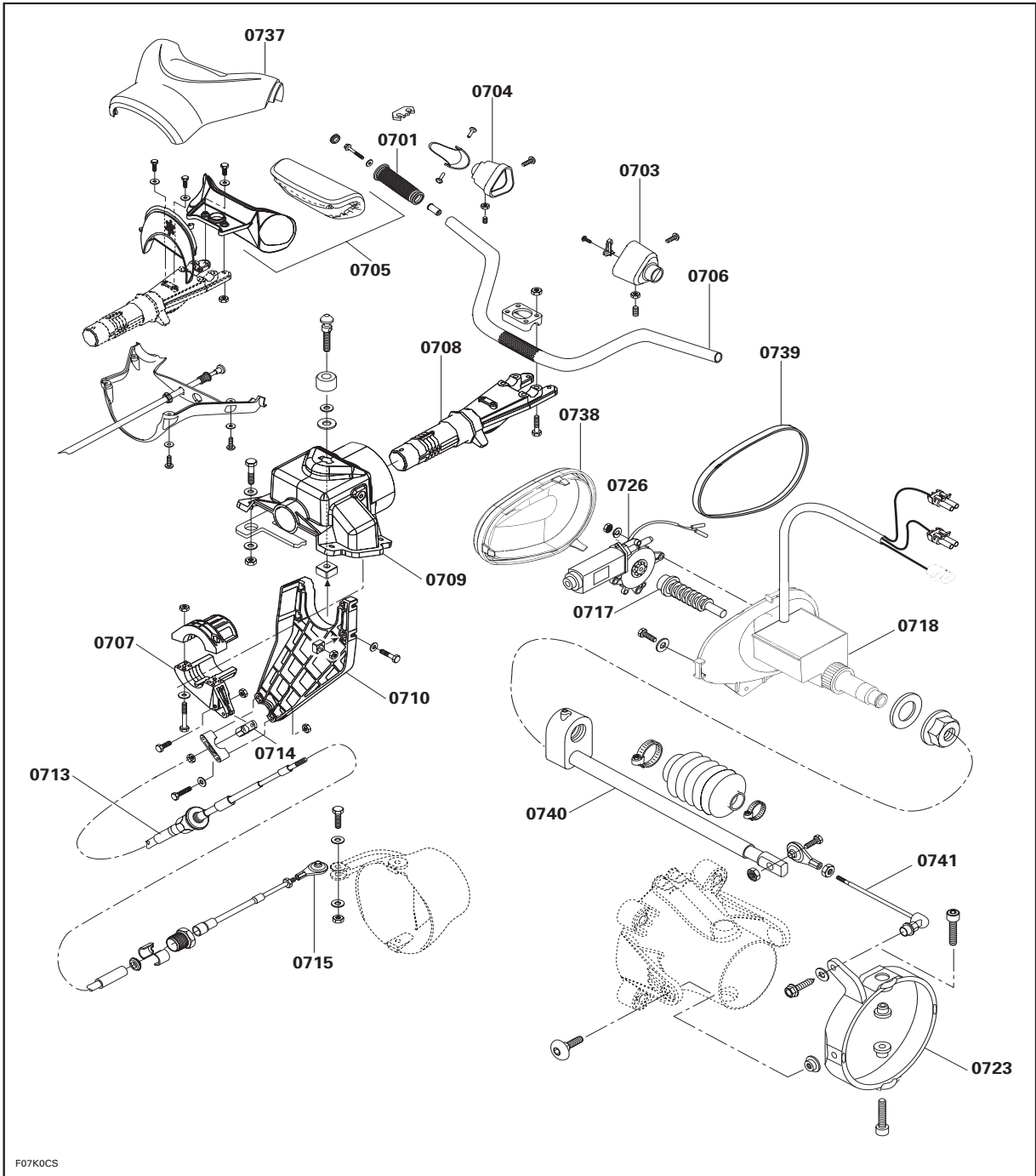
** INDICATE LABOUR TIME ON LINE "LABOUR ONLY" OF CLAIM.

*** INDICATE \$\$\$ AMOUNT ON "SUB-CONTRACTED LABOUR" OF CLAIM.

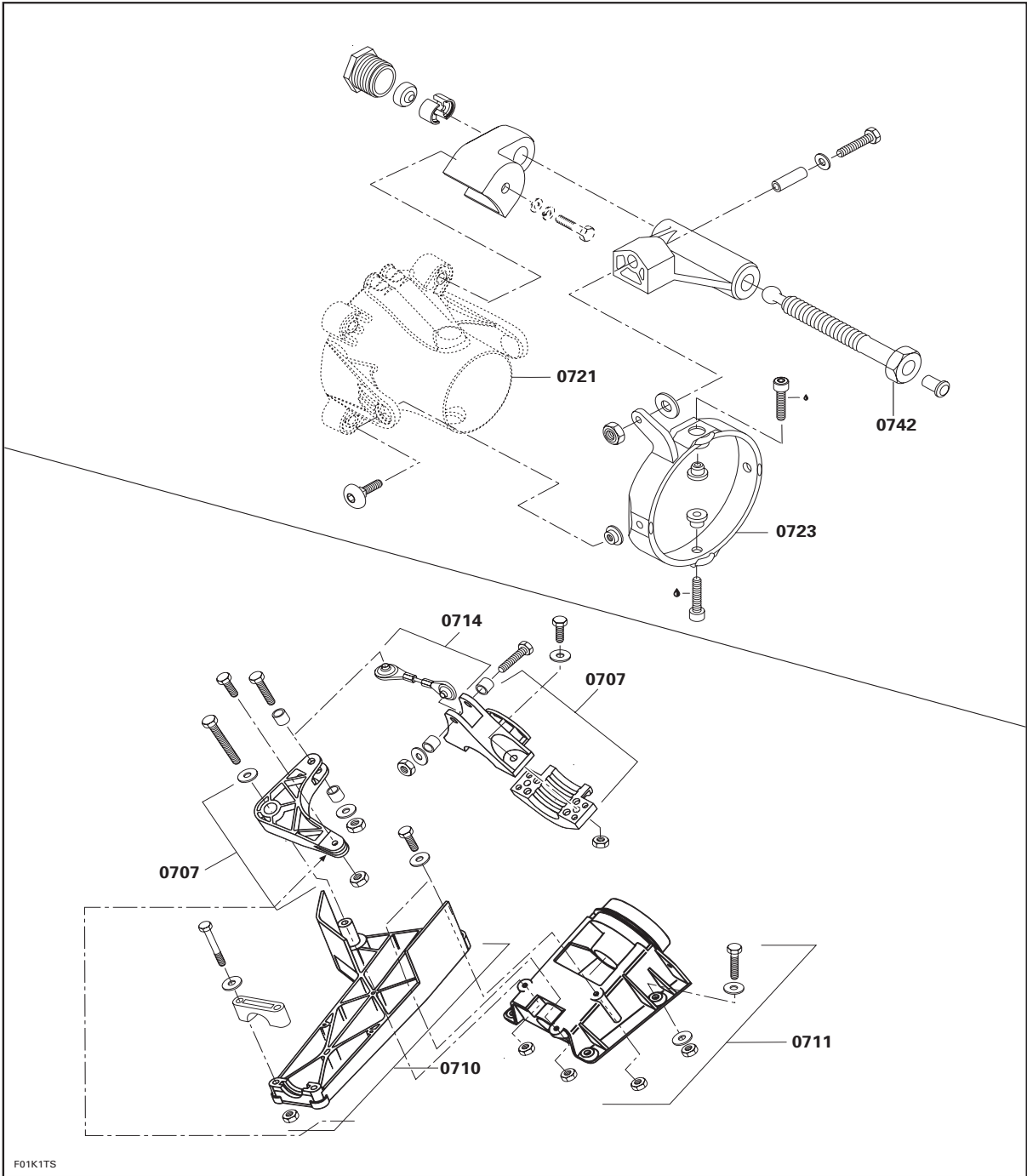


F01K1SS





F07K0CS



F01K1TS

09 BODY

1998 FLAT RATE TIME SCHEDULE

SEA-DOO

**ALWAYS USE THE LONGEST FLAT RATE TIME
APPLICABLE TO THE REPAIR PERFORMED.**

JOB CODE	JOB DESCRIPTION	5838	5626	5629	5819	5836	5666	5837	5665
		5839	5844	5845 5625		5841	5843	5842	5667
		SPX	GS	GSX Ltd	GTS	GTi	GTX Rfi	GTX Ltd	XP Ltd
09 00	NO LABOR INVOLVED	N.A.	N.A.	N.A.	N.A.	N.A.	N.A.	N.A.	N.A.
09 01	FRONT BUMPER	0.5	0.5	0.5	0.5	0.5	0.5	0.5	
09 02	SIDE BUMPER LEFT OR RIGHT	0.9	0.9	0.9	0.9	0.9	0.9	0.9	
09 03	SIDE BUMPER TRIM LEFT OR RIGHT	0.3	0.3	0.3	0.3	0.3	0.3	0.3	
09 04	SIDE(S) BUMPER(S)	1.4	1.4	1.4	1.4	1.4	1.4	1.4	
09 05	SIDE(S) BUMPER(S) TRIM(S)	0.3	0.3	0.5	0.5	0.5	0.3	0.3	
09 06	REAR BUMPER	0.4	0.4	0.4	0.4	0.4	0.4	0.4	
09 07	REAR BUMPER TRIM	0.3	0.3	0.3	0.3	0.3	0.3	0.3	
09 08	CORNER BUMPER LEFT OR RIGHT	0.3	0.5	0.3	0.3	0.3	0.3	0.3	
09 09	STERN (REAR) TIE RING	0.5	0.8	0.5	0.5	0.5	0.5	0.5	
09 10	STORAGE COVER ANY OR ALL PART	0.8	0.3	1.4	1.4	1.4	1.1	1.1	1.2
09 11	STORAGE COVER HINGE	0.3	0.3	0.3	0.3	0.3	0.4	0.4	
09 12	STORAGE COVER LATCH	0.3	0.3	0.3	0.3	0.3	0.3	0.3	
09 13	STORAGE COVER GASKET	0.3	0.3	0.6	0.6	0.6	0.6	0.6	
09 14	STORAGE COVER DECAL	0.3	0.3	0.3	0.3	0.3	0.3	0.3	
09 15	BODY DECAL RIGHT (1 OR 2)	0.6	0.6	0.6	0.6	0.6	0.6	0.6	
09 16	BODY DECAL LEFT	0.6	0.6	0.6	0.6	0.6	0.6	0.6	
09 17	ALL BODY DECAL	1.2	1.2	1.2	1.2	1.2	1.2	1.2	
09 18	AIR INTAKE GRILL (REAR OR FRONT)			0.5	0.5	0.5	0.3	0.3	
09 19	SIDE CARPET 1			0.3	0.3	0.3	0.3	0.3	
09 20	SIDE CARPET 2			0.3	0.3	0.3	0.3	0.3	
09 21	REAR CARPET	0.5	0.5	0.3	0.3	0.3	0.3	0.3	
09 22	FRT SEAT AND/OR RETAINING CLIP						0.3	0.3	
09 23	SEAT ASSY (BOTTOM)	0.3	0.3	0.3	0.3	0.3	0.3	0.3	0.8
09 24	SEAT BASE, SEAT COVER	1.0	1.0	1.2	1.2	1.2	1.0	1.0	0.9
09 25	SEAT HINGE	0.3	0.3	0.3	0.3	0.3	0.3		
09 26	SEAT BASE SEAL	0.3	0.3	0.3	0.3	0.3	0.3	0.3	
09 27	SEAT BASE CYL.,SUPPORT								
09 28	SEAT LATCH ANY OR ALL PART	0.3	0.3	0.3	0.3	0.3	0.3	0.3	
09 29	SEAT LATCH HOOK	0.3	0.3	0.3	0.3	0.3	0.3	0.3	
09 30	LOCK PIN (SEAT OR STORAGE COVER)	0.3	0.3	0.3	0.3	0.3	0.3	0.3	
09 31	BILGE VENT HOSE (FRONT)	0.3	0.3	0.3	0.3	0.3			0.3
09 32	BILGE VENT HOSE (REAR)	0.3	0.3	0.3	0.3	0.3			0.3
09 36	REAR BAFFLE				1.3				
09 37	GRAB HANDLE	0.4	0.4	0.4	0.3	0.4	0.4	0.4	0.4

* REQUIRES PRIOR AUTHORIZATION BY DISTRIBUTOR.

** INDICATE LABOUR TIME ON LINE "LABOUR ONLY" OF CLAIM.

*** INDICATE \$\$\$ AMOUNT ON "SUB-CONTRACTED LABOUR" OF CLAIM.

09 BODY

1998 FLAT RATE TIME SCHEDULE

SEA-DOO

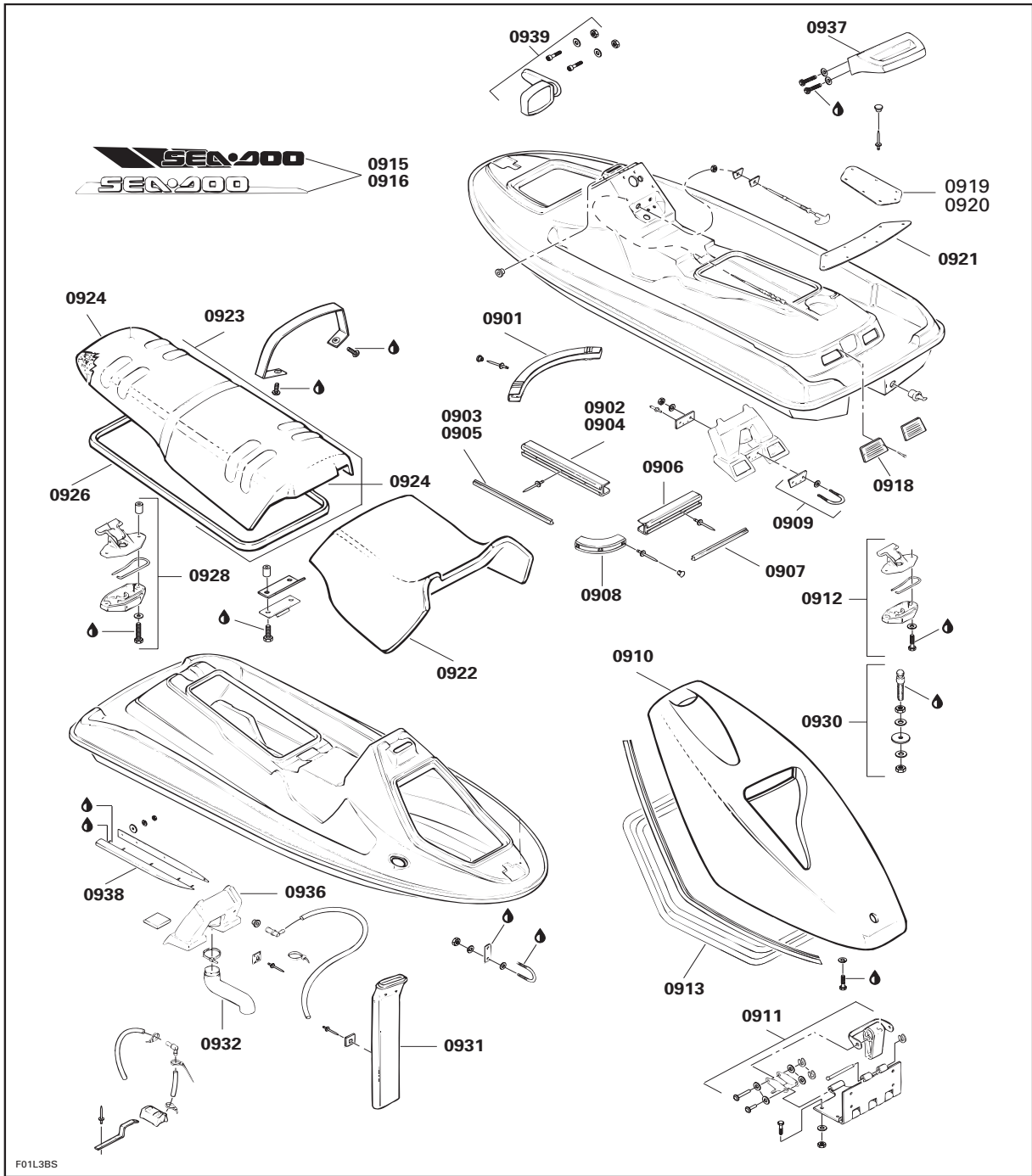
**ALWAYS USE THE LONGEST FLAT RATE TIME
APPLICABLE TO THE REPAIR PERFORMED.**

JOB CODE	JOB DESCRIPTION	5838	5626	5629	5819	5836	5666	5837	5665
		5839	5844	5845 5625		5841	5843	5842	5667
		SPX	GS	GSX Ltd	GTS	GTi	GTX Rfi	GTX Ltd	XP Ltd
09 38	STRAKES LEFT OR RIGHT (EACH)	0.9	0.9	0.9	0.9	0.9	0.9	0.9	0.9
09 39	MIRROR	0.4	0.4	0.4	0.3	0.4	0.3	0.3	
09 40	MIRRORS (TWO)	0.6	0.6	0.6	0.4	0.6	0.4	0.4	0.5
09 43	DASH BOARD DECAL	0.4	0.4	0.4	0.4	0.4	0.4	0.4	0.3
09 44	SIDE HULL DECAL LEFT	0.6	0.6	0.6	0.4	0.6	0.6	0.6	0.6
09 45	SIDE HULL DECAL RIGHT	0.4	0.3	0.6	0.6	0.6	0.6	0.6	0.6
09 46	SIDE MOLDING (LEFT OR RIGHT)				0.3				0.5
09 49	BOARDING NEOPRENE CARPET (RIGHT OR LEFT)				0.3		0.3	0.3	0.6
09 50	REAR SIDE BODY DECALS	0.4	0.4	0.4	0.3	0.4	0.3	0.3	
09 51	BOMBARDIER DECAL(S)	0.3	0.3	0.3	0.3	0.3	0.3	0.3	0.3
09 56	LATERAL GRILL RH/LH	0.4	0.4						
09 57	REAR SEAT ASSEMBLY					0.3			0.3
09 68	SHOCK ON SEAT								0.7
09 69	BELLOWS SHOCK								0.6
09 70	BELLOWS OUTER								0.8
09 71	SUPPORT ARM								0.4
09 77	DEFLECTOR	0.2	0.5	1.2	1.0	1.2	1.2	1.2	
09 78	STORAGE TRAY	0.3	0.3	0.3	0.3	0.3	0.3	0.3	0.3
09 79	CARGO HOOK						0.4		
09 80	CARGO CLEATS						0.4		

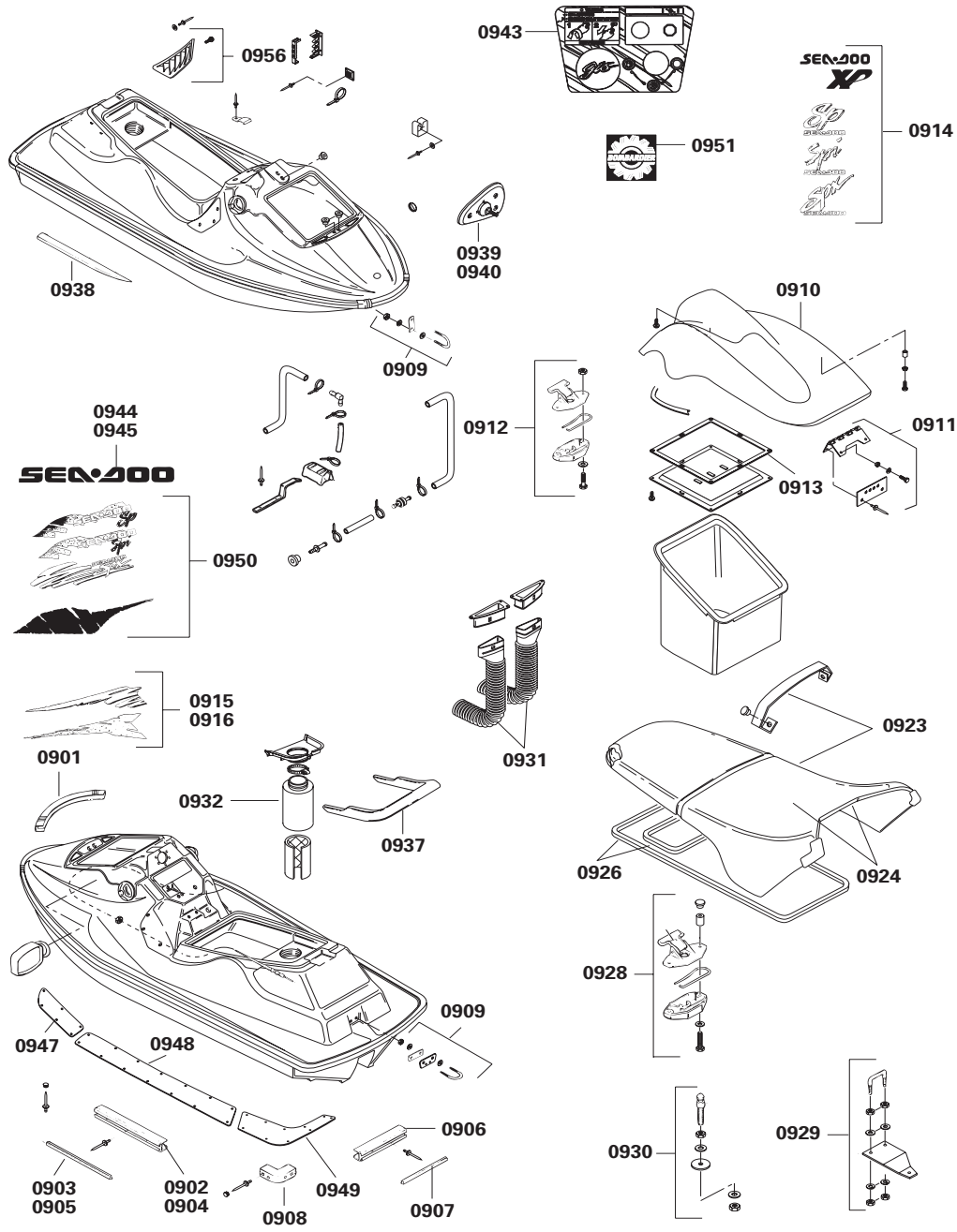
* REQUIRES PRIOR AUTHORIZATION BY DISTRIBUTOR.

** INDICATE LABOUR TIME ON LINE "LABOUR ONLY" OF CLAIM.

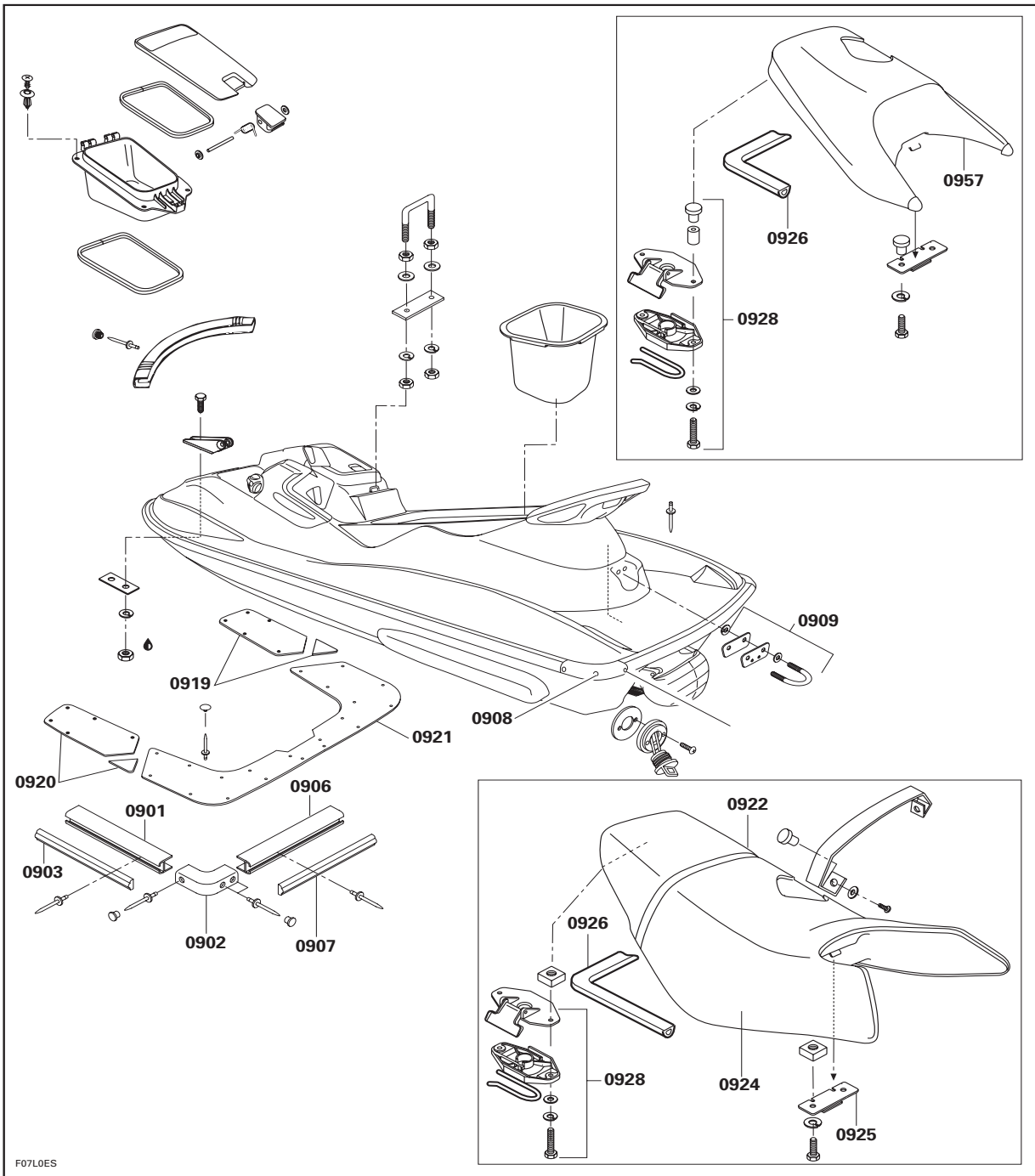
*** INDICATE \$\$\$ AMOUNT ON "SUB-CONTRACTED LABOUR" OF CLAIM.



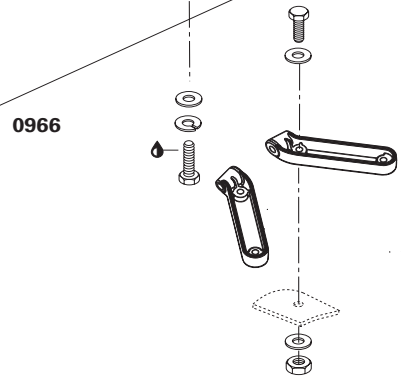
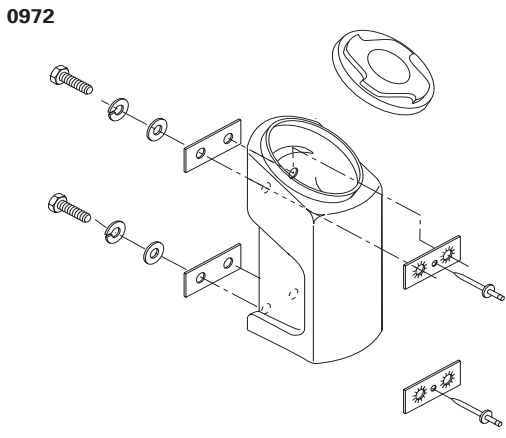
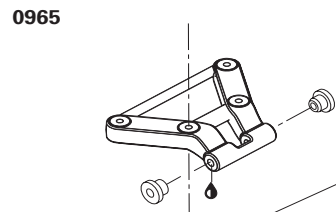
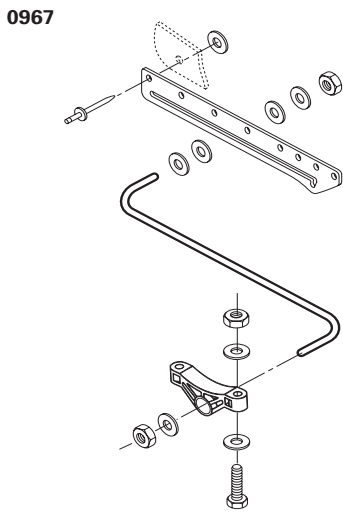
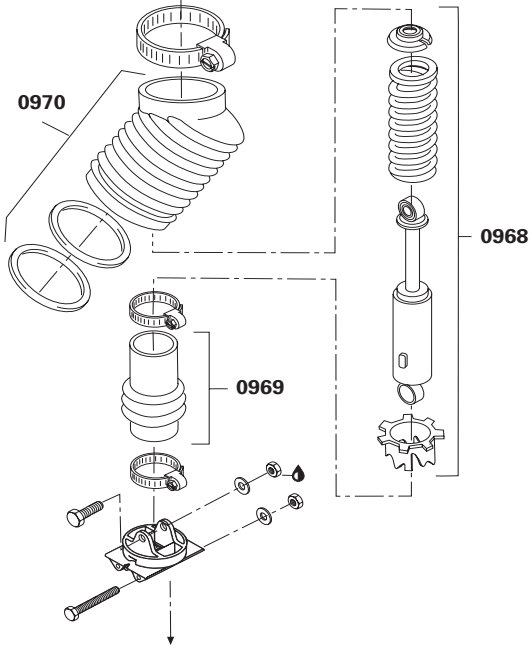
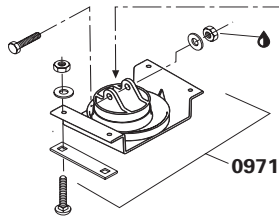
F01L3BS



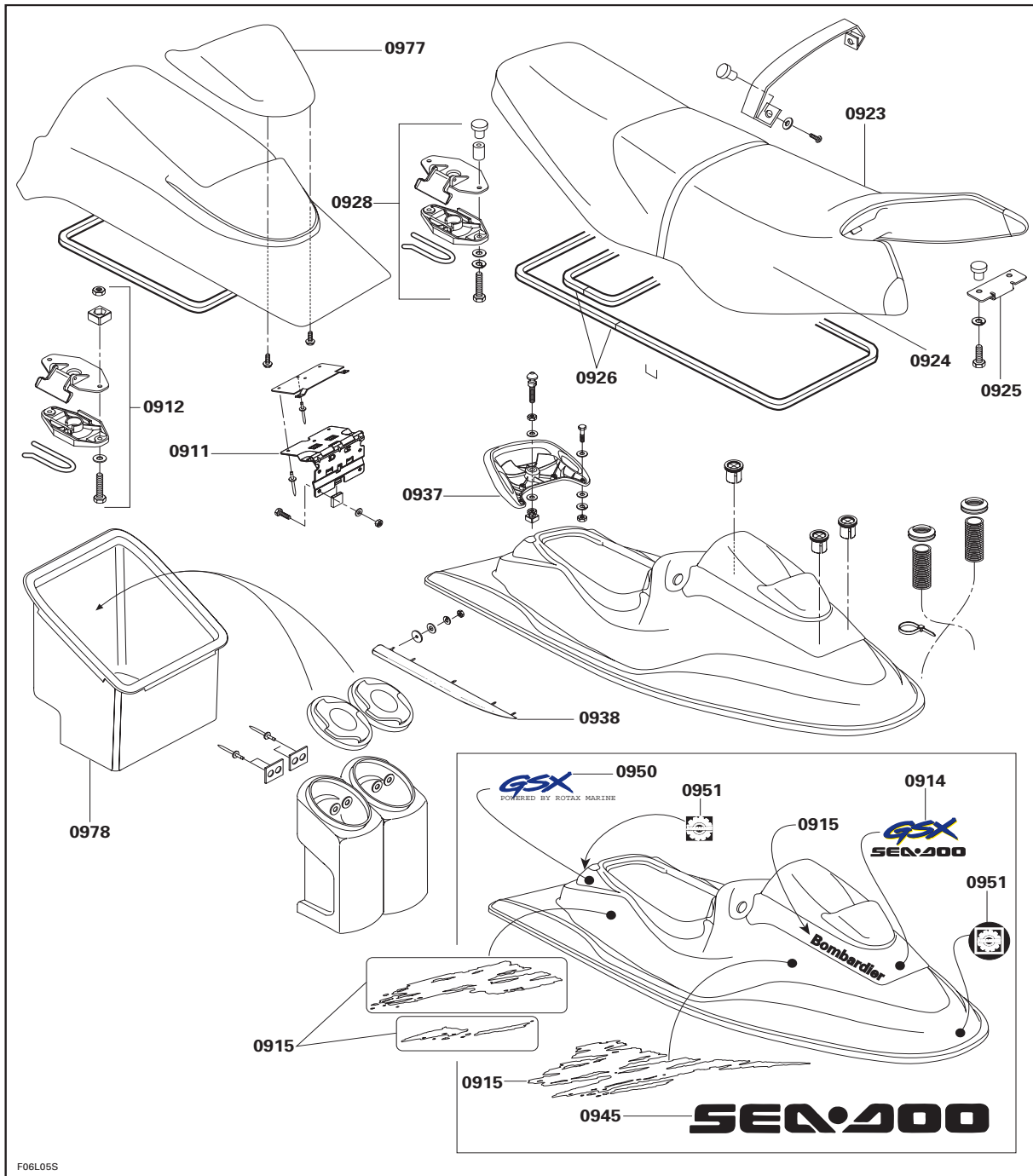
F01L6CS



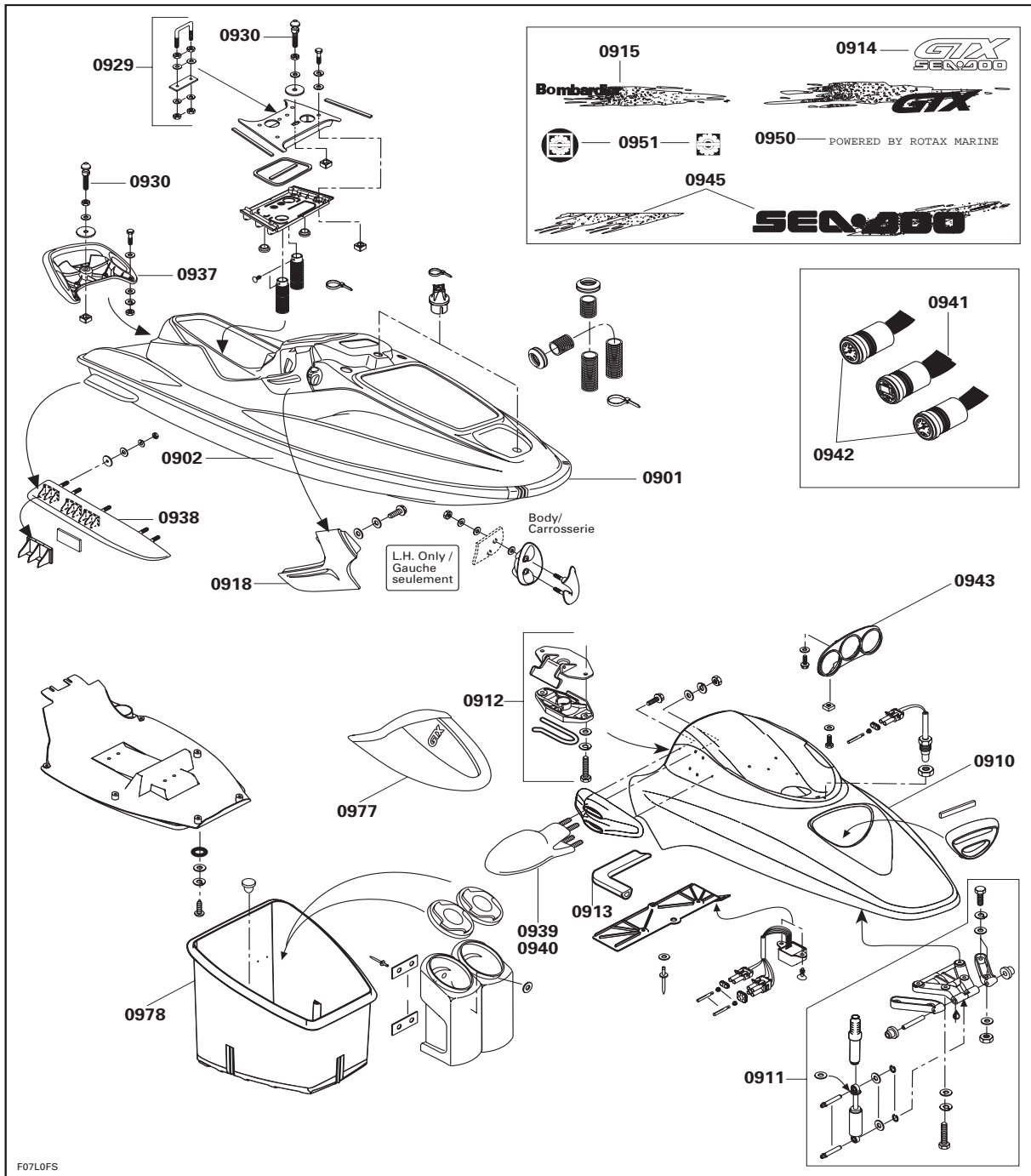
F07L0ES

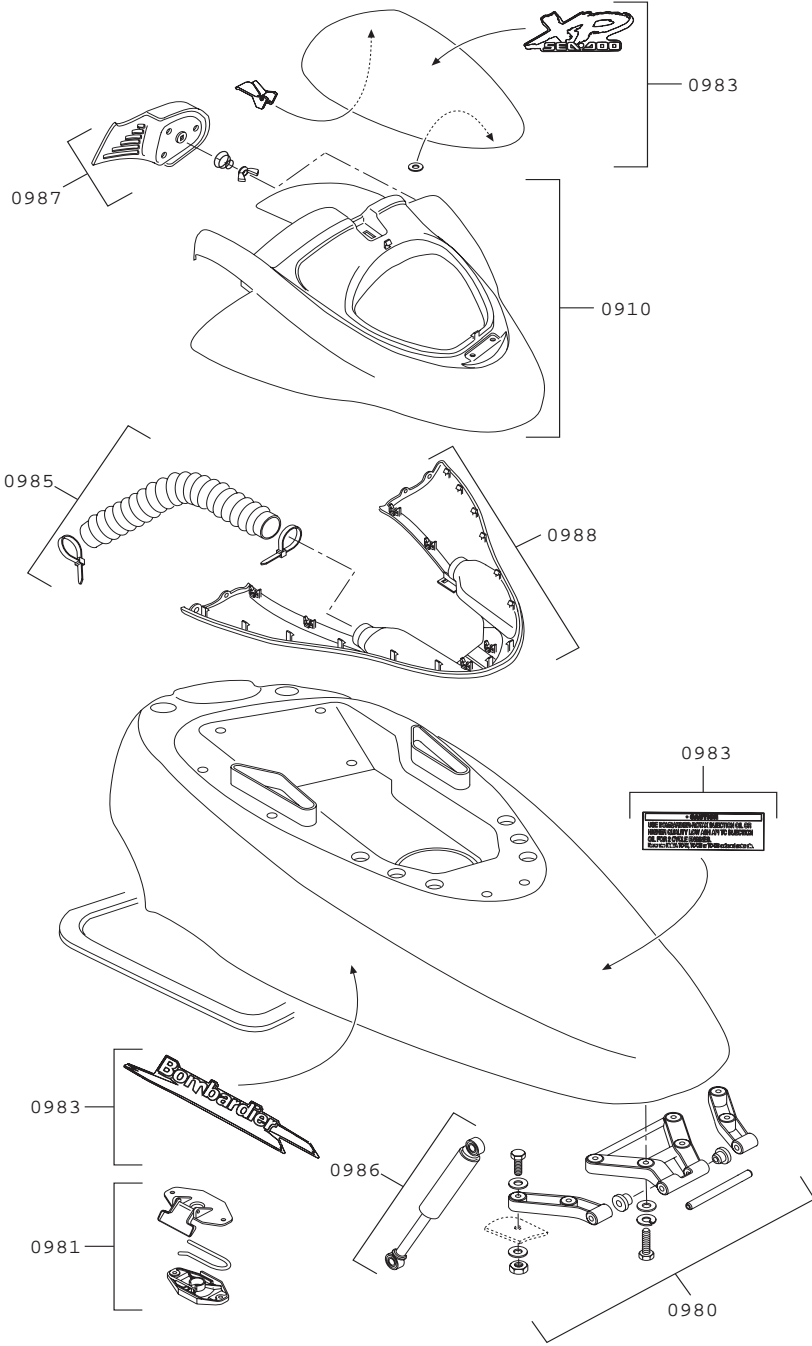


F01L84S

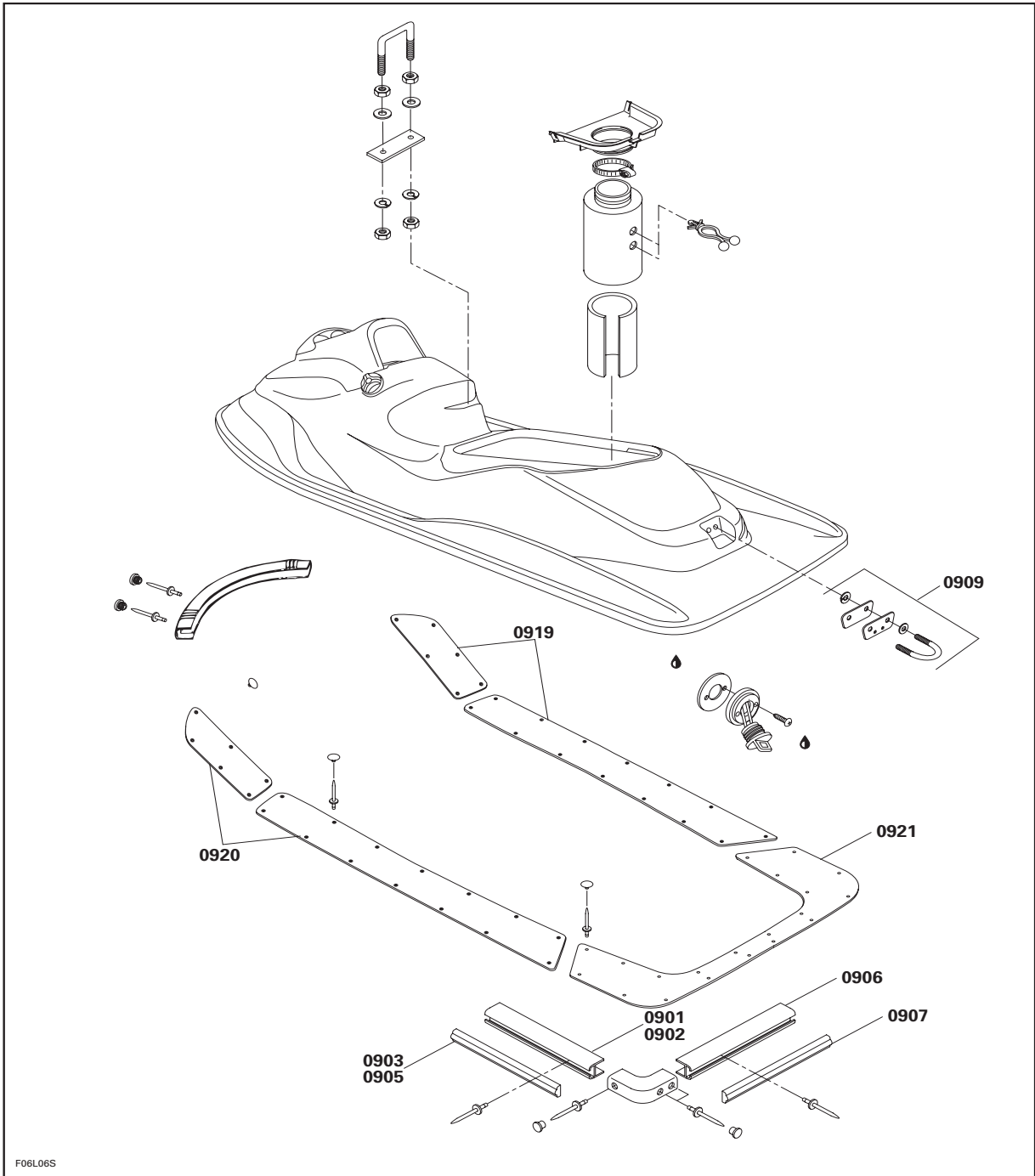


F06L05S





F08L0MS



F06L06S

10 ELECTRICAL

1998 FLAT RATE TIME SCHEDULE

SEA-DOO

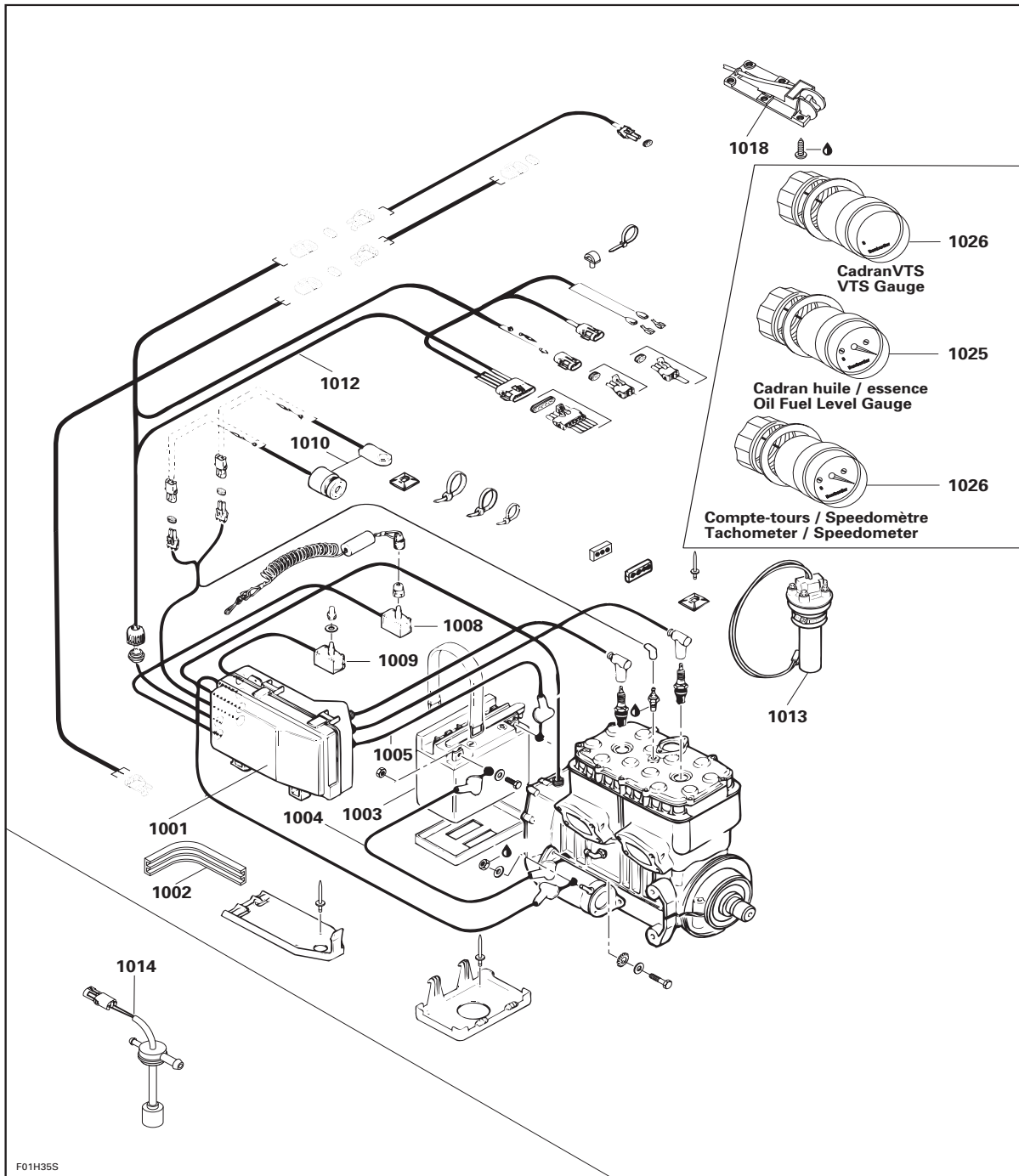
**ALWAYS USE THE LONGEST FLAT RATE TIME
APPLICABLE TO THE REPAIR PERFORMED.**

JOB CODE	JOB DESCRIPTION	5838	5626	5629	5819	5836	5666	5837	5665
		5839	5844	5845 5625		5841	5843	5842	5667
		SPX	GS	GSX Ltd	GTS	GTi	GTX Rfi	GTX Ltd	XP Ltd
10 00	NO LABOR INVOLVED	N.A.	N.A.	N.A.	N.A.	N.A.	N.A.	N.A.	N.A.
10 01	ELECTRIC BOX re/re	1.2			1.0		1.0		
10 02	SEAL OF ELECTRIC BOX COVER	0.5			0.5		0.5		
10 03	BATT. AND/OR BASE BOX AND/OR ROD (1 OR 2)	0.3	0.3	0.3	0.3	0.3	0.3	0.3	0.3
10 04	GROUND CABLE (FRM STARTER TO BATT.)	0.4	0.4	0.4	0.4	0.4	0.4	0.4	0.4
10 05	BATT. RED CABLE (BATT. TO SOLENOID)	0.4	0.4	0.4	0.4	0.4	0.4	0.4	0.4
10 06	BATT. RED CABLE (BATT. TO SOLENOID)	0.8	0.8	0.8	1.0	0.8	1.0	1.0	0.8
10 07	FUSE HOLDER			0.8		0.8	0.8	0.8	
10 08	TETHER CORD SWITCH	0.5	0.7	0.7	0.5	0.7	0.5	0.5	0.7
10 09	STARTING SWITCH	0.7	0.5	0.7	0.5	0.7	0.5	0.5	0.7
10 10	ENGINE OVERHEATING BEEPER(STOP SWITCH)	0.9	0.9	0.9	0.9	0.9	0.9	0.9	0.9
10 11	REGULATOR/RECTIFIER	0.3	0.3		0.5	0.3	0.5	0.5	0.3
10 12	WIRING HARNESS	2.0	2.0	2.0	1.2	2.0	2.0	2.0	2.0
10 13	ELECTRIC FUEL SENSOR (IN FUEL TANK)	0.8	1.5	0.8	1.0	0.8	1.0	1.0	1.2
10 14	ELECTRIC OIL SENSOR (IN OIL TANK)	0.5	0.5	0.5	0.6	0.5	0.6	0.6	0.3
10 18	SPEEDOMETER PICK-UP			0.4		0.4	0.4	0.4	0.4
10 25	FUEL/MULTIFONCTION GAUGE		0.5	0.5		0.4	0.5	0.5	0.6
10 26	TACHOMETER OR SPEEDOMETER OR VTS GAUGE	0.5		0.5		0.4	1.2	1.2	0.5
10 28	TETHER CORD PROGRAMING	0.3	0.3	0.3	0.3	0.3	0.3	0.3	0.3

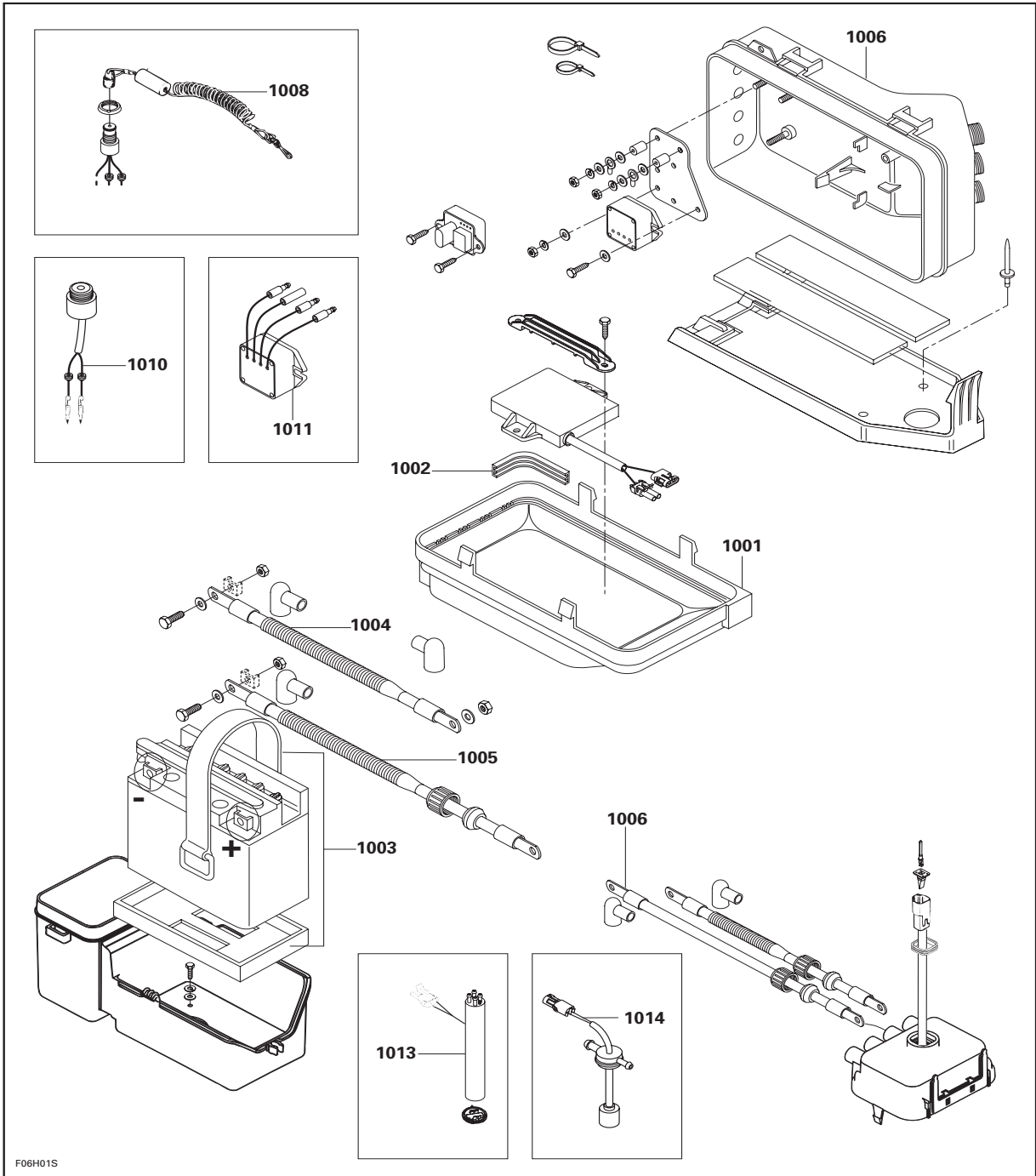
* REQUIRES PRIOR AUTHORIZATION BY DISTRIBUTOR.

** INDICATE LABOUR TIME ON LINE "LABOUR ONLY" OF CLAIM.

*** INDICATE \$\$\$ AMOUNT ON "SUB-CONTRACTED LABOUR" OF CLAIM.



F01H35S



F06H01S

ALWAYS USE THE LONGEST FLAT RATE TIME
 APPLICABLE TO THE REPAIR PERFORMED.

JOB CODE	JOB DESCRIPTION	5838	5626	5629	5819	5836	5666	5837	5665
		5839	5844	5845 5625		5841	5843	5842	5667
		SPX	GS	GSX Ltd	GTS	GTi	GTX Rfi	GTX Ltd	XP Ltd
11 00	NO LABOR INVOLVED	N.A.	N.A.	N.A.	N.A.	N.A.	N.A.	N.A.	N.A.

* REQUIRES PRIOR AUTHORIZATION BY DISTRIBUTOR.

** INDICATE LABOUR TIME ON LINE "LABOUR ONLY" OF CLAIM.

*** INDICATE \$\$\$ AMOUNT ON "SUB-CONTRACTED LABOUR" OF CLAIM.

SUGGESTION FOR CHANGE

SEA-DOO
1998 FLAT RATE TIME SCHEDULE

DEALER'S CODE : _____

DEALER'S NAME : _____

ADDRESS : _____

Model Description	Year	Operation	Job Code	Present Flat Rate Time	Suggested Flat Rate Time
----------------------	------	-----------	----------	------------------------------	--------------------------------

DETAILED PROCEDURE USED :

SIGNATURE

DATE (YYYY - MM - DD)

SEND TO :

BOMBARDIER
RECREATIONAL PRODUCTS
WARRANTY ADMINISTRATION DEPARTMENT
VALCOURT QC J0E 2L0

WARRANTY PARTS TO RETURN

**PISTON
CRANKSHAFT
CYLINDER
CRANKCASE
SHORT BLOCK
ENGINE ASSEMBLY**

REFER TO THE DEALER WARRANTY GUIDE FOR ADDITIONAL INFORMATION.

**PART NUMBERS REQUIRED FOR
FIBERGLASS REPAIRS CLAIMED UNDER SPECIAL LABOUR**

Model No.	Model Name	Complete Ass'y	Lower Body(Hull)	Upper Body(Top)
5838 / 5839	SPX		291001136	291001137
5626 / 5844	GS	291001168	292000483	291001169
5629 / 5845	GSX Ltd	291001172	292000489	291001173
5819 /	GTS	291001144	292000470	291001145
5836 / 5841	GTi	291001223	292000504	291001043
5666 / 5843	GTX Rfi	291001153	29200363	291000928
5837 / 5842	GTX Ltd	291001155	292000476	291001156
5665 / 5667	XP Ltd		292000441	291001097