



Date : **May 9 2013**                      Subject : **Service Tools**                      No                      2013-8

Year	Model
All	All

BRP is proud to introduce its latest Service Tools Bulletin. These special tools were designed to help you efficiently service BRP vehicles.  
Please always make sure to use special tools along with the appropriate Shop Manual(s) and respect all safety measures.

**Mandatory Tools:** These tools are absolutely needed to perform certain service procedures. They will be automatically shipped to dealerships. They do not need to be ordered separately.

**Recommended Tools:** These tools will facilitate the Technicians work. They will not be automatically shipped to dealerships. They need to be ordered separately.

## Table of contents

### Tools by System:

Engine .....	P	2
Fuel .....	P	4
Cooling .....	P	4
Electrical .....	P	5
Lubrication .....	P	6
Transmission / Propulsion .....	P	6
Brake .....	P	8
Steering .....	P	8
Suspension .....	P	9
Various .....	P	10
<b>Index of tools by Part Number:</b> .....	P	12

# Engine



Vacuum/pressure pump  
**P/N 529 021 800** Recommended  
 All models



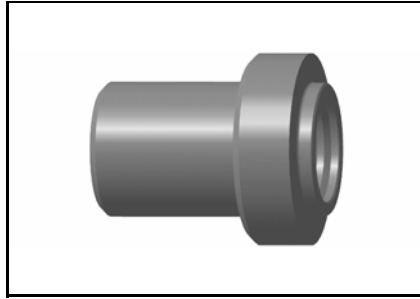
Engine leak down test kit  
**P/N 529 035 661** Recommended  
 All 4-stroke engines  
 To perform a leak down test on engine.



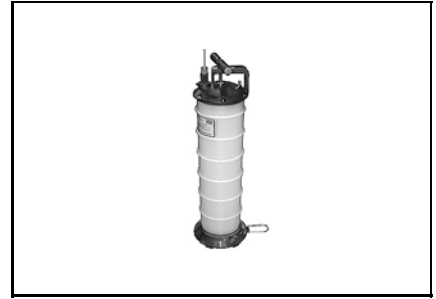
Valve stem seal installer  
**P/N 529 035 687** Recommended  
 1503, 991 engine



Valve spring compressor  
**P/N 529 035 724** Recommended  
 4-TEC engines  
 To be used with valve spring compressor cup 529 035 764 and 529 036 073



Seal pusher  
**P/N 529 035 766** Recommended  
 All V-twin, 330/400, 610/500 eng.  
 Use with 529 036 130



Suction pump  
**P/N 529 035 880** Recommended



Oil seal installer  
**P/N 529 035 933** Recommended  
 449/991 engines, Outlander 330/400  
 Use with handle 420 877 650 Same usage as 529 036 069.



Oil seal installer  
**P/N 529 036 069** Recommended  
 449/991 engines, Outlander 330/400  
 Use with handle 420 877 650  
 Same usage as 529 035 933.



Piston circlip installer 991  
**P/N 529 036 072** Recommended  
 991



Valve spring compressor cup  
**P/N 529 036 073** Recommended  
 449/500/610/991/503  
 To be used with 529 035 724

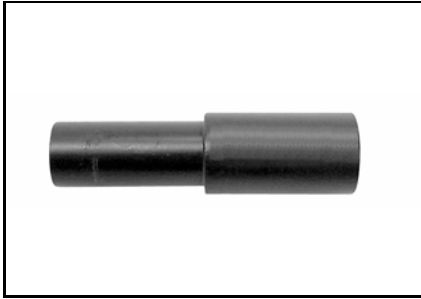


Valve guide remover (6 mm)  
**P/N 529 036 074** Recommended  
 449, 991 engines  
 Valve guide pusher

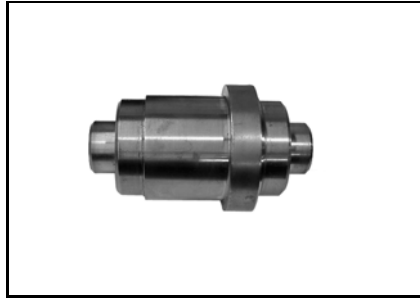


Valve guide installer (6 mm)  
**P/N 529 036 075** Recommended  
 449, 991 engines  
 Valve guide insertion jig

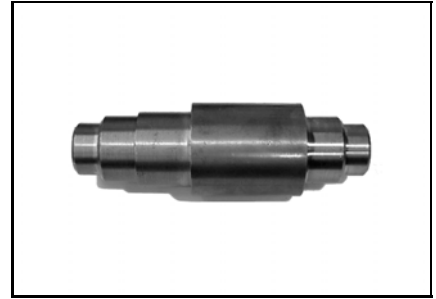
# Engine



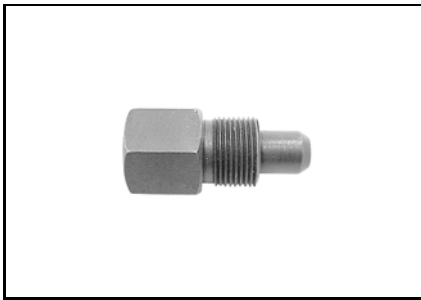
Crankcase seal pusher  
**P/N 529 036 092** Recommended  
 991



Crankshaft plain bearing tool  
**P/N 529 036 093** Recommended  
 991 plain bearing



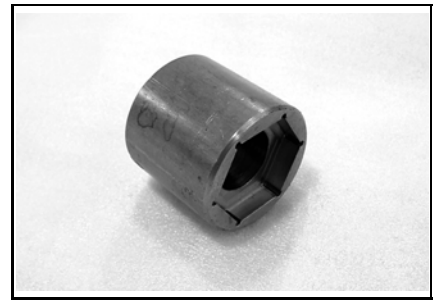
Balance shaft plain bearing rem/inst  
**P/N 529 036 094** Recommended  
 991



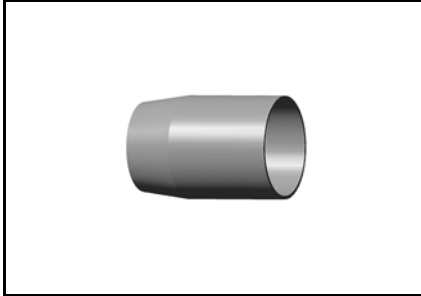
Magneto puller  
**P/N 529 036 097** **Mandatory**  
 991



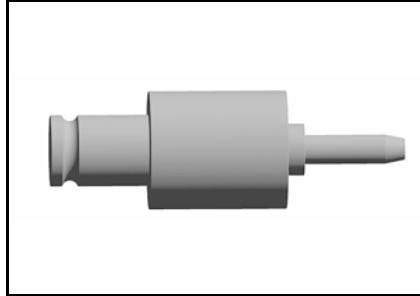
Puller/locking tool  
**P/N 529 036 098** **Mandatory**  
 610/500, 991, V-490, V-660, V-810, V-1010



Socket 46 mm machined  
**P/N 529 036 114** **Mandatory**  
 991



Main shaft protector  
**P/N 529 036 123** Recommended  
 991



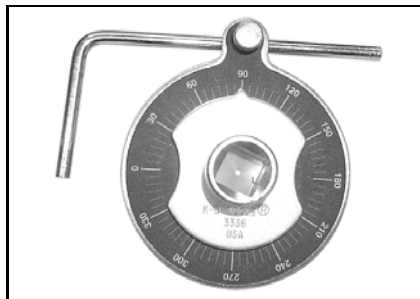
Main shaft seal pusher  
**P/N 529 036 124** Recommended  
 991



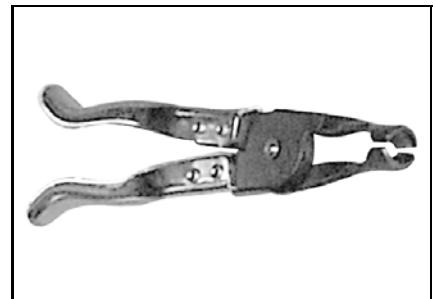
Engine lifting tool  
**P/N 529 036 181** Recommended  
 991



Piston ring compressor  
**P/N Snap-on RC 980** Recommended  
 4-TEC  
 Not sold by BRP



Torque angle gauge  
**P/N Snap-on TA362** Recommended  
 Used on most 4-stroke engines  
 Not sold by BRP



Valve stem seal removal plier  
**P/N Snap-on YA 8230** Recommended  
 1503, 991 engines, DS650  
 Not sold by BRP

## Fuel



Pressure gauge

P/N 529 035 709

**Mandatory**

Injection type engines

Use with 529035652, 529035714 and 529036023



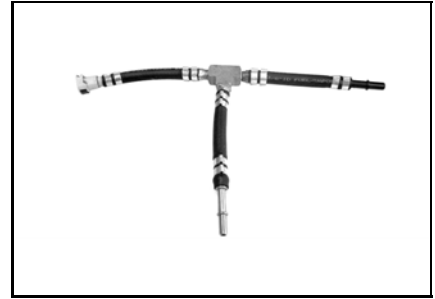
Disconnect tool

P/N 529 035 714

**Mandatory**

Injection models

Used also with gauge P/N 529 035 709, 529 035 652 and 529 036 023



Fuel hose adapter

P/N 529 036 023

**Mandatory**

Injection type vehicles

To be used with 529 035 709.  
Replacement clip 513 033 135



Throttle body synchronizer

P/N carbtune pro

Recommended

Roadster



Throttle body synchronizer

P/N Motion\_Pro

Recommended

Roadster

Motion Pro or equivalent

## Cooling



Oil seal pusher

P/N 529 035 757

Recommended

330/400 and all V-twin



Test cap

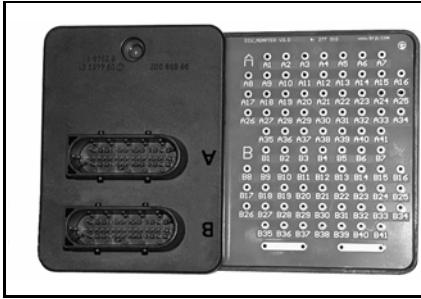
P/N 529 035 991

Recommended

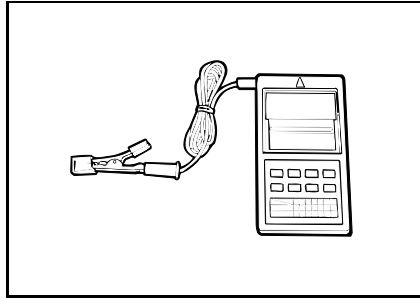
All models

To be used with vacuum/pressure pump 529 021 800.

# Electrical



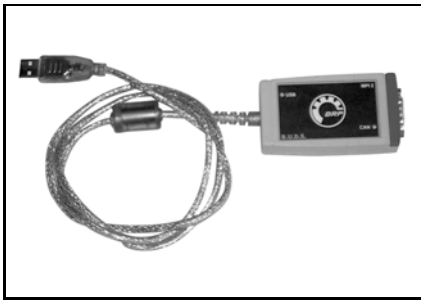
ECM adapter tool  
**P/N 420 277 010** **Mandatory**  
 All models  
 All injected 2-TEC & 4-TEC with VDO ECM



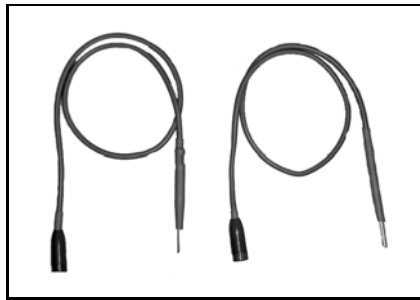
Digital induction tachometer  
**P/N 529 014 500** Recommended  
 All models



Fluke 115 multimeter  
**P/N 529 035 868** Recommended  
 All models



MPI-2 interface card  
**P/N 529 036 018** **Mandatory**  
 Replaces the MPI.



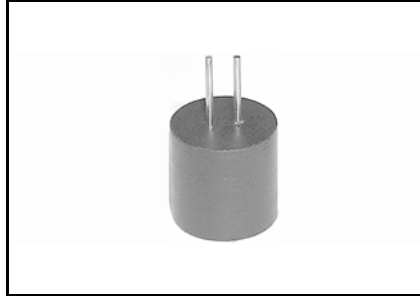
Back probe test wires  
**P/N 529 036 063** Recommended  
 All models  
 To back probe various connectors.



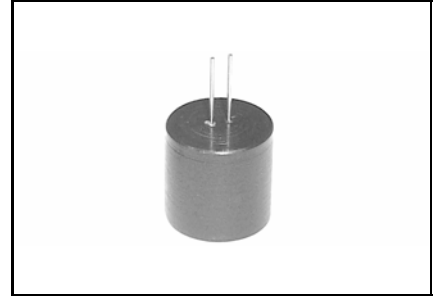
Master key  
**P/N 529 036 106** **Mandatory**  
 Roadster



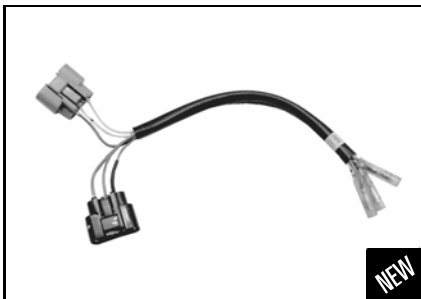
ECM adapter tool  
**P/N 529 036 166** **Mandatory**  
 ECM BOSCH



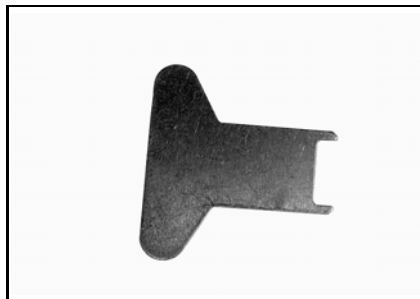
ECM terminal remover 3.36  
**P/N 529 036 174** Recommended  
 All models



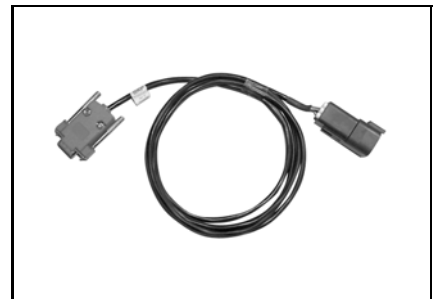
ECM terminal remover 2.25  
**P/N 529 036 175** Recommended  
 All models



Magneto diagnostic harness  
**P/N 529 036 199** Recommended

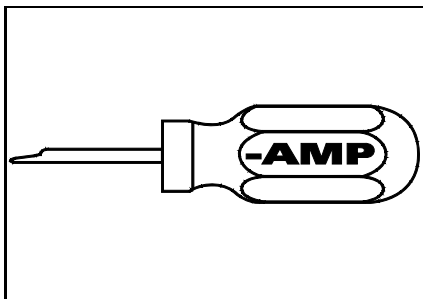


Spanner tool  
**P/N 529 036 223** Recommended  
 Roadster  
 to tighten the nut on auxiliary audio socket



MPI-2 diagnostic cable  
**P/N 710 000 851** **Mandatory**  
 All D.E.S.S. equipped vehicles

## Electrical



Multilock terminal extraction tool

P/N **AMP 755430-2** Recommended

Not sold by BRP

## Lubrication



Adapter hose

P/N **529 035 652**

**Mandatory**

4-stroke engines

Used with 529 035 709.

## Transmission / Propulsion



Oil seal installer

P/N **529 036 070** Recommended

449, 991

Insertion jig for gearshift shaft.



Protection sleeve

P/N **529 036 071** Recommended

449, 991

Gearshift shaft

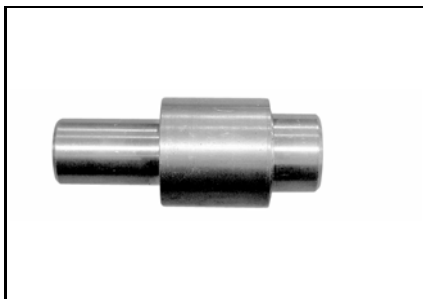


Main shaft seal installer

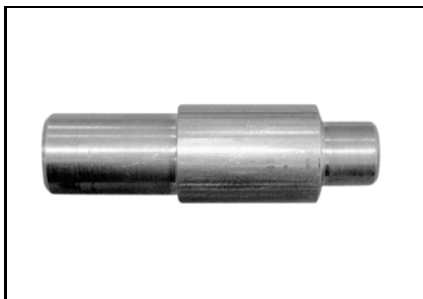
P/N **529 036 088** Recommended

991

## Transmission / Propulsion



Bearing pusher/remover  
**P/N 529 036 095** Recommended  
 991



Bearing pusher  
**P/N 529 036 096** Recommended  
 991



Socket spanner  
**P/N 529 036 113** **Mandatory**  
 Roadster  
 Rear wheel internal screw



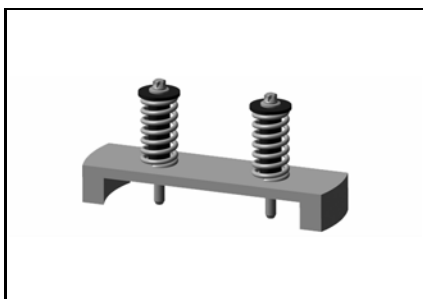
Belt tension meter  
**P/N 529 036 115** **Mandatory**  
 Roadster  
 Belt adjustment



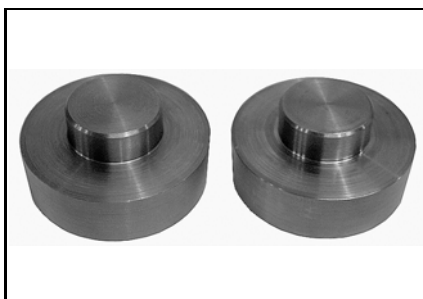
Clutch assembly holder  
**P/N 529 036 133** **Mandatory**  
 991 engines



Oil pressure gauge  
**P/N 529 036 142** **Mandatory**  
 991  
 Used for SE5 transmission



Clutch pack compression tool  
**P/N 529 036 144** **Mandatory**  
 991 SE5  
 Used for SE5 transmission



Rear wheel bearing pusher  
**P/N 529 036 246** **Mandatory**  
 Roadster



SM5 Clutch piston tool  
**P/N 529 036 258** **Mandatory**  
 991



C-clip remover  
**P/N SRP 3** Recommended



Seal remover  
**P/N YA1 05** Recommended

## Brake



Master cylinder rod adjuster

P/N 529 036 119

**Mandatory**

Roadster

## Steering

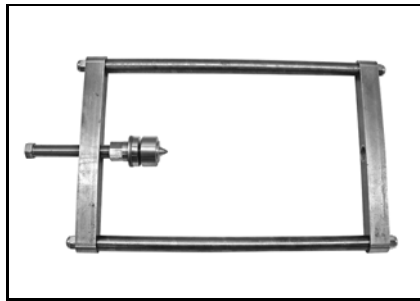


Magnet socket

P/N 529 036 178

Recommended

Roadster



Pitman arm jig

P/N 529 036 225

Recommended

Roadster, ATV



Pitman arm pusher

P/N 529 036 226

Recommended

ATV, Roadster

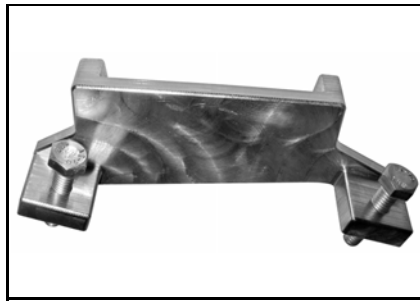


Pitman arm puller

P/N 529 036 227

Recommended

ATV, Roadster

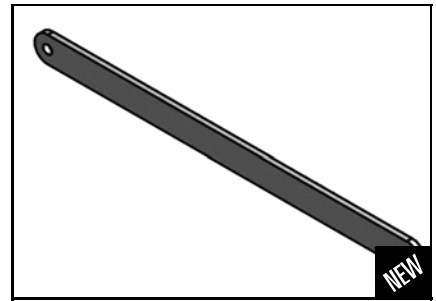


Pitman arm locking tool

P/N 529 036 228

**Mandatory**

Roadster



Front wheel alignment tool

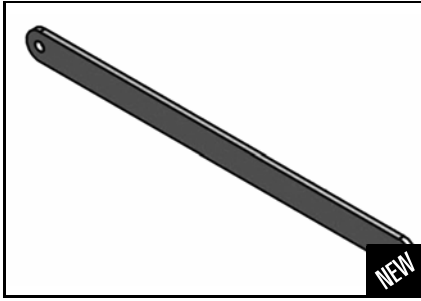
P/N 529 036 263

Recommended

GS/RS/RT 2008 to 2012  
2 bars needed for procedure



## Steering



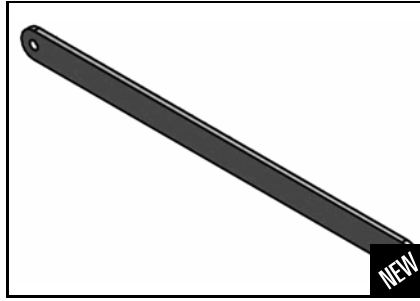
Alignment bar

P/N 529 036 265

**Mandatory**

RS/ST 2013

2 bars needed for procedure



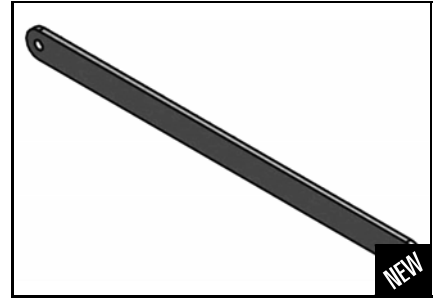
Alignment bar

P/N 529 036 266

**Mandatory**

RT 2013

2 bars needed for procedure



Front wheel alignment tools kit

P/N 529 036 267

Recommended

Roadster



Magnetic lever with laser

P/N **magnetic\_lazer**

Recommended

Roadster

JOBMATE or equivalent

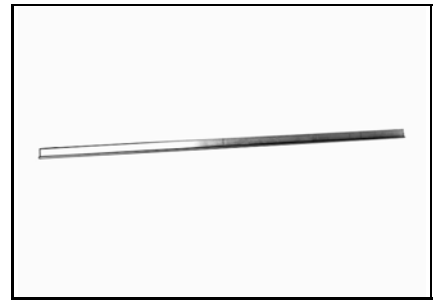


Caster angle protractor

P/N **Protractor Dig**

Recommended

Roadster



Alignment bar

P/N **Straight Bar 6'**

Recommended

Roadster

Use 6 feet aluminum angle bar

## Suspension

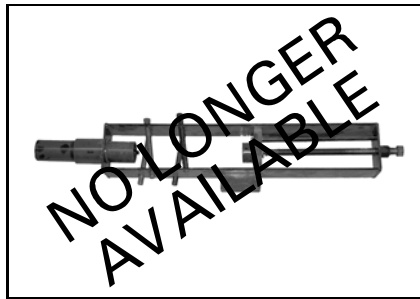


Ball joint installer

P/N 529 035 975

Recommended

REV-XP, Roadster



Spring remover

P/N 529 036 007

Recommended

All models

Replace by 529036184



Ball joint remover support

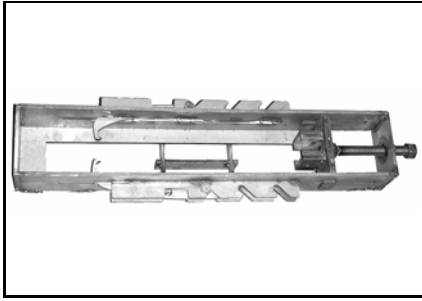
P/N 529 036 121

Recommended

REV, ATV, TSS, roadster

Replaces 529035873

## Suspension



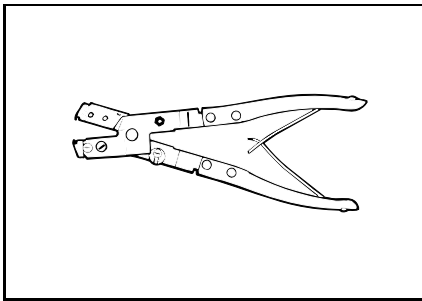
Spring compressor

**P/N 529 036 184** Recommended

All models

To remove coil spring from shock.

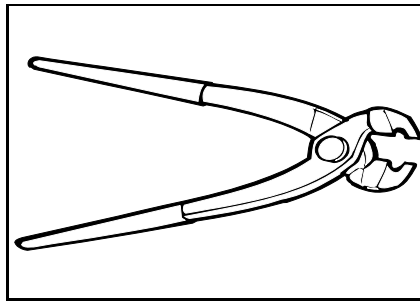
## Various



Oetiker pliers

**P/N 295 000 069** Recommended

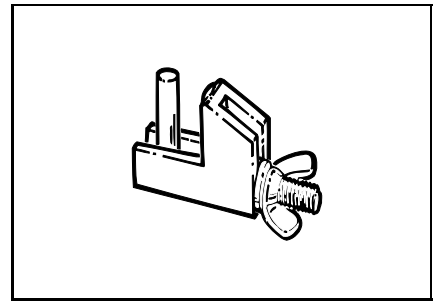
All models



Oetiker pliers

**P/N 295 000 070** Recommended

All models



Small hose pincher

**P/N 295 000 076** Recommended

All models

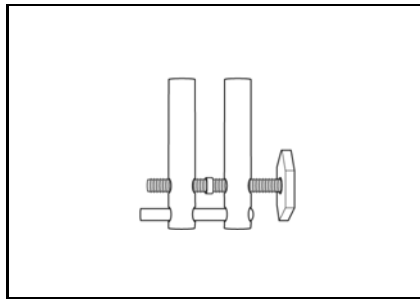


Handle

**P/N 420 877 650** Recommended

All models

Can be used with many types of pushers.



Large hose pincher

**P/N 529 032 500** Recommended

All models

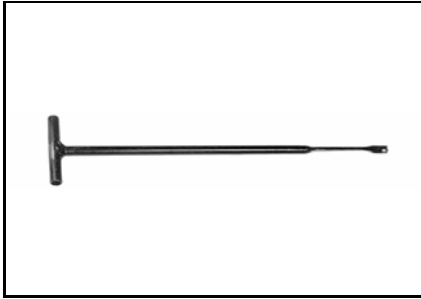


Cable luber

**P/N 529 035 738** Recommended

All cables

## Various



Spring installer/remover

**P/N 529 035 983**

Recommended

All models



Blind hole bearing puller set

**P/N 529 036 117**

Recommended

All models

Replaced by 529036056



Storage compartment body

**P/N 529 036 249**

Recommended

roadster

# Index

## Tool Part Numbers ... Page

**These tools are mandatory**

295000069 .....	10	529036124 .....	3
295000070 .....	10	<b>529036133 .....</b>	<b>7</b>
295000076 .....	10	<b>529036142 .....</b>	<b>7</b>
<b>420277010 .....</b>	<b>5</b>	<b>529036144 .....</b>	<b>7</b>
420877650 .....	10	<b>529036166 .....</b>	<b>5</b>
529014500 .....	5	529036174 .....	5
529021800 .....	2	529036175 .....	5
529032500 .....	10	529036178 .....	8
<b>529035652 .....</b>	<b>6</b>	529036181 .....	3
529035661 .....	2	529036184 .....	10
529035687 .....	2	529036199 .....	5
<b>529035709 .....</b>	<b>4</b>	529036223 .....	5
<b>529035714 .....</b>	<b>4</b>	529036225 .....	8
529035724 .....	2	529036226 .....	8
529035738 .....	10	529036227 .....	8
529035757 .....	4	<b>529036228 .....</b>	<b>8</b>
529035766 .....	2	<b>529036246 .....</b>	<b>7</b>
529035868 .....	5	529036249 .....	11
529035880 .....	2	<b>529036258 .....</b>	<b>7</b>
529035933 .....	2	529036263 .....	8
529035975 .....	9	<b>529036265 .....</b>	<b>9</b>
529035983 .....	11	<b>529036266 .....</b>	<b>9</b>
529035991 .....	4	529036267 .....	9
529036007 .....	9	<b>710000851 .....</b>	<b>5</b>
<b>529036018 .....</b>	<b>5</b>	AMP 755430-2 .....	6
<b>529036023 .....</b>	<b>4</b>	carbtune pro .....	4
529036063 .....	5	magnetic_lazer .....	9
529036069 .....	2	Motion_Pro .....	4
529036070 .....	6	Protractor Dig .....	9
529036071 .....	6	Snap-on RC 980 .....	3
529036072 .....	2	Snap-on TA362 .....	3
529036073 .....	2	Snap-on YA 8230 .....	3
529036074 .....	2	SRP3 .....	7
529036075 .....	2	Straight Bar 6' .....	9
529036088 .....	6	YA105 .....	7
529036092 .....	3		
529036093 .....	3		
529036094 .....	3		
529036095 .....	7		
529036096 .....	7		
<b>529036097 .....</b>	<b>3</b>		
<b>529036098 .....</b>	<b>3</b>		
<b>529036106 .....</b>	<b>5</b>		
<b>529036113 .....</b>	<b>7</b>		
<b>529036114 .....</b>	<b>3</b>		
<b>529036115 .....</b>	<b>7</b>		
529036117 .....	11		
<b>529036119 .....</b>	<b>8</b>		
529036121 .....	9		
529036123 .....	3		