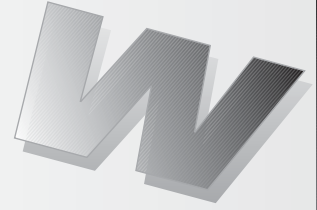


can-am



QUALITY

**ROADSTER
WARRANTY
Bulletin**



► **NOTE: Repair only if described symptoms exist or are noticed.**

Campaign no.: 2010-0011
2011-0009

August 1st, 2011

Subject: **Spyder™ RT – Rear Top Storage
Compartment Cover Adjustment**

No. **2011-8**

YEAR	MODEL	MODEL NUMBER	SERIAL NUMBER
2010	Spyder RT	All	All
2011			

PROBLEM

On some Spyder RT's, the rear top storage compartment cover may be hard to close.

SOLUTION

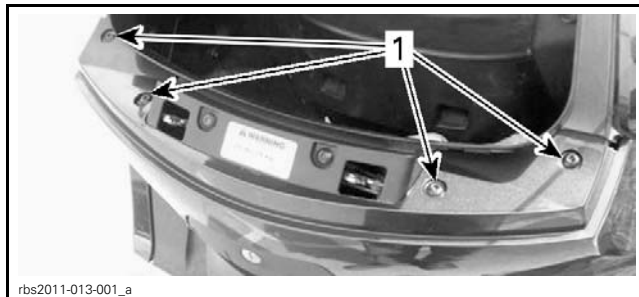
Adjust the rear top storage compartment cover as per the following procedure.

PROCEDURE

Top Storage Compartment Adjustment

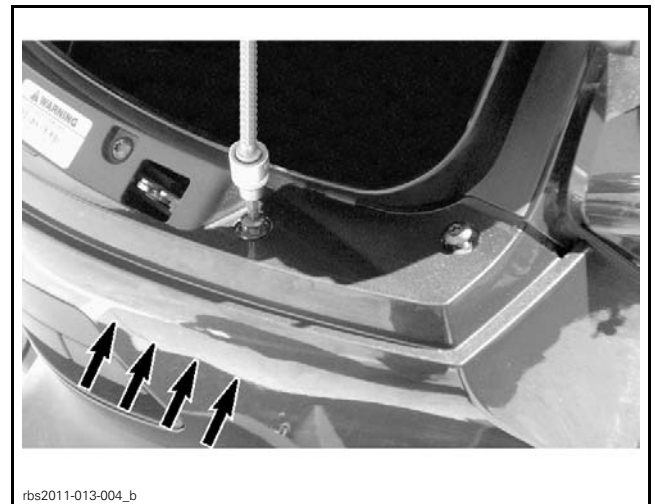
NOTE: Two people are needed to perform this adjustment procedure.

1. Open cover.
2. Loosen the four screws retaining the rear panel.



1. Retaining screws

3. Have an assistant to push the rear panel forward while you torque the four previously loosened screws to specification.



APPLY PRESSURE ON REAR PANEL WHILE TIGHTENING SCREW

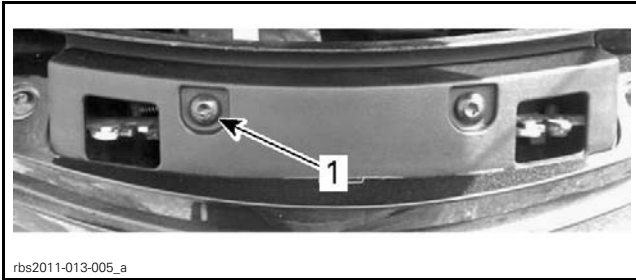
TIGHTENING TORQUE	
Rear panel retaining screw	3.5 N•m (31 lbf•in)

Verify force required to close top cover.
If force required is higher than customer preference, proceed to next step and adjust cover latch.

Cover Latch Adjustment

1. Remove the first retaining screw securing the latch mechanism.

NOTICE To avoid latch falling away from its mounting area, remove one screw at a time. Loosen the second screw slightly to allow the latch to move away from its mounting area so it will not be damaged when enlarging the first hole in the panel.



rbs2011-013-005_a

1. Remove this screw ONLY

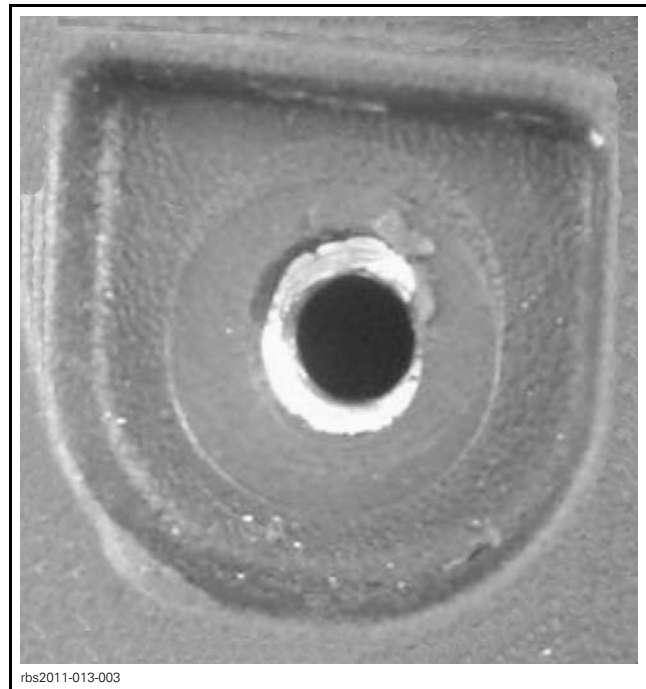
NOTICE On later production models, the slots have been directly molded in the panel, do the step 2 ONLY if the panel is not factory slotted.

2. Using a small rotary tool, enlarge the empty panel screw hole upward to make it oblong for more adjustment.

SPECIFICATION	
Maximum enlargement size	2 mm (5/64 in)

NOTICE Do not enlarge more than 2 mm (5/64 in) otherwise the head of the screw will come in contact with the side of mechanism.

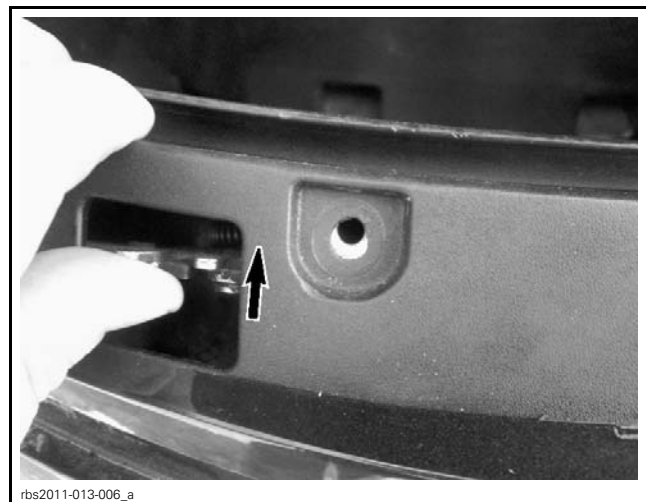
NOTICE Be careful not to grind the metallic section as this will damage the threads.



rbs2011-013-003

TYPICAL - AFTER MODIFICATION

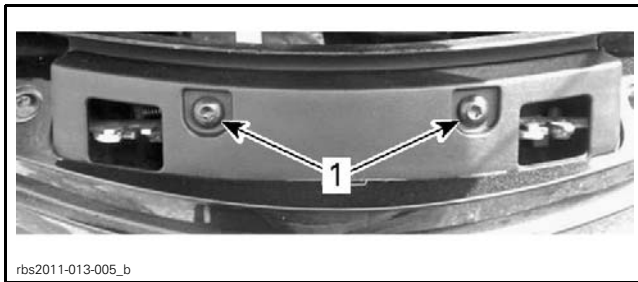
- Loosely install first latch screw.
- NOTE: Do not tighten screw at this time.
- Repeat procedure for the other side.
 - While holding the latch mechanism up lightly tighten both retaining screws.
 - Verify that the cover closes properly and is contacting the seal all the way around. If necessary move latch up or down in slotted holes to achieve proper fit.



rbs2011-013-006_a

SCREW NOT SHOWN FOR CLARITY - PUSH ON LATCH MECHANISM UP

- When proper fit is achieved, tighten both latch mechanism retaining screws to specification.



rbs2011-013-005_b

1. Latch mechanism retaining screws

TIGHTENING TORQUE	
Latch mechanism retaining screw	2.5 N•m (22 lbf•in)

WARRANTY

Submit a warranty claim for all affected vehicles using the following information:

CAMPAIGN NUMBER	2010-0011
Claim type	Campaign claim
Action	Repair
Flat Rate Time	0.3 hour
Expiry Date	December 31 th , 2013

CAMPAIGN NUMBER	2011-0009
Claim type	Campaign claim
Action	Repair
Flat Rate Time	0.3 hour
Expiry Date	December 31 th , 2013

Click in the REPAIR BOX while completing your claim on BOSSWeb.

REPAIR	✓
---------------	---

For claiming procedure, refer to the *DEALER/DISTRIBUTOR WARRANTY GUIDE*.