

---

# BODY

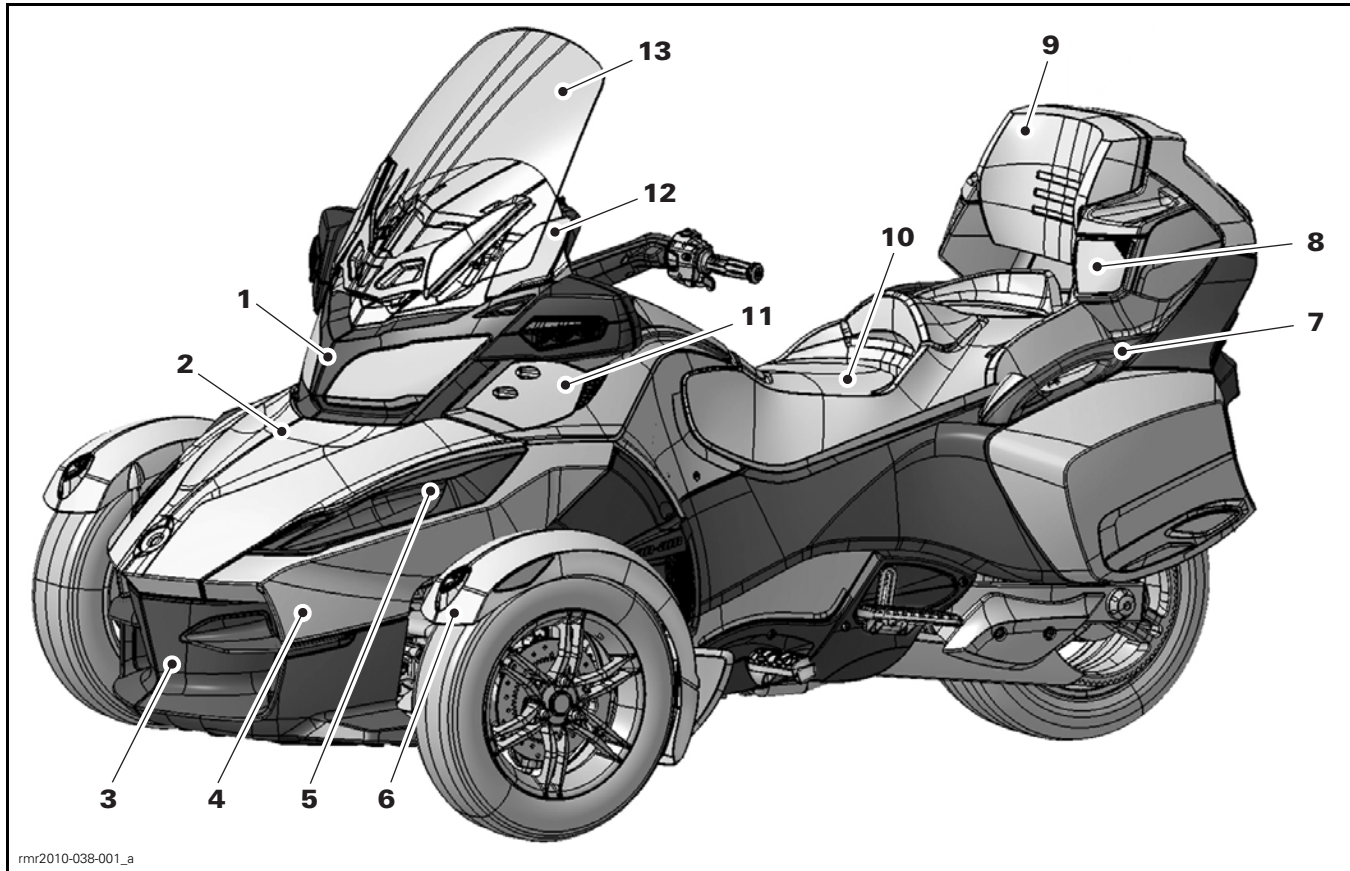
## SERVICE TOOLS

<b>Description</b>	<b>Part Number</b>	<b>Page</b>
FLUKE 115 MULTIMETER .....	529 035 868 .....	29

## SERVICE PRODUCTS

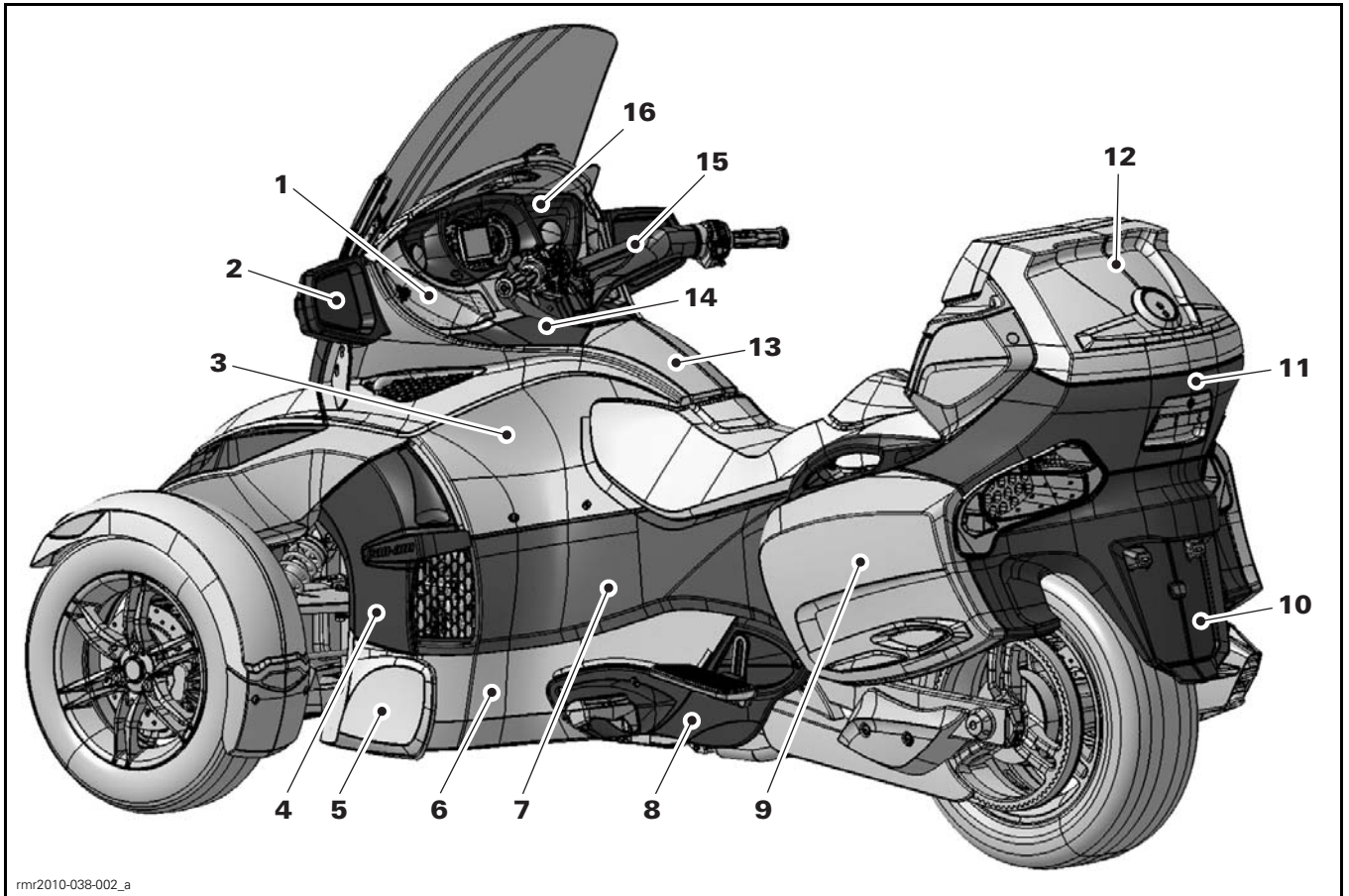
<b>Description</b>	<b>Part Number</b>	<b>Page</b>
BRP PLASTIC & VINYL CLEANER .....	413 711 200 .....	11

BODY PARTS NOMENCLATURE (VEHICLE FRONT VIEW)



- 1. Front fascia
- 2. Front storage compartment cover
- 3. Bumper cover
- 4. Front panel
- 5. Air duct (or light trim)
- 6. Front fender
- 7. Passenger handle
- 8. Rear speaker grille (option package)
- 9. Passenger backrest
- 10. Seat
- 11. Lower wind deflector
- 12. Upper wind deflector
- 13. Windshield

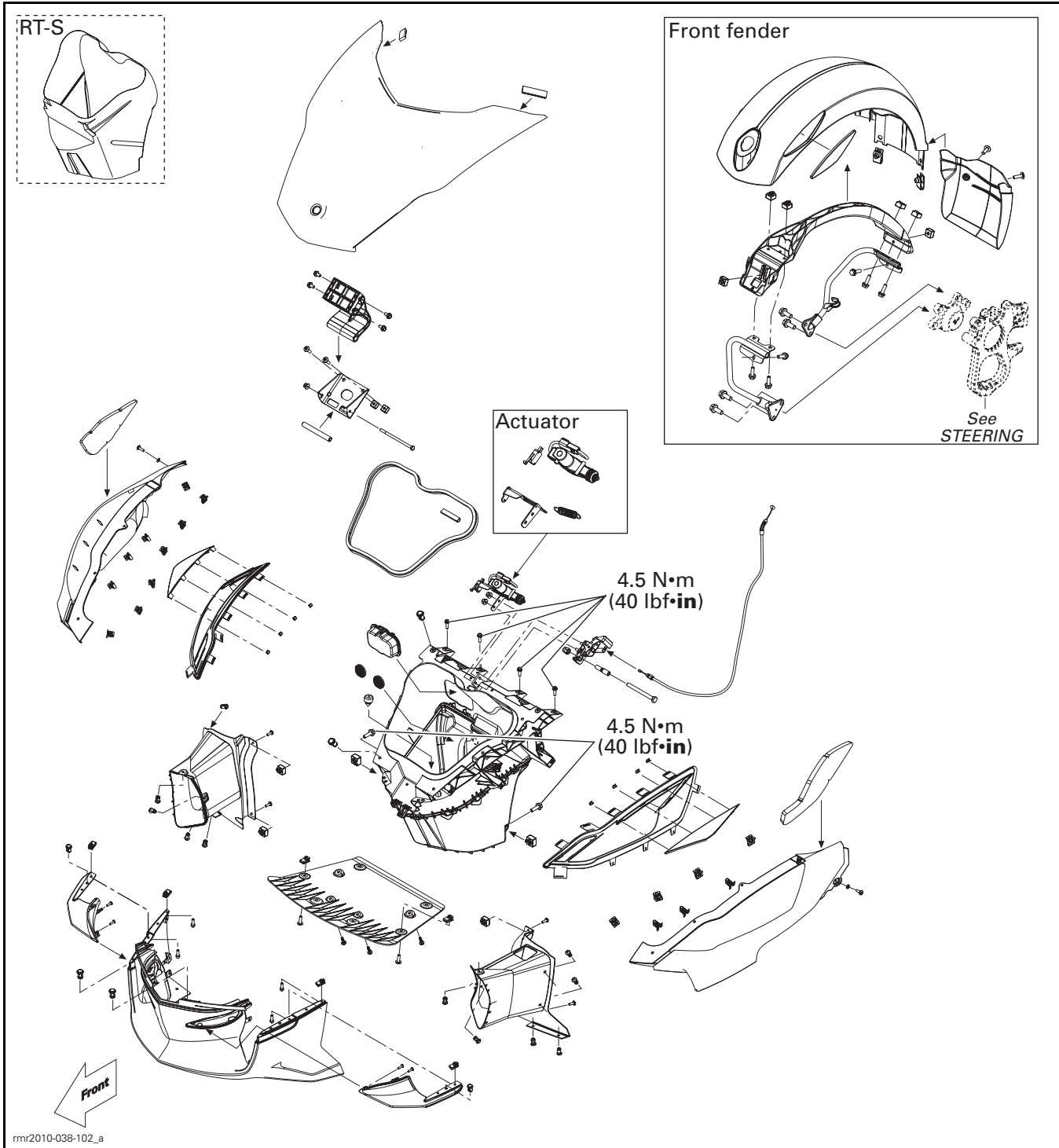
## BODY PARTS NOMENCLATURE (VEHICLE REAR VIEW)



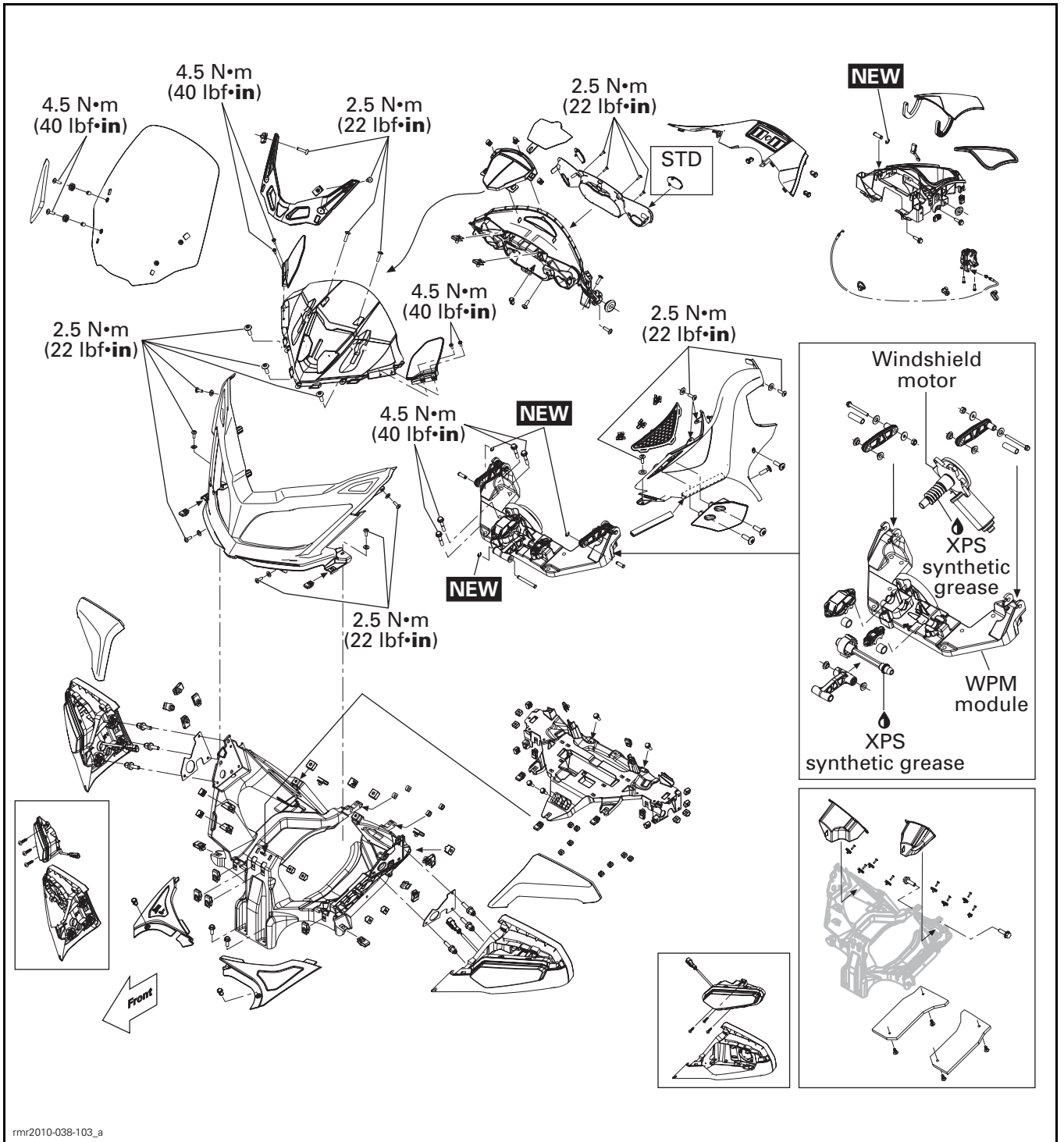
rnr2010-038-002\_a

1. Front speaker grille (option package)
2. Mirror
3. Top side panel
4. Middle side panel
5. Bottom front side panel
6. Bottom rear side panel
7. Rear side panel
8. Footrest support
9. Side storage compartment cover
10. Rear fender
11. Rear panel
12. Top storage compartment cover
13. Glove box
14. Central panel
15. Ignition switch cover
16. Gauge trim

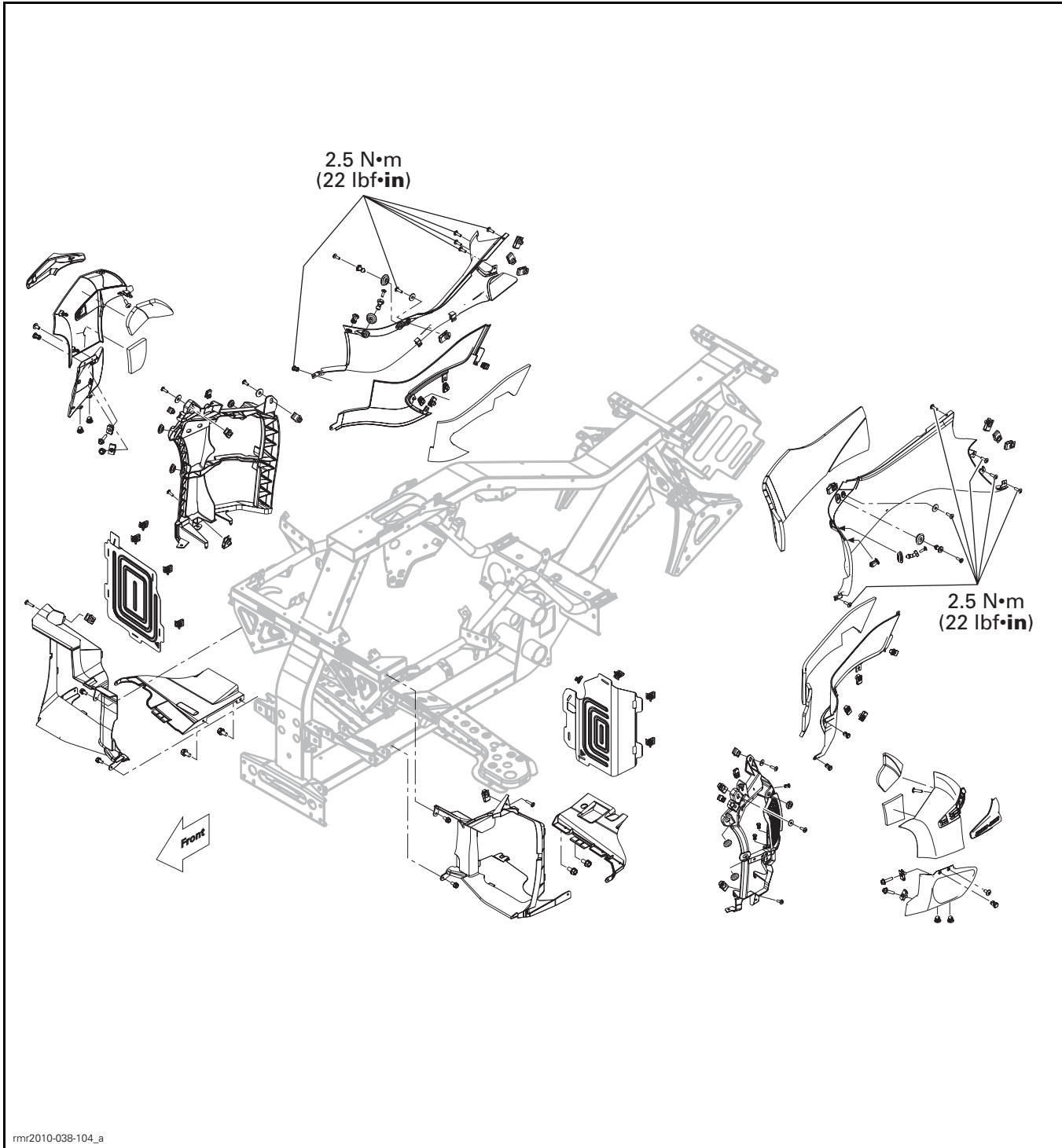
# FRONT CARGO MODULE



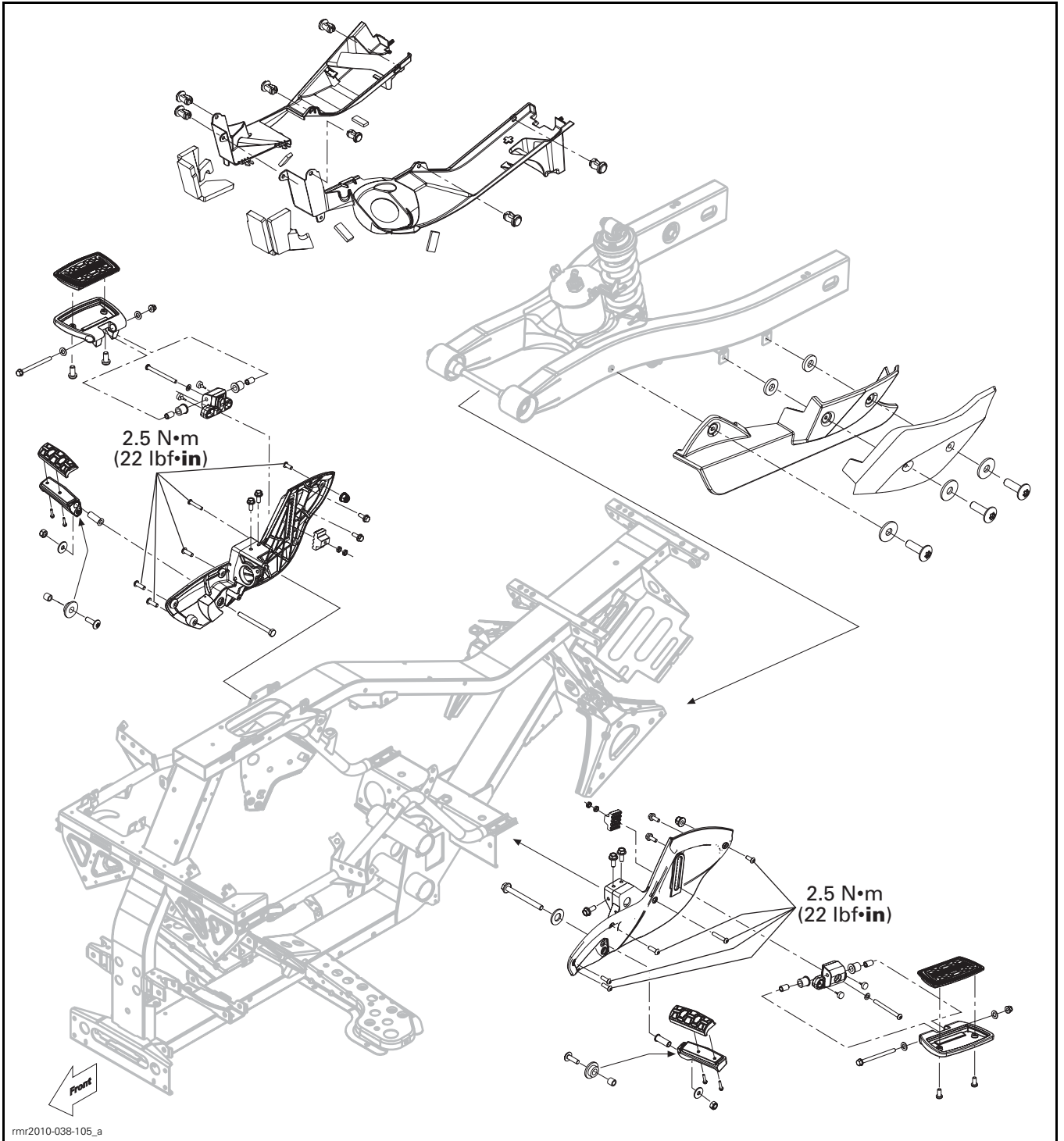
# CONSOLE MODULE



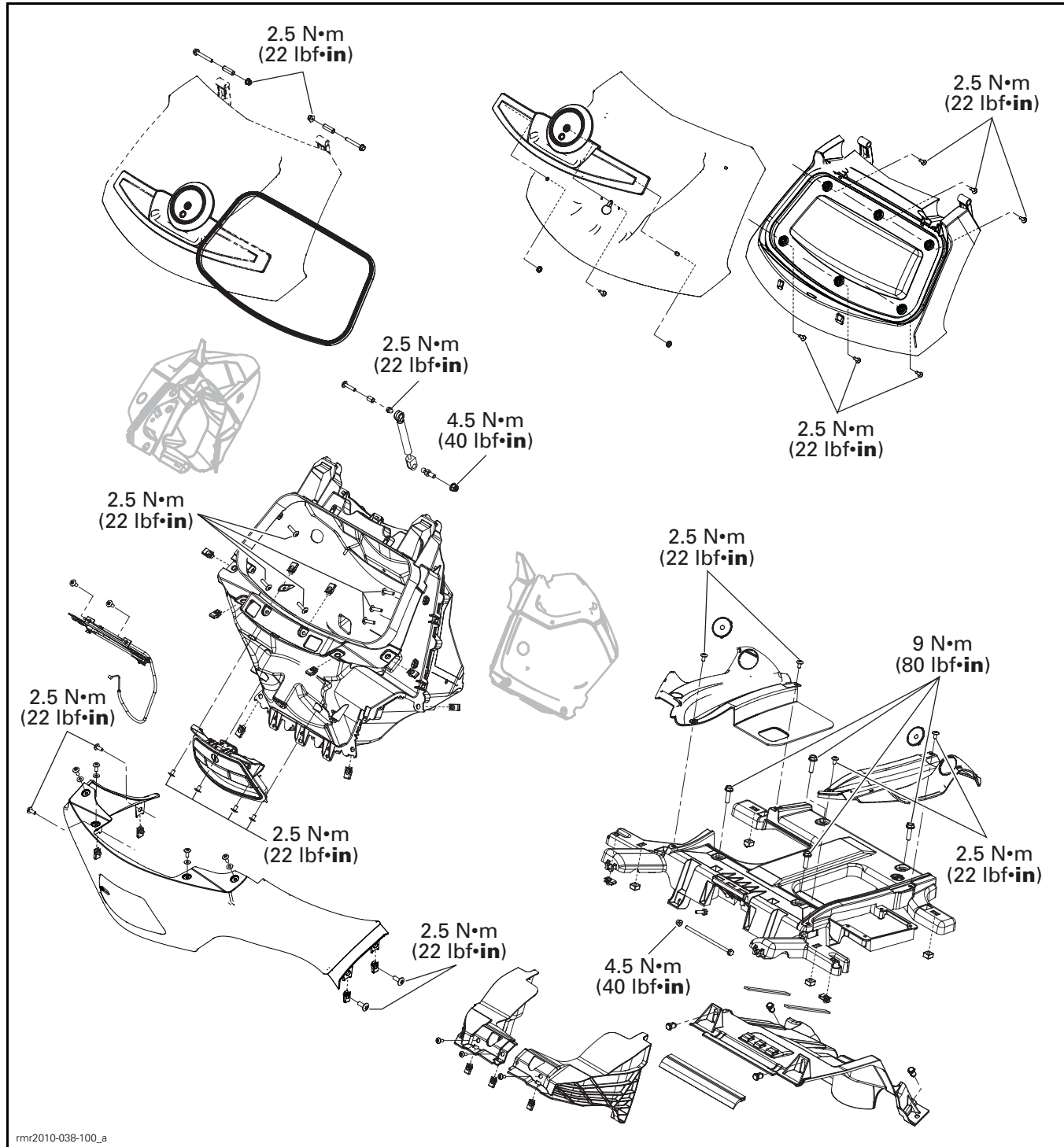
# LATERAL BODY PARTS



# LATERAL BODY PARTS



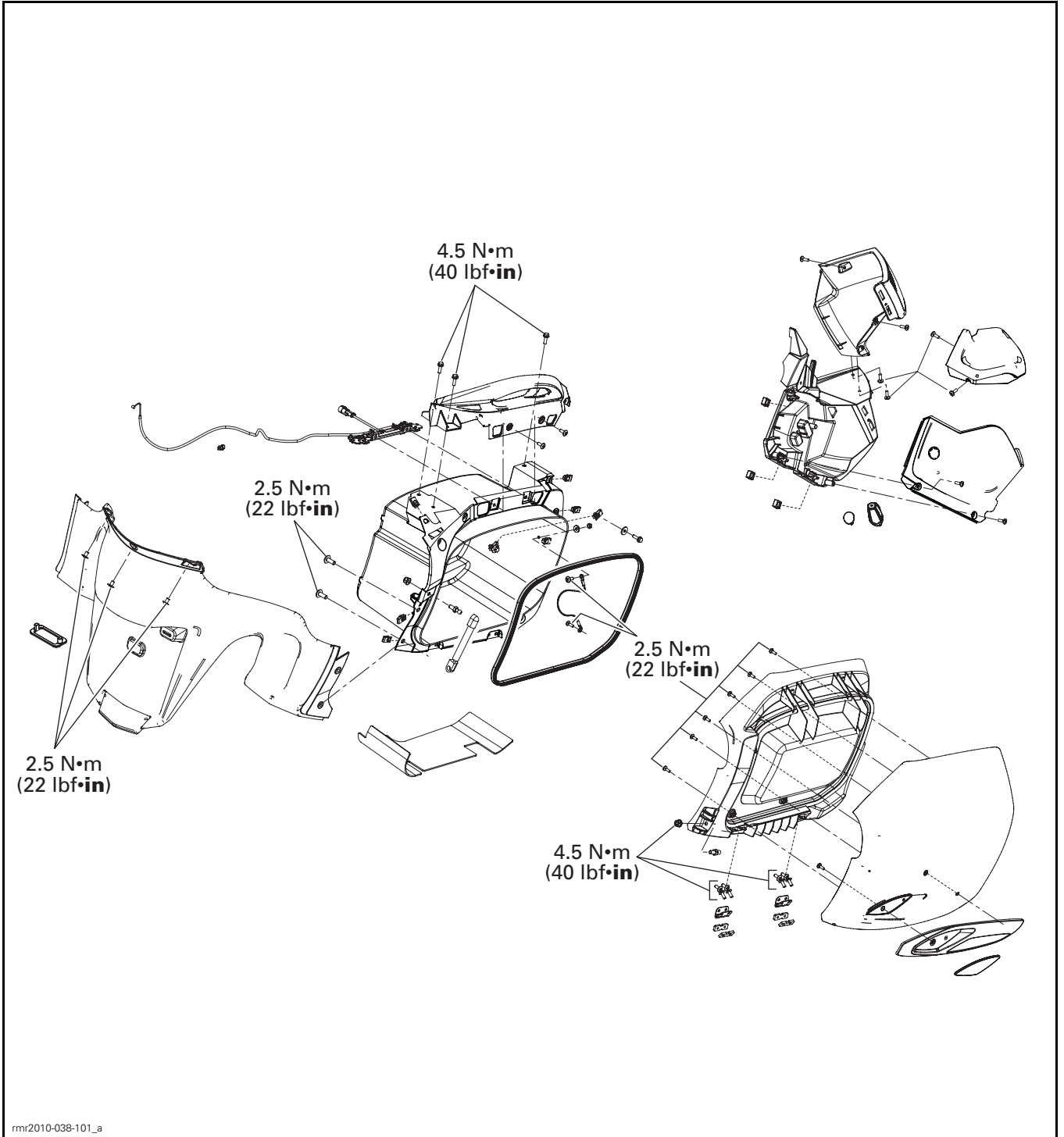
# REAR CARGO MODULE (REAR VIEW)



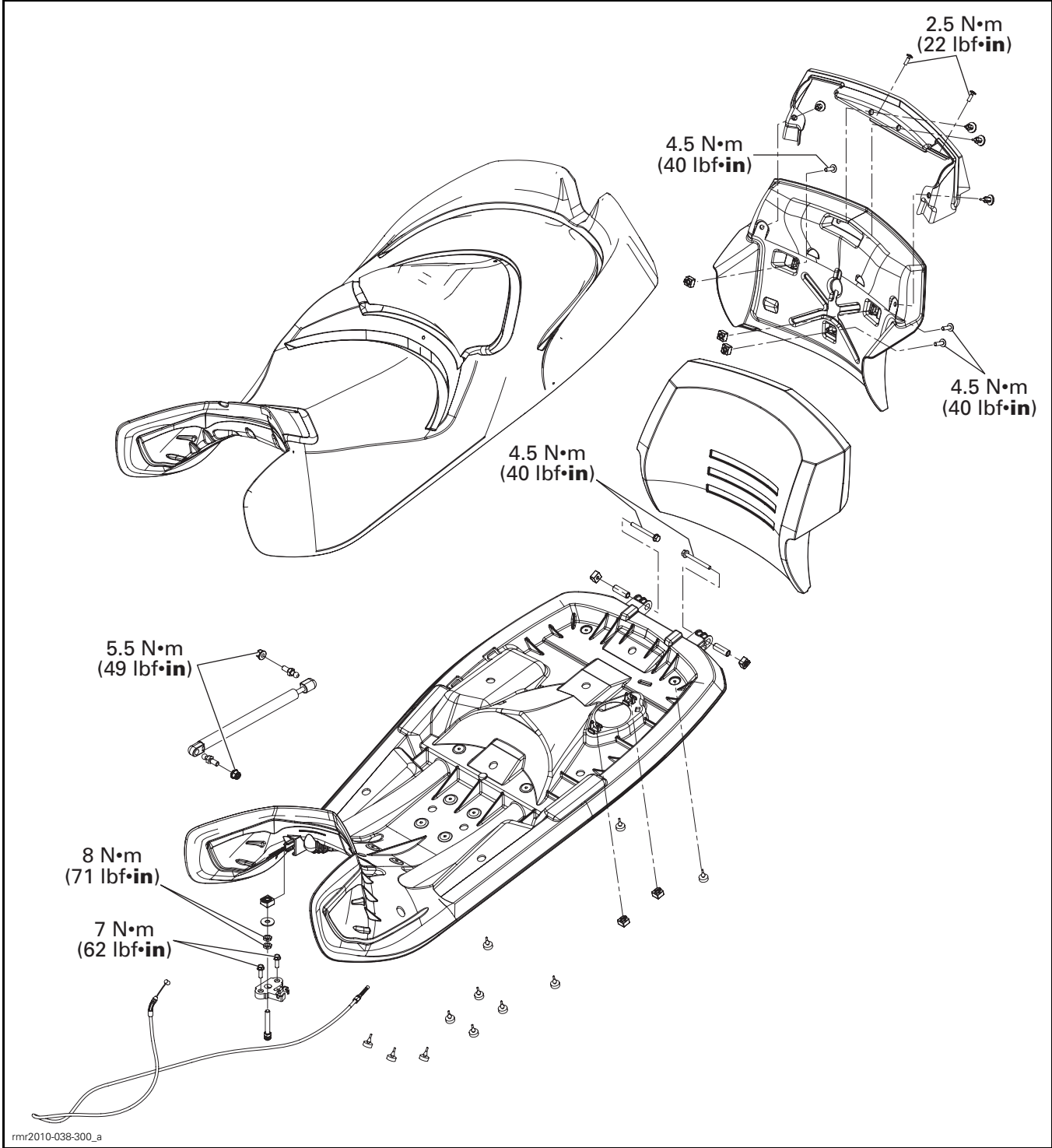
rm2010-038-100\_a



REAR CARGO MODULE (RH SIDE VIEW)



# SEAT



## GENERAL

During assembly/installation, use the torque values and service products as in the exploded views.

Clean threads before applying a threadlocker. Refer to *SELF-LOCKING FASTENERS* and *LOCTITE APPLICATION* at the beginning of this manual for complete procedure.

### WARNING

Torque wrench tightening specifications must be strictly adhered to. Locking devices (e.g.: locking tabs, elastic stop nuts, cotter pins, etc.) must be replaced.

**NOTICE** Hoses, cables and locking ties removed during a procedure must be reinstalled as per factory standards.

**NOTICE** Be careful when tightening plastic panels. Any deformation on the panel around the screw is an indication that it is too tight. Do not over torque panels in order to avoid to damage them.

**NOTE:** Install a battery charger on battery terminals (under seat) for any tests that involve a prolonged *KEY ON* period. If battery voltage gets too low, some accessories are shut off by the ECM.

## VEHICLE CARE

### Vehicle Cleaning

To clean the vehicle, do not use high-pressure washers (like the ones found in car washes) as they may damage certain parts of the vehicle.

**NOTICE** Do not clean the windshield with alkaline or acid cleaner, gasoline or solvent to avoid windshield damage.

To clean the vehicle:

- Rinse the vehicle thoroughly with water to remove loose dirt.
- Using a soft, clean cloth, wash the vehicle with water mixed with a mild detergent, such as soap specially formulated for motorcycles or automobiles.
- While washing the vehicle, check for grease or oil. You can use BRP PLASTIC & VINYL CLEANER (P/N 413 711 200) or a mild automotive degreaser. Thoroughly follow the manufacturer's instructions.
- Dry the vehicle with a chamois or a soft towel.

### Vehicle Waxing

Apply only nonabrasive wax safe for clearcoat paints on glossy finishes.

Avoid applying wax on matte surfaces.

**NOTICE** Do not polish windshield with any plastic cleaner/polisher.

### WARNING

Do not apply a vinyl or plastic protector on the seat as the surface will become slippery and the operator or the passenger may slip off the vehicle.

## PROCEDURES

### DECALS

#### Decal Removal

Using a heat gun (low heat setting) warm up one end of decal for a few seconds until decal can roll off when rubbing with your finger.

Pull decal slowly and when necessary apply more heat to ease removal on the area that has to be peeled off.

If decal tears while pulling off, it has to be heated for a few seconds longer. If decal tends to stretch while pulling off, stop heating and wait a few seconds to let it cool, then peel it off.

#### Decal Installation

Using isopropyl alcohol, clean the surface and dry thoroughly.

Apply a soapy water solution to new decal and carefully position it. Using a sponge or a squeegee, remove the air bubbles and water working from the center toward the edges. Allow to air dry.

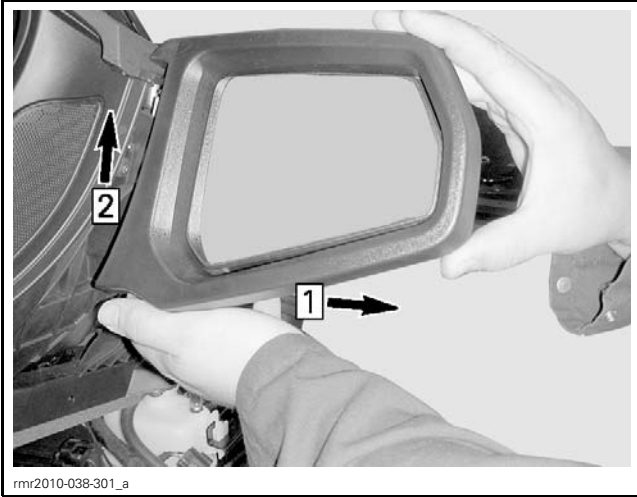
**NOTICE** Do not apply isopropyl alcohol or solvent directly on decals.

### MIRRORS

**NOTE:** The procedures are the same for LH and RH mirrors.

#### Mirror Removal

1. Pull lower part of mirror toward the outside to unlock it.
2. Slide mirror upwards to unhook it from upper slot.



Step 1: Pull toward the outside  
Step 2: Slide upwards

### Mirror Installation

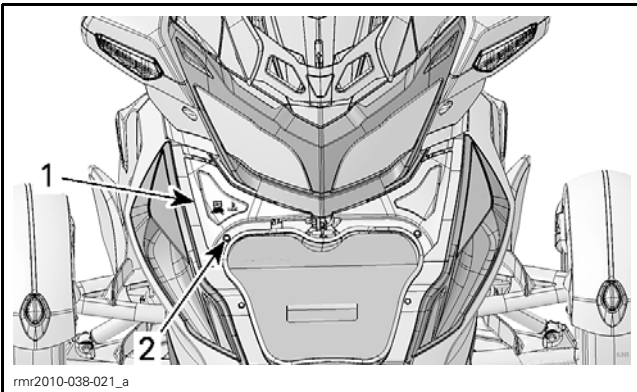
The installation is the reverse of the removal procedure.

### SERVICE COVERS

**NOTE:** The procedures are the same for LH and RH service covers.

#### Service Cover Removal

1. Open front storage compartment cover.
2. Remove plastic rivet from service cover.



1. RH service cover  
2. Plastic rivet

3. Lift lower portion of service cover then pull it toward the front.

**NOTE:** The installation is the reverse of the removal procedure.

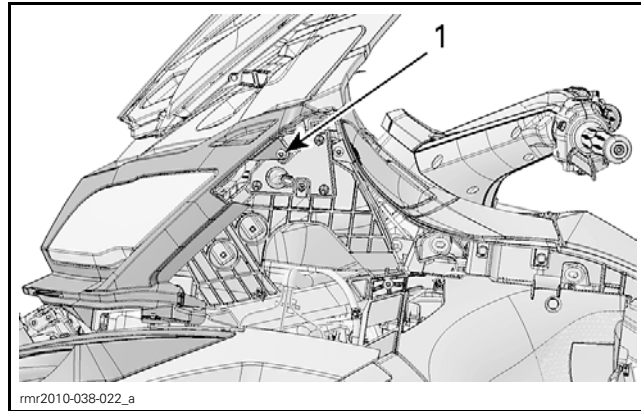
#### Service Cover Installation

The installation is the reverse of the removal procedure.

### FRONT FASCIA

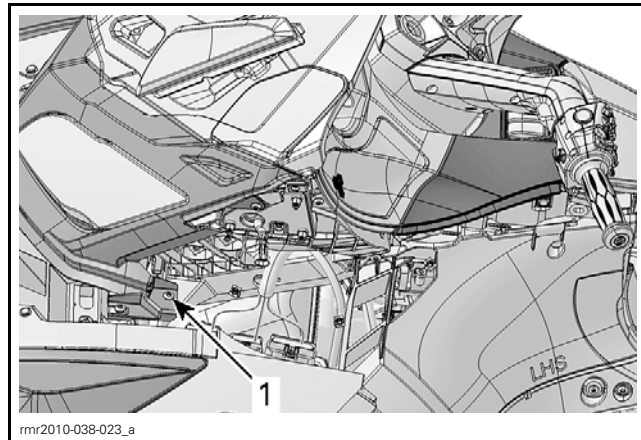
#### Front Fascia Removal

1. Remove mirrors. Refer to *MIRRORS* in this subsection.
2. Remove service covers. Refer to *SERVICE COVERS* in this subsection.
3. Remove middle side panels. Refer to *MIDDLE SIDE PANELS* in this subsection.
4. Remove top side panels. Refer to *TOP SIDE PANELS* in this subsection.
5. Remove upper retaining screws from front fascia.



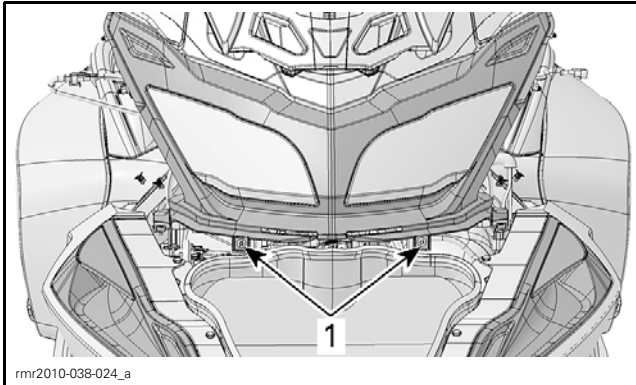
1. Upper retaining screw

6. Remove middle retaining screws from front fascia.



1. Middle retaining screw

7. Remove lower retaining screws and washers from front fascia.



1. Lower retaining screw

8. Remove front fascia from vehicle.

### Front Fascia Installation

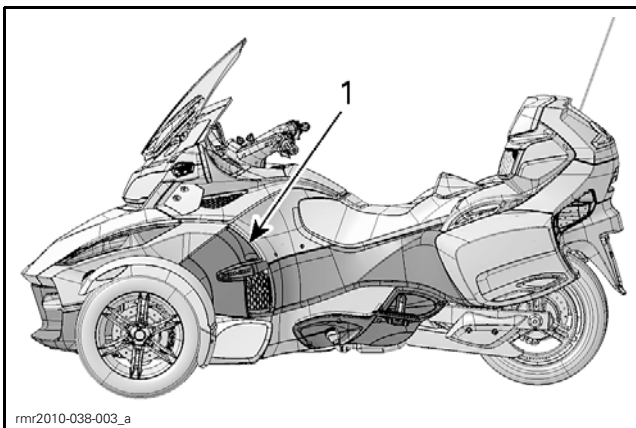
The installation is the reverse of the removal procedure. However, pay attention to the following. Torque front fascia retaining screws to 2.5 N•m (22 lbf•in).

### MIDDLE SIDE PANELS

**NOTE:** The procedures are the same for LH and RH middle side panels.

#### Middle Side Panel Removal

1. Pull panel toward the outside to remove it from grommets at the front then unhook the rear.



1. Middle side panel

#### Middle Side Panel Installation

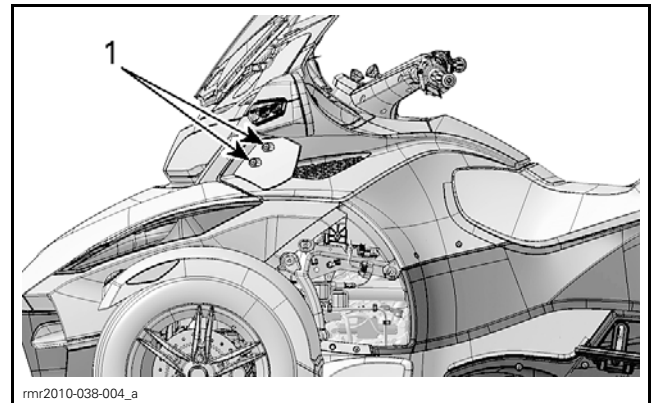
The installation is the reverse of the removal procedure.

### TOP SIDE PANELS

**NOTE:** The procedures are the same for LH and RH service covers.

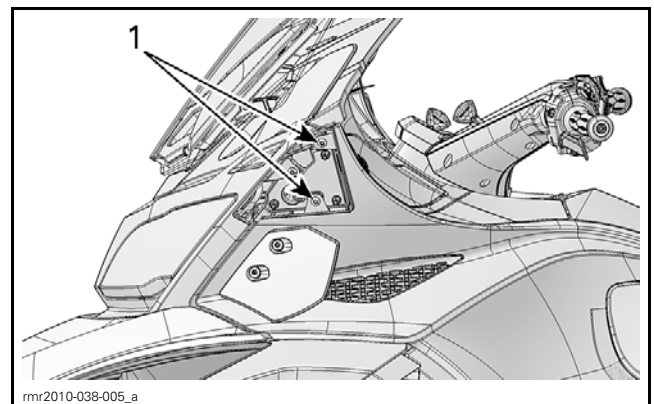
#### Top Side Panel Removal

1. Lift seat.
2. Open front storage compartment.
3. Remove middle side panel. Refer to *MIDDLE SIDE PANELS* in this subsection.
4. Remove retaining screws from lower wind deflector.



1. Retaining screws of wind deflector

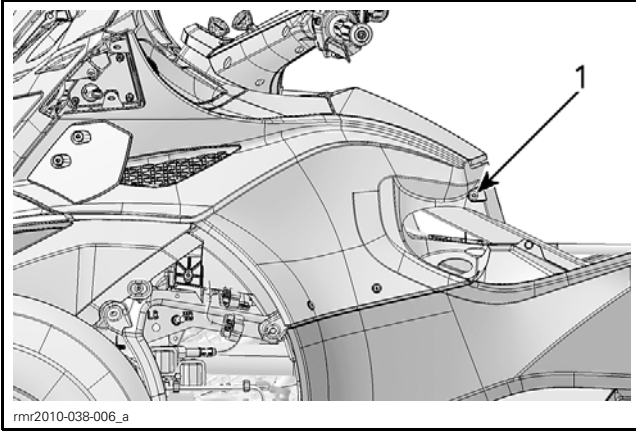
5. Remove mirror. Refer to *MIRRORS* in this subsection.
6. Remove upper retaining screws from top side panel.



1. Upper retaining screws

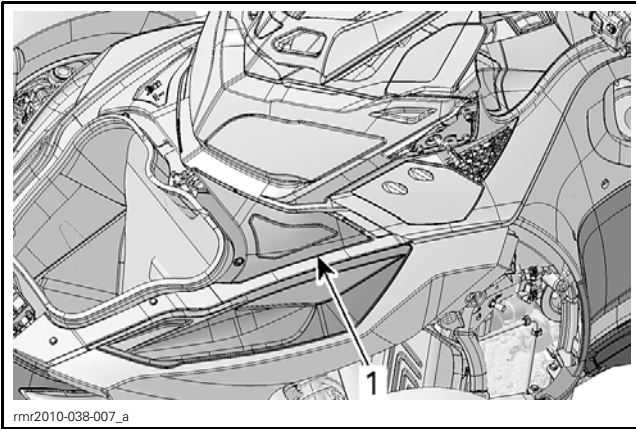
7. Remove rear retaining screw from top side panel.

## Subsection XX (BODY)



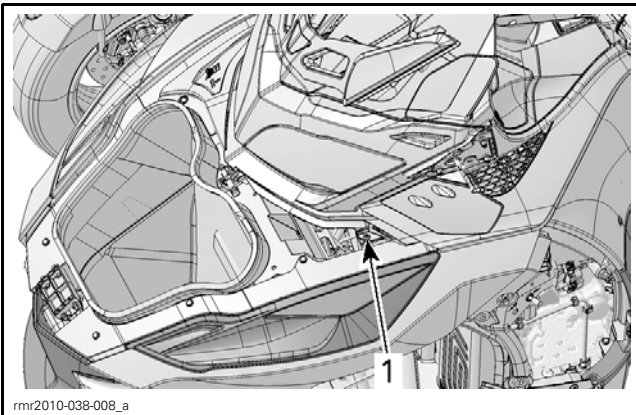
1. Rear retaining screw

8. Remove LH service cover. Refer to *SERVICE COVERS* in this subsection.



1. LH service cover

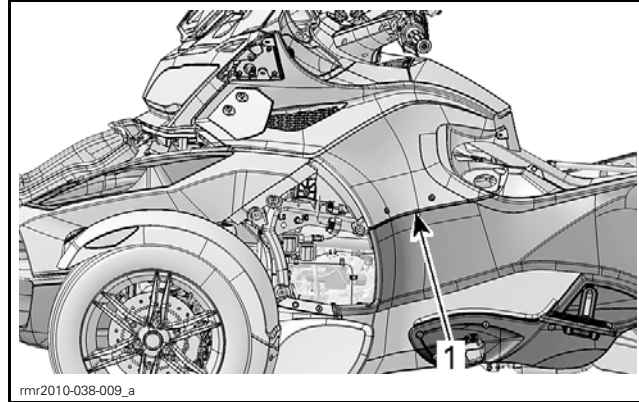
9. Remove front retaining screw from top side panel.



1. Front retaining screw

10. Remove lower retaining screws of top side panel.

11. Remove top side panel by lifting it upwards.



1. Top side panel

### Top Side Panel Installation

The installation is the reverse of the removal procedure. However, pay attention to the following.

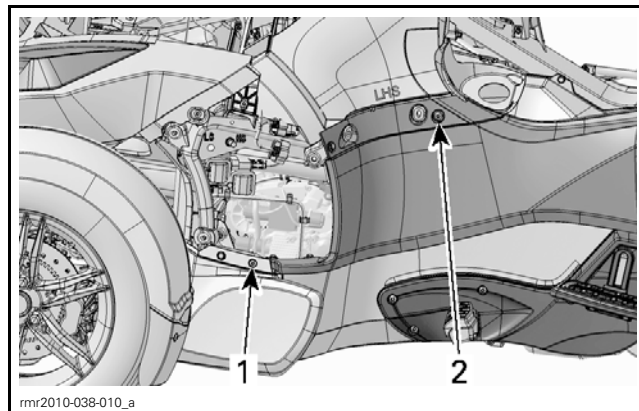
Torque top side panel retaining screws to 2.5 N•m (22 lbf•in).

### REAR SIDE PANELS

**NOTE:** The procedures are the same for LH and RH rear side panels.

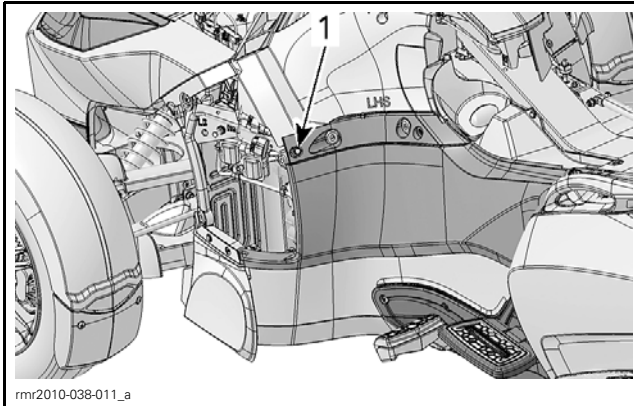
#### Rear Side Panel Removal

1. Remove middle side panel. Refer to *MIDDLE SIDE PANELS* in this subsection.
2. Remove top side panel. Refer to *TOP SIDE PANELS* in this subsection.
3. Remove front retaining screw of rear side panel.
4. Remove upper retaining screw and washer from rear side panel.



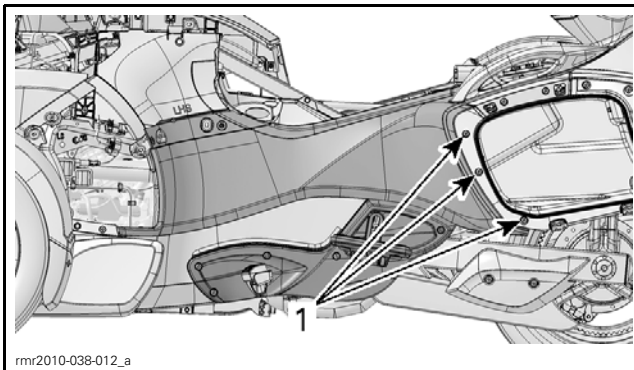
1. Front retaining screw  
2. Upper retaining screw

5. Remove front plastic rivet from rear side panel.



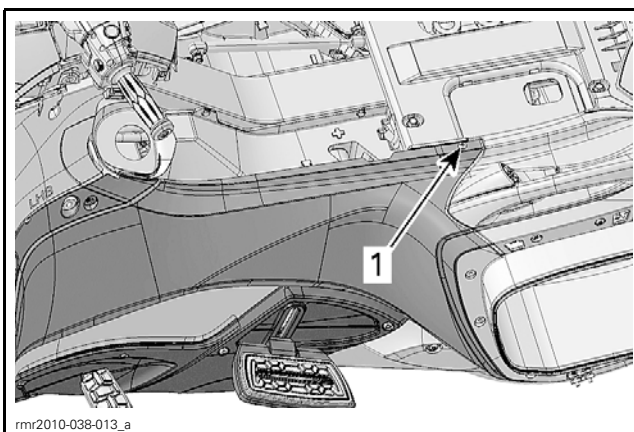
1. Front plastic rivet

6. Open side storage compartment cover.
7. Remove rear retaining screws from rear side panel.



1. Rear retaining screws

8. Remove top retaining screw of rear side panel.



1. Top retaining screw

9. Remove rear side panel from vehicle.

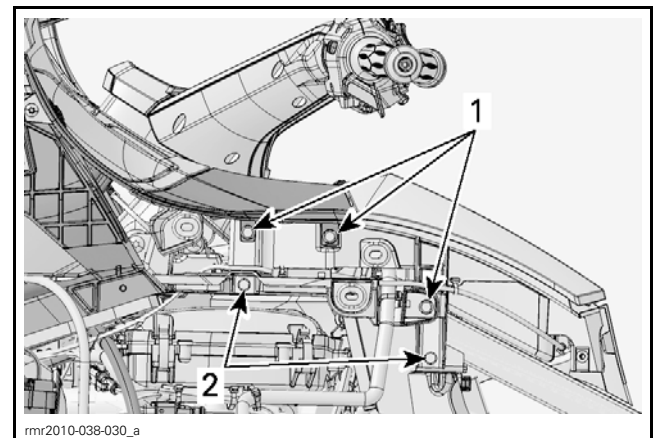
### Rear Side Panel Installation

The installation is the reverse of the removal procedure. However, pay attention to the following. Torque rear side panel retaining screws to 2.5 N•m (22 lbf•in).

## GLOVE BOX

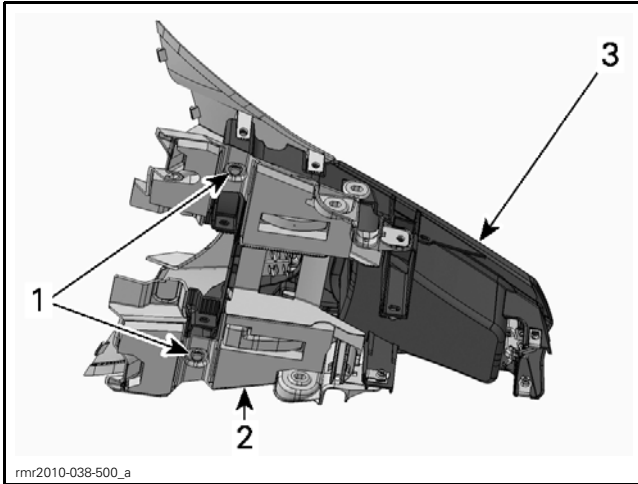
### Glove Box Removal

1. Remove middle side panel. Refer to *MIDDLE SIDE PANELS* in this subsection.
2. Remove top side panel. Refer to *TOP SIDE PANELS* in this subsection.
3. Remove rear side panel. Refer to *REAR SIDE PANELS* in this subsection.
4. Remove lateral acoustic panels. Refer to *ACOUSTIC PANELS* in this subsection.
5. Disconnect glove box cable from glove box.
6. Remove locking ties securing glove box cable.
7. Remove locking ties securing central panel switches.
8. Remove 3 plastic rivets from glove box on both side.
9. Remove 2 retaining screws from glove box on both side.



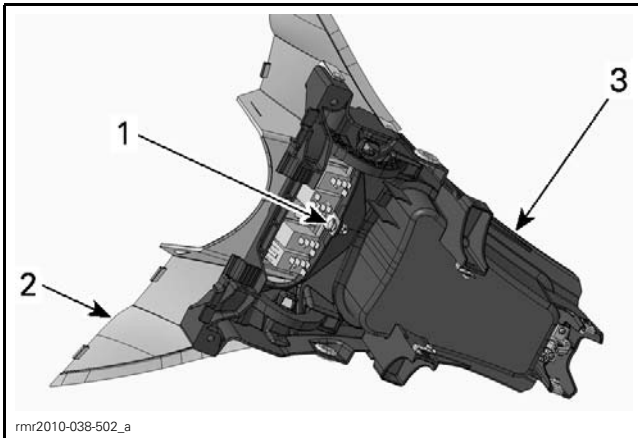
1. Plastic rivets  
2. Retaining screws

10. Slightly lift glove box.
11. Disconnect central panel switches connectors.
12. Remove glove box from vehicle by lifting it upwards.
13. Remove plastic rivets securing acoustic panel to glove box.



- TYPICAL**
1. Plastic rivets
  2. Top acoustic panel
  3. Glove box

14. Remove plastic rivet securing central panel to glove box.



1. Plastic rivet
2. Central panel
3. Glove box

15. Remove all the remaining components from glove box.

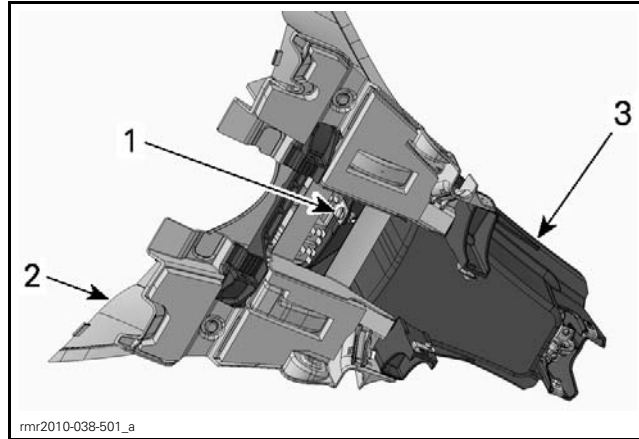
### Glove Box Installation

The installation is the reverse of the removal procedure.

## CENTRAL PANEL

### Central Panel Removal

1. Remove glove box from vehicle, refer to *GLOVE BOX REMOVAL* in this subsection.
2. Remove plastic rivet securing central panel to glove box.



1. Plastic rivet
2. Central panel
3. Glove box

3. Remove central panel from glove box.

### Central Panel Installation

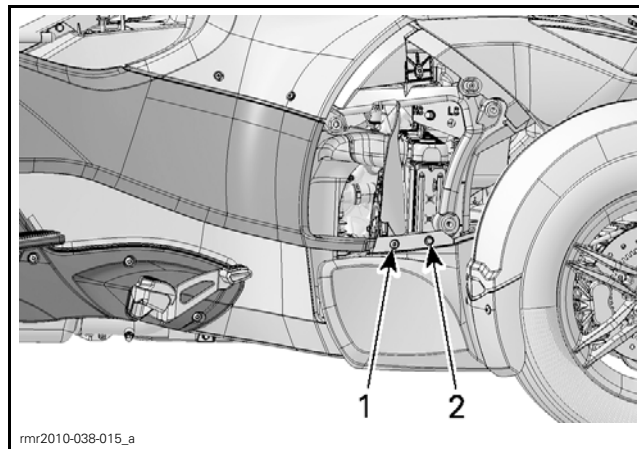
The installation is the reverse of the removal procedure.

## BOTTOM FRONT SIDE PANELS

**NOTE:** The procedures are the same for LH and RH bottom front side panels.

### Bottom Front Side Panel Removal

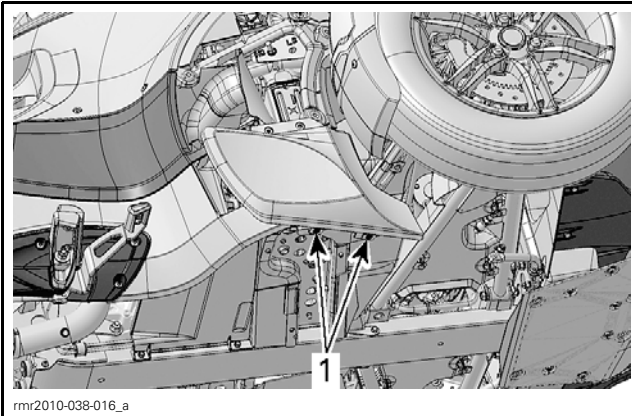
1. Remove middle side panel. Refer to *MIDDLE SIDE PANELS* in this subsection.
2. Remove upper retaining screw from panel.
3. Remove upper plastic rivet from panel.



1. Upper retaining screw
2. Upper plastic rivet

4. From underneath panel, remove lower plastic rivets.





1. Lower plastic rivets

5. Remove bottom front side panel from vehicle.

### Bottom Front Side Panel Installation

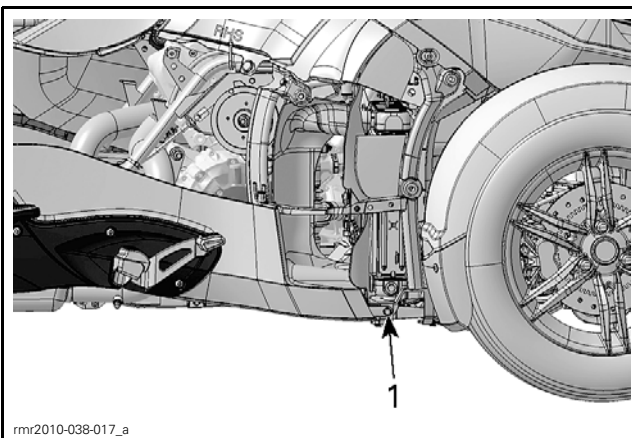
The installation is the reverse of the removal procedure.

## BOTTOM REAR SIDE PANELS

**NOTE:** The procedures are the same for LH and RH bottom rear side panels.

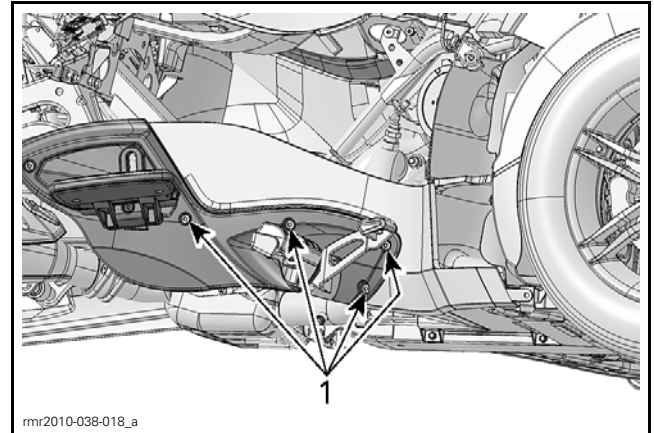
### Bottom Rear Side Panel Removal

1. Remove middle side panel. Refer to *MIDDLE SIDE PANELS* in this subsection.
2. Remove top side panel. Refer to *TOP SIDE PANELS* in this subsection.
3. Remove rear side panel. Refer to *REAR SIDE PANELS* in this subsection.
4. Remove bottom front side panel. Refer to *BOTTOM FRONT SIDE PANELS* in this subsection.
5. Remove front plastic rivet from bottom rear side panel.



1. Front plastic rivet

6. Remove retaining screws from bottom rear side panel.



1. Retaining screws

7. Remove bottom rear side panel from vehicle.

### Bottom Rear Side Panel Installation

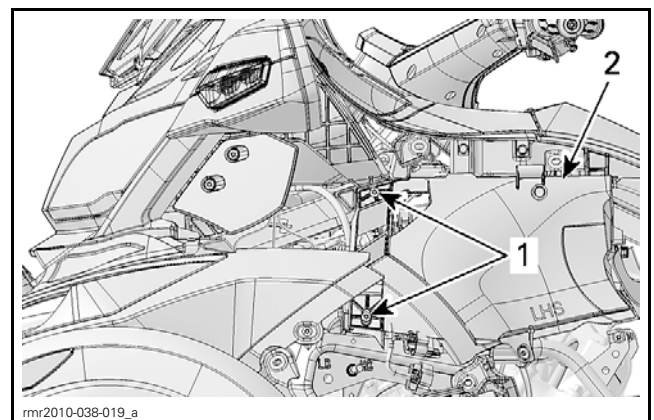
The installation is the reverse of the removal procedure. However, pay attention to the following. Torque bottom side panel retaining screws to 2.5 N•m (22 lbf•in).

## ACOUSTIC PANELS

### Acoustic Panel Replacement

#### Lateral

1. Remove middle side panel. Refer to *MIDDLE SIDE PANELS* in this subsection.
2. Remove top side panel. Refer to *TOP SIDE PANELS* in this subsection.
3. Remove rear side panel. Refer to *REAR SIDE PANELS* in this subsection.
4. Remove retaining screws from acoustic panel.



1. LH lateral acoustic panel  
2. Retaining screws

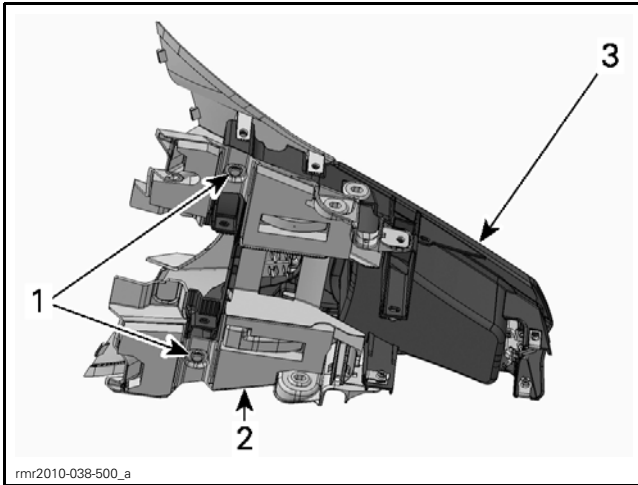
5. Replace acoustic panel on vehicle.
6. Torque acoustic panel retaining screws to 6 N•m (53 lbf•in).

## Subsection XX (BODY)

7. Reinstall all removed panels.

### Top

1. Remove glove box from vehicle, refer to *GLOVE BOX REMOVAL* in this subsection.
2. Remove plastic rivets securing acoustic panel to glove box.



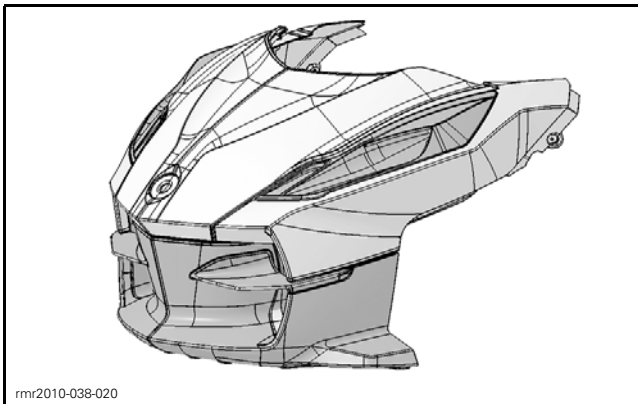
rnr2010-038-500\_a

#### TYPICAL

1. Plastic rivets
2. Top acoustic panel
3. Glove box

3. Replace acoustic panel on glove box.
4. Reinstall all removed panels and components.

## FRONT CARGO MODULE



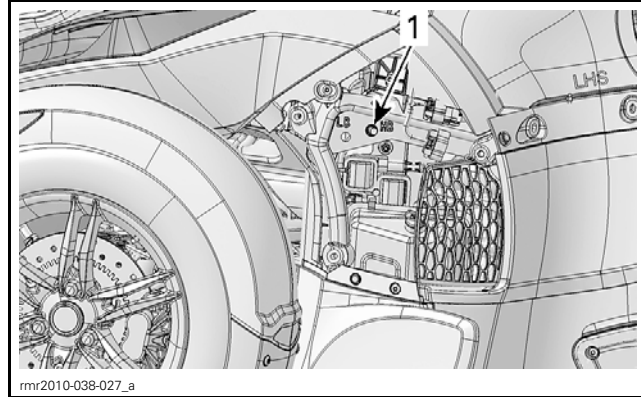
rnr2010-038-020

FRONT CARGO MODULE

### Front Cargo Module Removal

1. Remove mirrors. Refer to *MIRRORS* in this subsection.
2. Remove service covers. Refer to *SERVICE COVERS* in this subsection.
3. Remove middle side panels. Refer to *MIDDLE SIDE PANELS* in this subsection.

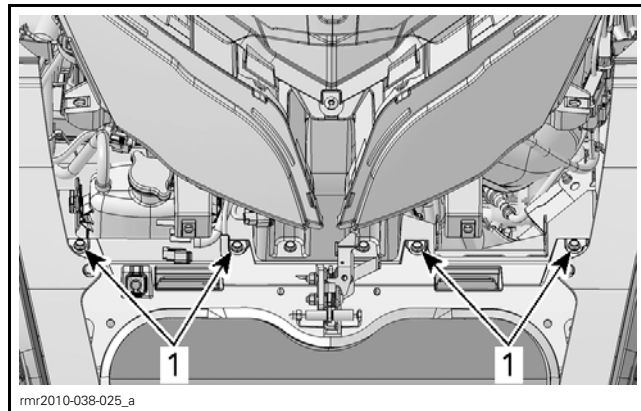
4. Remove top side panels. Refer to *TOP SIDE PANELS* in this subsection.
5. Remove front fascia. Refer to *FRONT FASCIA* in this subsection.
6. Remove nuts securing headlight adjustment cable on both side.



rnr2010-038-027\_a

1. Headlight adjustment cable

7. Disconnect the following components from vehicle.
  - APTS sensor connector
  - Horn connector
  - Low beam light connectors (CE vehicle)
  - Fog light connectors (if equipped)
  - B.U.D.S. connector
  - Storage cover actuator connector
  - Storage cover switch connector
  - Storage cover cable.
8. Remove upper retaining screws from cargo module.

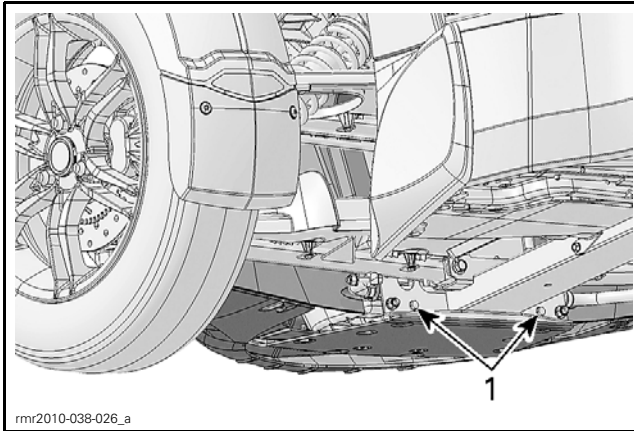


rnr2010-038-025\_a

SOME PARTS REMOVED FOR CLARITY PURPOSE

1. Upper retaining screws

9. From underneath bumper cover, remove lower retaining screws from cargo module.



1. Lower retaining screws

10. Carefully pull cargo module toward front of vehicle.

### Front Cargo Module Disassembly Sequence

To disassemble the front cargo module, carry out the following steps in this specific order. Refer to the exploded view at the beginning of this subsection for details.

1. Remove front storage compartment cover.
  - 1.1 Remove 4 screws at the front of cover.
2. Remove bumper cover air ducts.
  - 2.1 Remove 2 screws at the rear on both side.
  - 2.2 Remove 4 plastic rivets from inside air ducts on both side.
  - 2.3 Remove 2 plastic rivets from underneath bumper cover on both side.
3. Remove front panels.
  - 3.1 Remove 1 retaining washer from inside front panel on both side.
  - 3.2 Remove 3 screws from inside front panel on both side.
  - 3.3 Remove 3 plastic rivets on the top of front panel on both side.
4. Remove front bumper.

### Front Cargo Module Assembly and Installation

Assemble front cargo module as the reverse of disassembly.

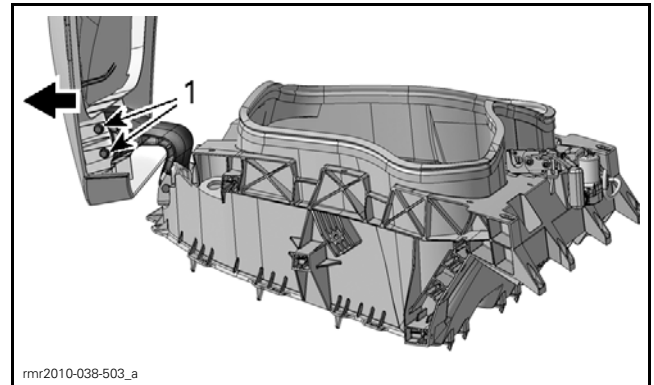
Install front cargo module as the reverse of removal procedure, however, pay attention to the following.

Adjust front storage compartment cover, refer to *FRONT STORAGE COMPARTMENT COVER ADJUSTMENT* in this subsection.

Torque storage compartment screws to 4.5 N•m (40 lbf•in).

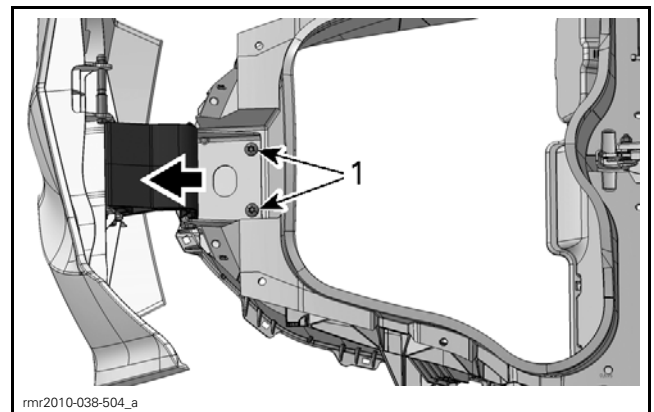
### Front Storage Compartment Cover Adjustment

1. Open front storage compartment cover.
2. Loosen 4 retaining screws at the front of cover.
3. Completely move cover toward the outside then hold it in place.
4. Tighten 4 retaining screws at the front of cover.



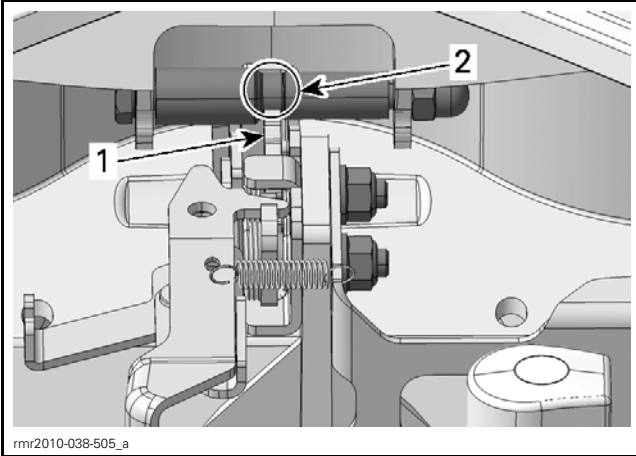
1. Retaining screws at the front of cover

5. Loosen 2 retaining screws of cover hinge.
6. Completely move cover hinge toward the front.
7. Tighten 2 retaining screws of cover hinge.



1. Retaining screws of cover hinge

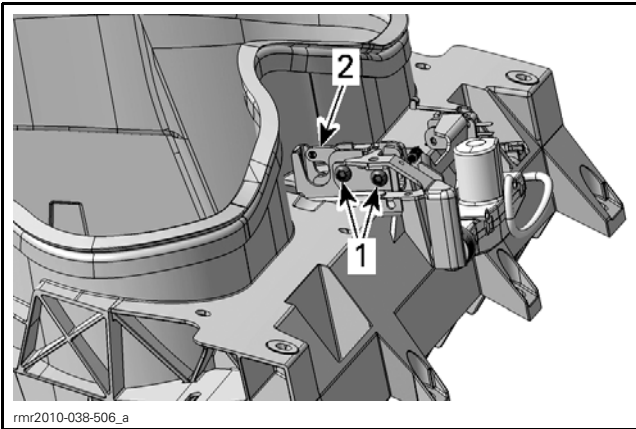
8. Verify alignment between the latch and the slot of the sleeve.
  - 8.1 If an alignment is required, loosen cover hinge screws and rotate hinge accordingly.



1. Latch
2. Slot of the sleeve

9. Lift cover 30 cm (12 in), let it fall, then verify if cover latch properly.

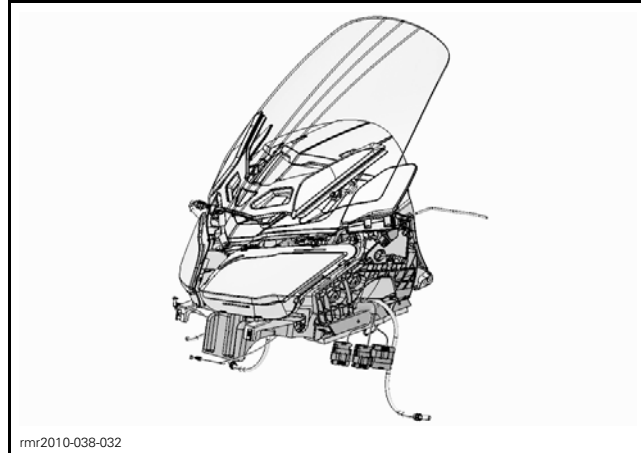
9.1 If cover does not latch, loosen latch retaining screws and adjust latch accordingly.



1. Latch retaining screws
2. Latch

10. Ensure cover height fits with front panels height when cover is closed.

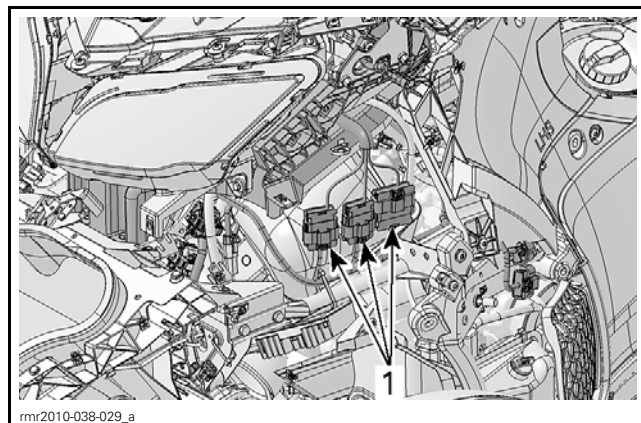
## CONSOLE MODULE



CONSOLE MODULE

### Console Module Removal

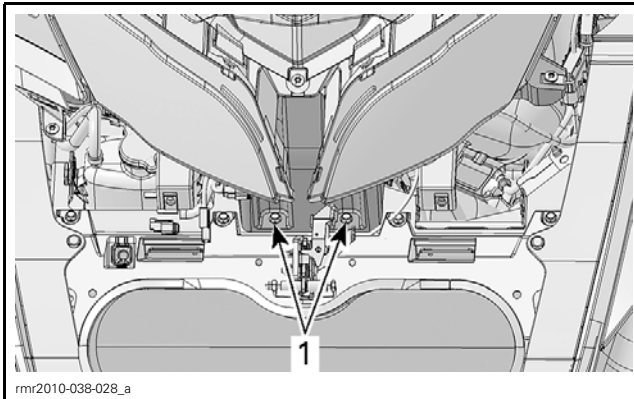
1. Lift seat.
2. Open front storage compartment.
3. Remove mirrors. Refer to *MIRRORS* in this subsection.
4. Remove both service covers. Refer to *SERVICE COVERS* in this subsection.
5. Remove middle side panels. Refer to *MIDDLE SIDE PANELS* in this subsection.
6. Remove top side panels. Refer to *TOP SIDE PANELS* in this subsection.
7. Remove lateral acoustic panels. Refer to *ACOUSTIC PANELS* in this subsection.
8. Remove front fascia. Refer to *FRONT FASCIA* in this subsection.
9. Disconnect module harness connectors located on the LH side of vehicle.



SOME PARTS REMOVED FOR CLARITY PURPOSE

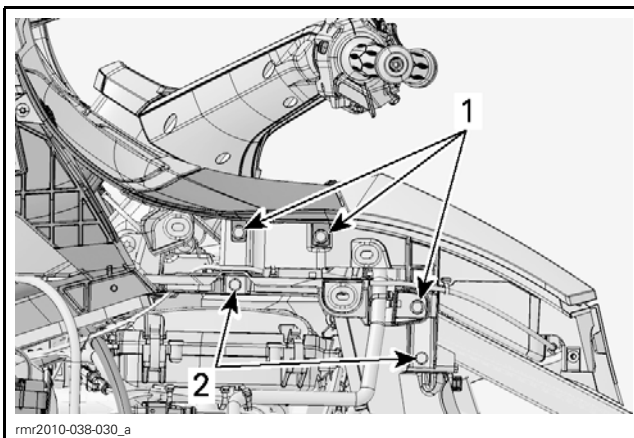
1. Module harness connectors

10. Remove front retaining screws from console module.



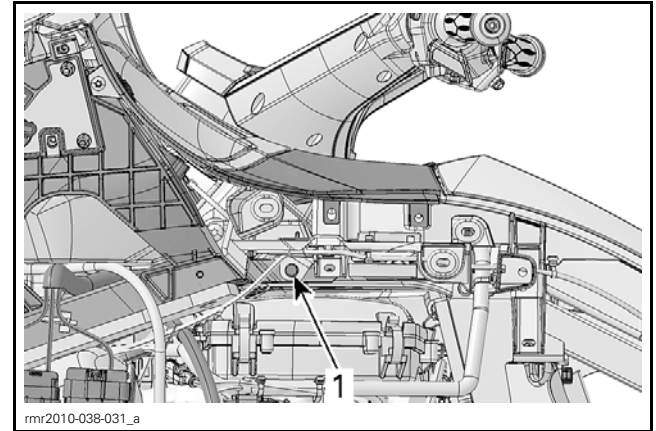
*SOME PARTS REMOVED FOR CLARITY PURPOSE*  
 1. Front retaining screws

11. Remove 3 plastic rivets from glove box on both side.
12. Remove 2 retaining screws from glove box on both side.



1. Plastic rivets  
 2. Retaining screws

13. Slightly lift glove box upwards.
14. Remove side retaining screws from console module.



1. Side retaining screw

15. Carefully pull console module toward front of vehicle.

### Console Module Disassembly Sequence

To disassemble the console module, carry out the following steps. Refer to the exploded view at the beginning of this subsection for details.

1. Remove multifunction gauge.
  - 1.1 Remove 4 screws securing gauge trim.
  - 1.2 Pull down both upper tabs.
  - 1.3 Move top of gauge toward rear.
  - 1.4 Disconnect gauge connector.
2. Remove headlights.
  - 2.1 Remove 4 retaining screws from headlight.
  - 2.2 Pull apart the tabs to unlock cover.
  - 2.3 Pull cover out.
  - 2.4 Disconnect the bulb connector.
3. Remove windshield. Refer to *WINDSHIELD* in this subsection.

### Console Module Installation

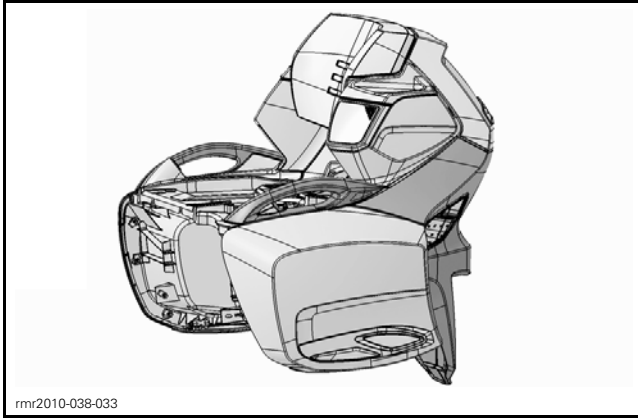
Assemble console module as the reverse of disassembly, however, pay attention to the following.

Torque gauge trim screws to 2.5 N•m (22 lbf•in). Install console module as the reverse of removal procedure, however, pay attention to the following.

Torque console module front retaining screws to 7 N•m (62 lbf•in).

Torque console module side retaining screws to 7 N•m (62 lbf•in).

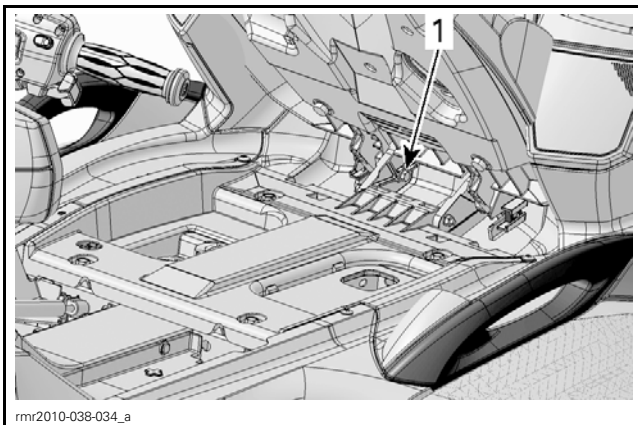
## REAR CARGO MODULE



REAR CARGO MODULE

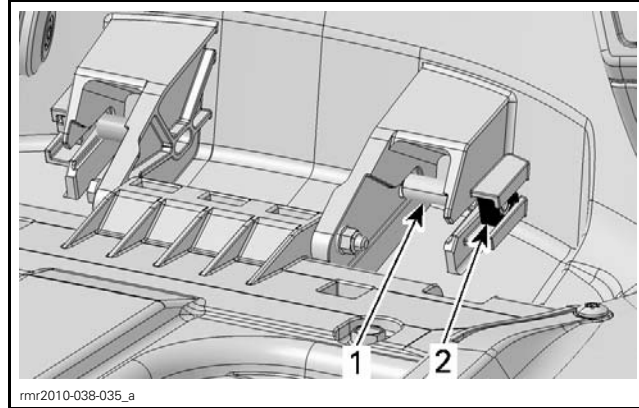
### Rear Cargo Module Removal

1. Remove middle side panel. Refer to *MIDDLE SIDE PANELS* in this subsection.
2. Remove top side panel. Refer to *TOP SIDE PANELS* in this subsection.
3. Remove rear side panel. Refer to *REAR SIDE PANELS* in this subsection.
4. Remove seat from vehicle as follows:
  - 4.1 Disconnect shock absorber from seat base.
  - 4.2 Unplug pillion rider (passenger) switch.
  - 4.3 Remove seat base retaining bolts.



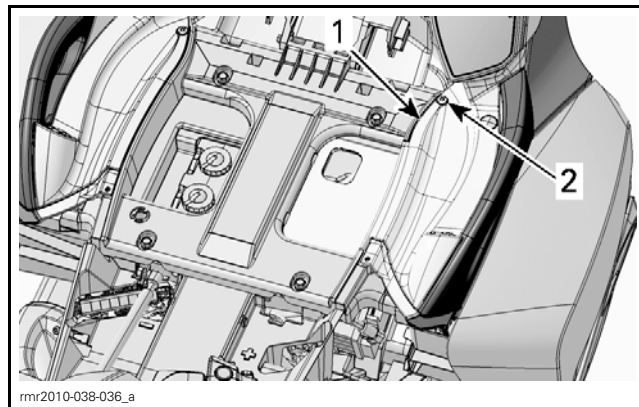
1. Seat base retaining bolt

- 4.4 Remove spacer and caged nuts.



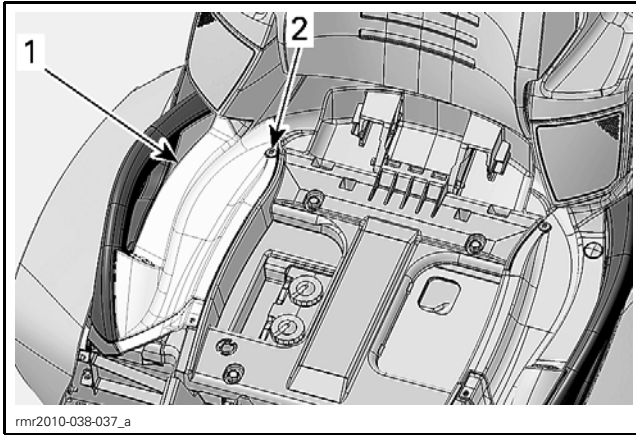
1. Spacer  
2. Caged nut

5. Remove rear retaining screw from battery access panel (LH side).
6. Disconnect passenger heated grip switch.
7. Remove battery access panel from vehicle.



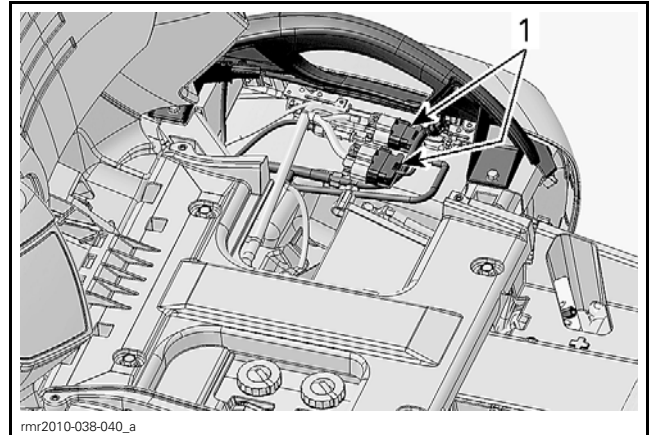
1. Battery access panel  
2. Rear retaining screw

8. Remove rear retaining screw from audio player access panel (RH side).
9. Disconnect passenger audio control switch (option package).
10. Remove audio player access panel from vehicle.



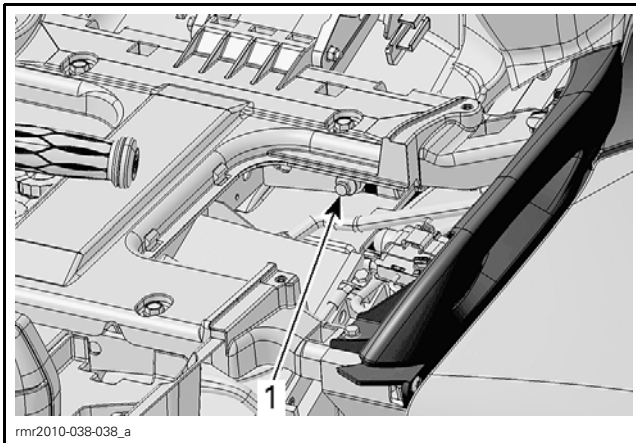
1. Audio player access panel  
2. Rear retaining screw

11. Disconnect LH and RH ground straps by unscrewing each retaining screw.

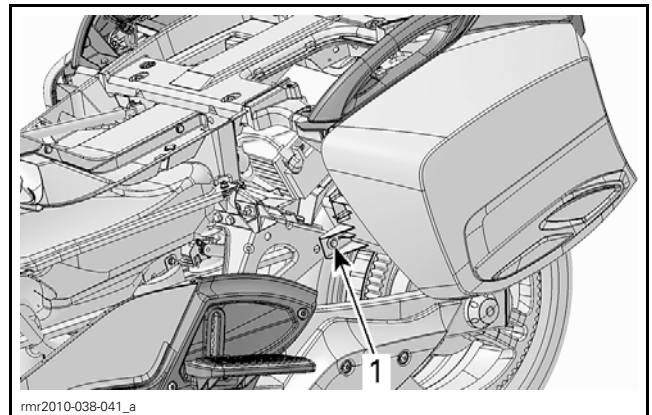


1. Cargo harness connectors

13. Remove lateral retaining screws and washers (on both side) of rear cargo module.

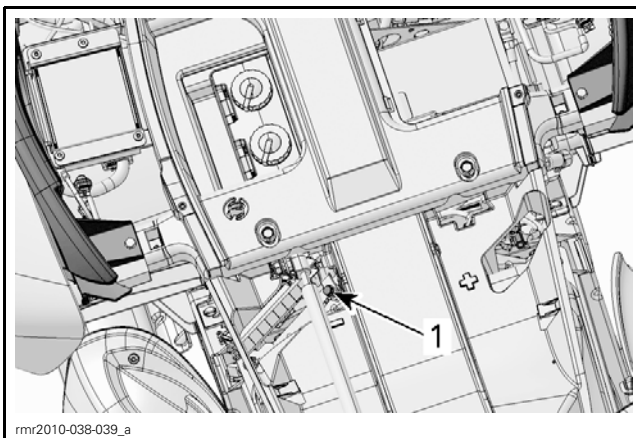


1. LH ground strap retaining screw

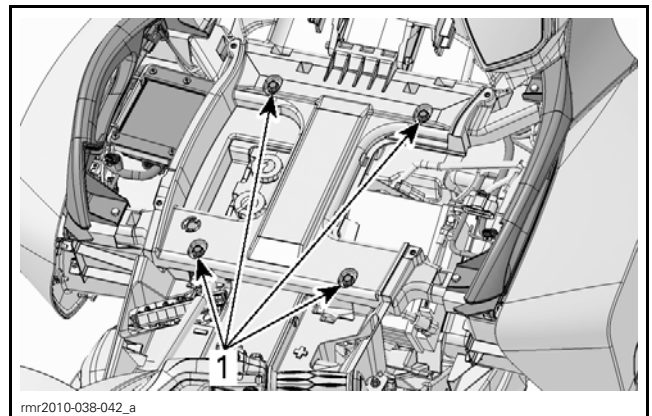


1. Lateral retaining screw

14. Remove top retaining screws of rear cargo module.



1. RH ground strap retaining screw



1. Top retaining screws

12. Disconnect both cargo harness connectors located on the LH side of the vehicle near passenger grab handle.

15. Carefully pull rear cargo module toward rear.

## Subsection XX (BODY)

### Rear Cargo Module Disassembly Sequence

To disassemble the rear cargo module, carry out the following steps in this specific order. Refer to the exploded view at the beginning of this subsection for details.

1. Remove rear panel.
  - 1.1 Open top and side storage compartment covers.
  - 1.2 Remove 2 screws on the top of each side storage compartment.
  - 1.3 Remove 4 screws on the rear of top storage compartment.
2. Remove rear fender.
  - 2.1 Remove 3 screws on the upper portion of rear fender.
  - 2.2 Remove 2 screws on the rear of each side storage compartment.
  - 2.3 Disconnect licence plate connector.
3. Remove passenger backrest.
  - 3.1 Remove 3 screws inside top storage compartment.
  - 3.2 Remove 2 screws on the top of passenger backrest.
4. Remove taillight.
  - 4.1 Remove 3 screws on the taillight housing.
  - 4.2 Disconnect taillight connector.

### Rear Cargo Module Installation

Assemble cargo module as the reverse of disassembly, however, pay attention to the following.

Torque taillight screws to 2.5 N•m (22 lbf•in).

Torque passenger backrest screws

- To 4.5 N•m (40 lbf•in) for the ones inside storage compartment.
- To 2.5 N•m (22 lbf•in) for upper screws.

Torque rear fender screws to 2.5 N•m (22 lbf•in).

Torque rear panel screws to 2.5 N•m (22 lbf•in).

Install cargo module as the reverse of removal procedure, however, pay attention to the following.

Torque rear cargo top retaining screws to 9 N•m (80 lbf•in).

Torque rear cargo lateral retaining screws to 4.5 N•m (40 lbf•in).

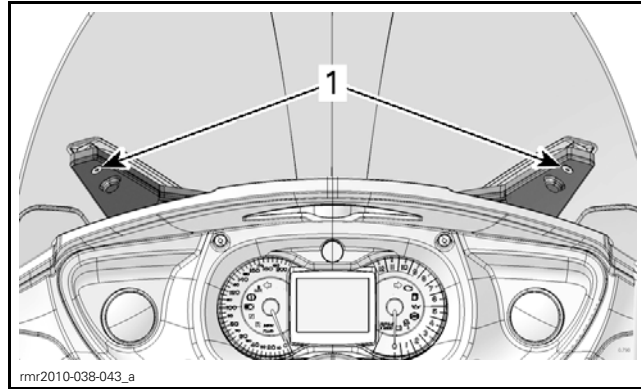
Torque battery and audio player access panels retaining screws to 2.5 N•m (22 lbf•in).

Torque seat base retaining bolts to 4.5 N•m (40 lbf•in).

## WINDSHIELD

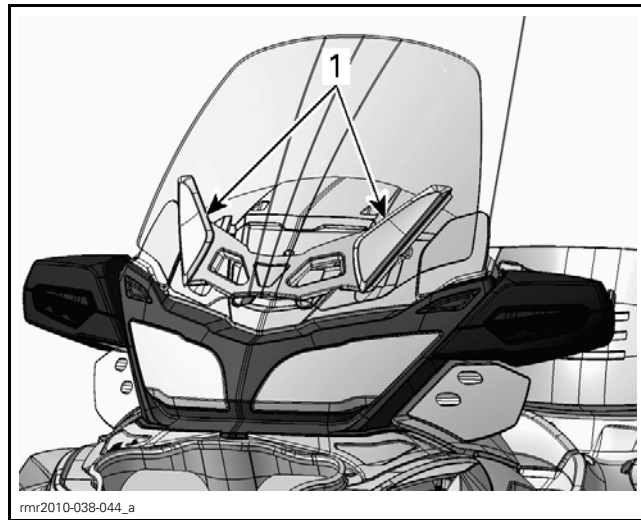
### Windshield Removal

1. From inside windshield, remove retaining screws from windshield trim panels.



1. Windshield trim panels retaining screws

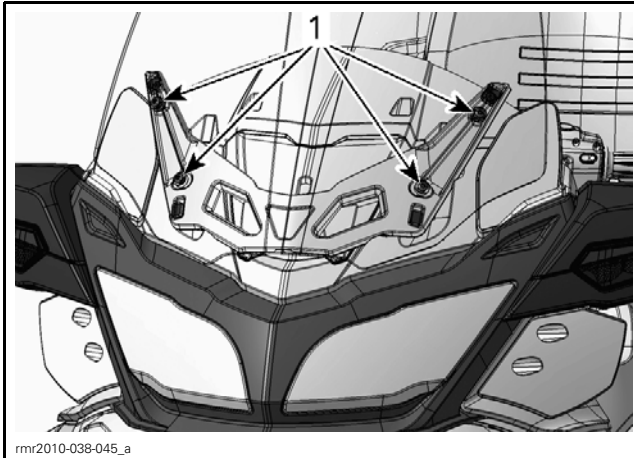
2. Remove windshield trim panels from vehicle.



1. Windshield trim panels

3. Remove windshield retaining screws and sleeves from support.





1. Windshield retaining screws

4. Carefully remove windshield from vehicle.

### Windshield Installation

The installation is the reverse of the removal procedure. However, pay attention to the following.

Torque windshield retaining screws to 4.5 N•m (40 lbf•in).

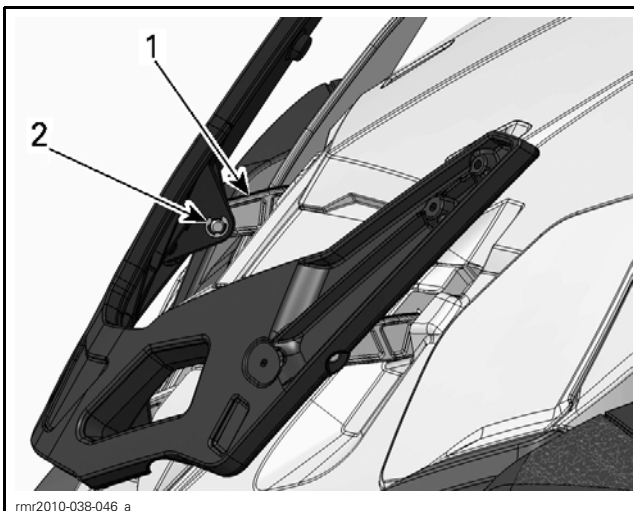
Torque windshield trim panels retaining screws to 2.5 N•m (22 lbf•in).

## WINDSHIELD SUPPORT

### Windshield Support Removal

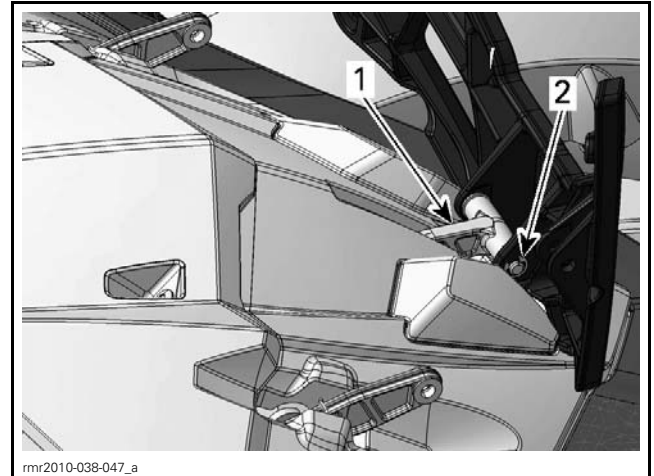
**NOTE:** To access directly to windshield motor, it is not necessary to remove windshield from windshield support (step 1).

1. Remove windshield. Refer to *WINDSHIELD* in this subsection.
2. Remove C-clips from side arm pins.



1. Side arm  
2. C-clip

3. Remove side arm pins.
4. Rotate windshield support toward front.
5. Remove C-clip from center arm pin.



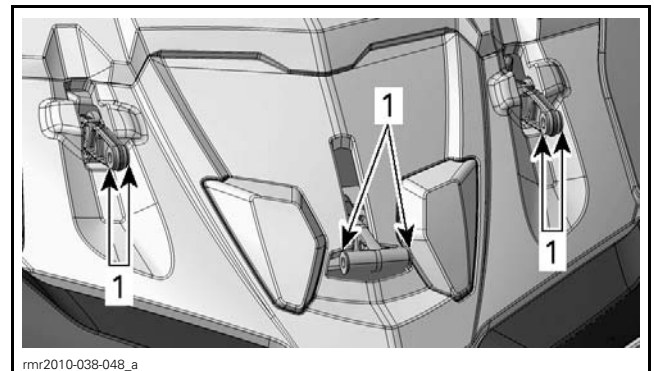
1. Center arm  
2. C-clip

6. Remove center arm pin.
7. Remove windshield support from vehicle.

### Windshield Support Installation

The installation is the reverse of the removal procedure. However, pay attention to the following.

Make sure that arm bushings are installed as per the following illustration.



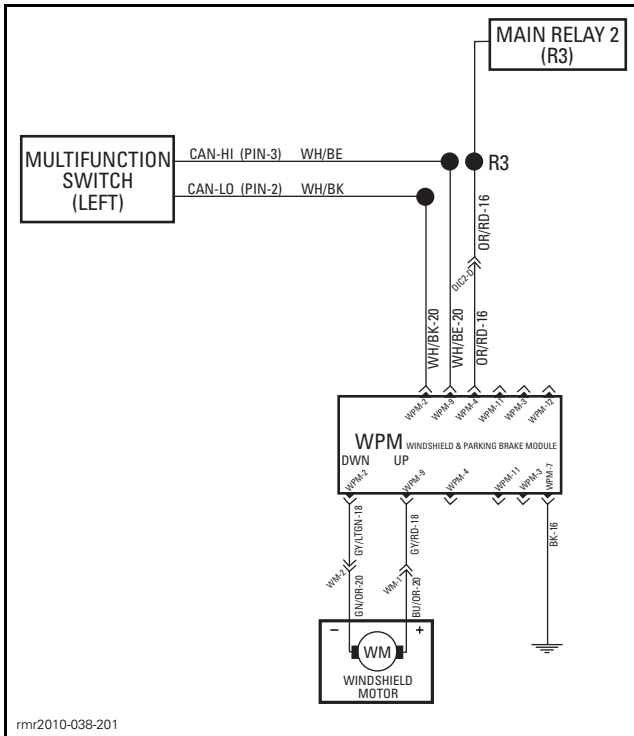
1. Bushings

Install NEW C-clip on arm pins.

## WINDSHIELD MOTOR

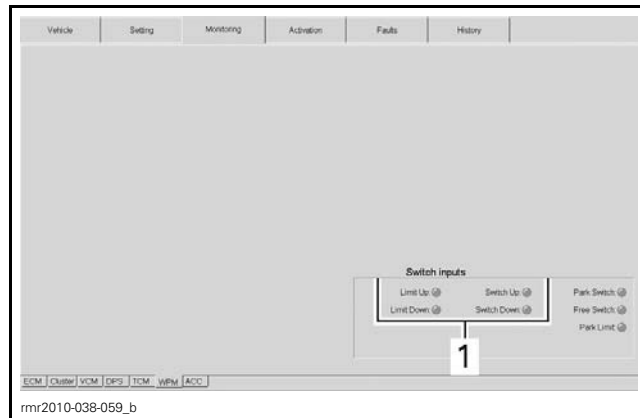
**NOTICE** Do not remove windshield motor from windshield base. Both are calibrated at the factory. If windshield motor needs to be changed, replace windshield base with WPM module and windshield motor as an assembly.

## Windshield Wiring Diagram



WINDSHIELD ADJUSTMENT SWITCH

5. Check proper operation in B.U.D.S.

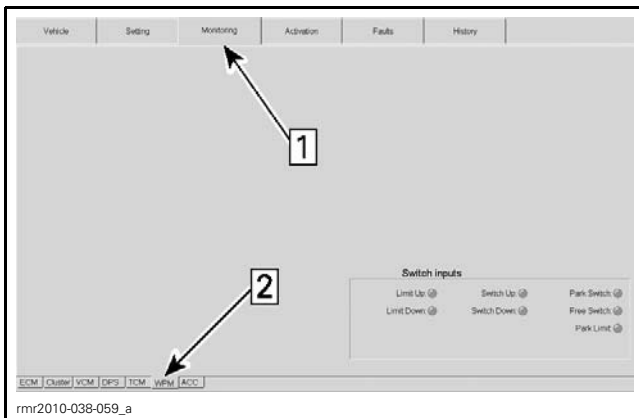


1. Windshield operation monitoring lights

## Windshield Motor Monitoring (With B.U.D.S.)

To monitor windshield motor during troubleshooting operation, proceed as follows:

1. Connect vehicle to B.U.D.S.. Refer to *COMMUNICATION TOOLS AND B.U.D.S. SOFTWARE* subsection.
2. Select **Monitoring** page.
3. Select **WPM** tab.

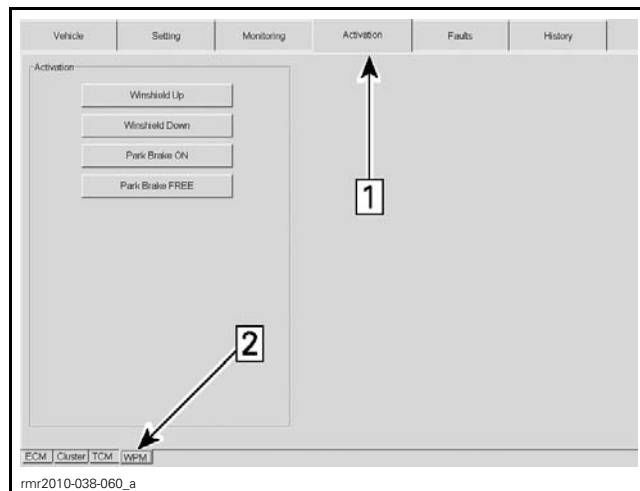


Step 1: Select monitoring  
Step 2: Select WPM

4. Press windshield adjustment switch on vehicle.

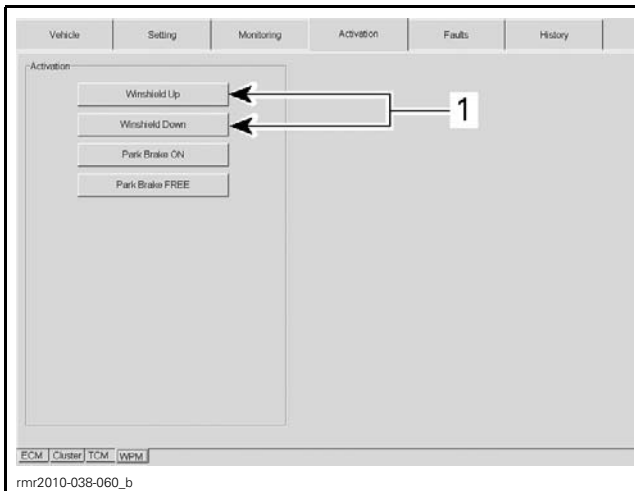
## Windshield Motor Operation Test

1. Connect vehicle to B.U.D.S. Refer to *COMMUNICATION TOOLS AND B.U.D.S. SOFTWARE* subsection.
2. Select **ACTIVATION** page.
3. Select **WPM** tab.



Step 1: Activation page  
Step 2: WPM folder

4. Press WINDSHIELD UP button.



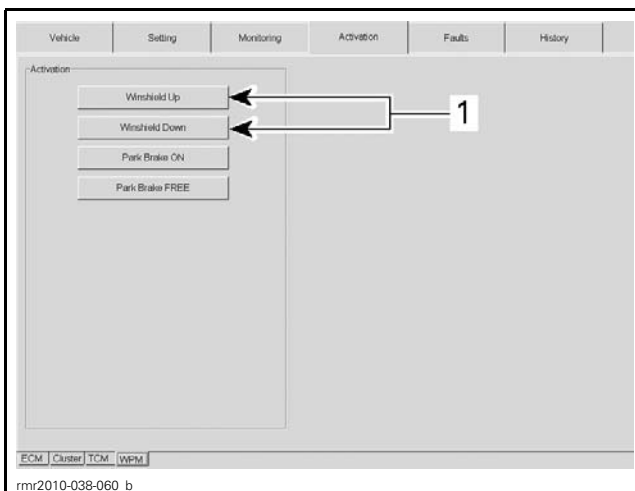
1. Windshield UP and DOWN button

5. Verify if windshield motor works to raise windshield.

If windshield motor does not work:

- Check input voltage at motor (PIN-1), refer to the *WIRING DIAGRAM*.
- Check ground circuit continuity at motor (PIN-2), refer to the *WIRING DIAGRAM*.
- Check connector and terminal condition.

6. Press WINDSHIELD DOWN button.



1. Windshield UP and DOWN button

7. Verify if windshield motor works to lower windshield.

If windshield motor does not work:

- Check input voltage at motor (PIN-2), refer to the *WIRING DIAGRAM*.
- Check ground circuit continuity at motor (PIN-1), refer to the *WIRING DIAGRAM*.
- Check connector and terminal condition.

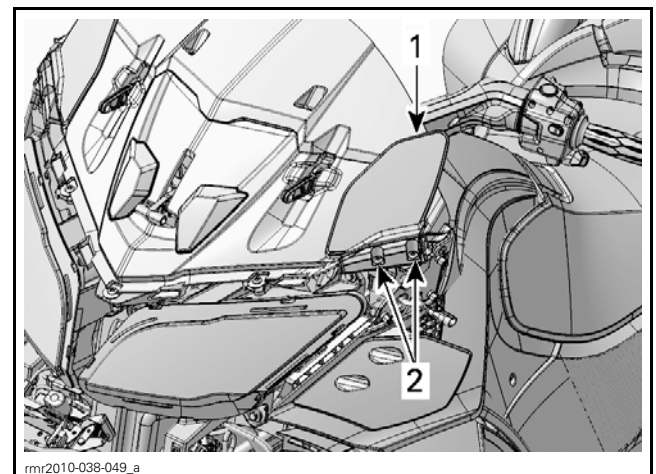
If the fault is not found after having carried out the previous tests:

- Test motor operation by connecting it directly to the battery posts.
  - If motor works properly, test module, refer to *WINDSHIELD MODULE (WPM)* in this subsection.
  - If motor does not work properly, replace windshield base with WPM module and windshield motor as an assembly.

**NOTICE** Do not power motor directly with the battery for a long period. Apply voltage quickly to ensure that the motor will not overheat at the end of its stroke.

### Windshield Motor Removal

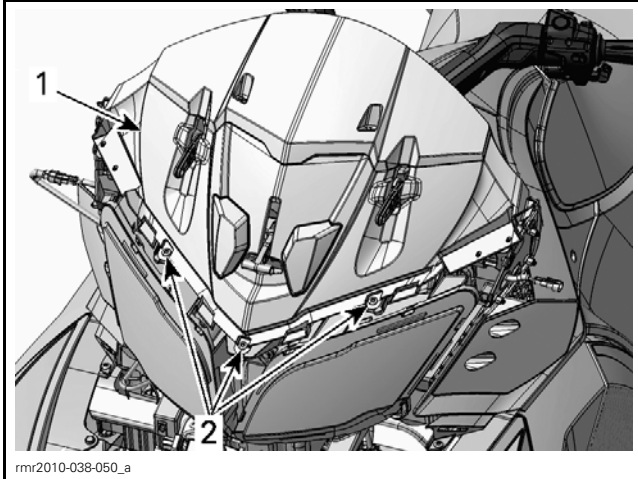
1. Remove windshield and windshield support together. Refer to *WINDSHIELD SUPPORT* in this subsection.
2. Remove front fascia. Refer to *FRONT FASCIA* in this subsection.
3. Remove retaining screws of upper wind deflectors.
4. Remove upper wind deflectors from vehicle.



1. Upper wind deflector  
2. Retaining screws

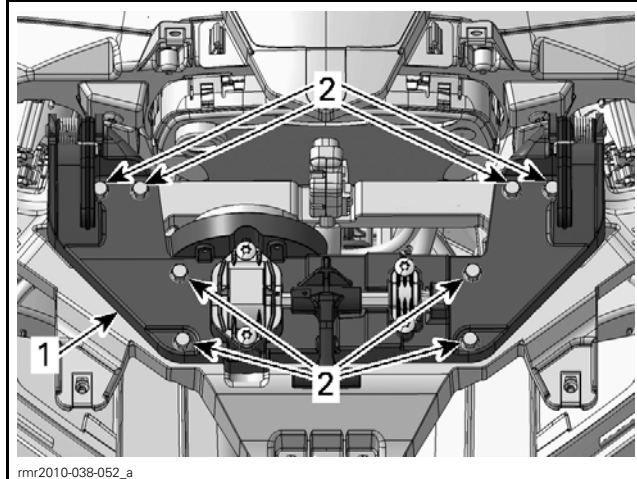
5. Remove lower retaining screws from console panel.

## Subsection XX (BODY)



1. Console panel
2. Lower retaining screws

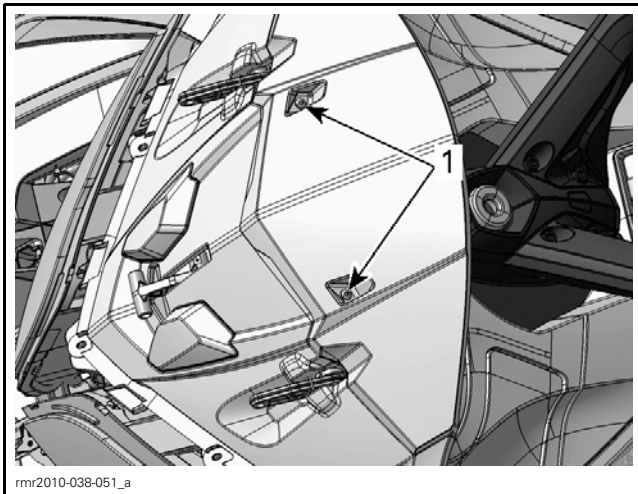
6. Remove upper retaining screws from console panel.



1. WPM module
2. Retaining screws

9. Slightly lift WPM module upwards.

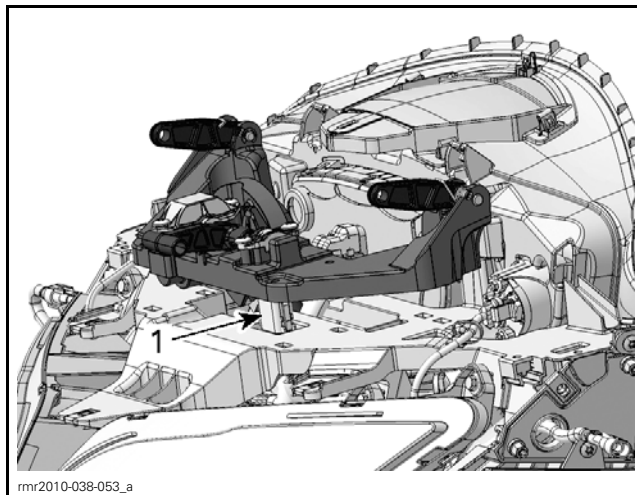
10. Disconnect WPM module connector.



1. Upper retaining screws

7. Remove console panel by lifting it toward front.

8. Remove retaining screws from WPM module.



1. WPM module connector

11. Disconnect windshield motor wires.

12. Remove windshield base (WPM module) from vehicle.

13. Remove both side arms as follows:

13.1 Remove retaining nut and washer.

13.2 Remove retaining bolt and washer.

13.3 Remove sleeve.

13.4 Remove side arm.

**NOTICE** Do not remove windshield motor from windshield base. Both are calibrated at the factory. If windshield motor needs to be changed, replace windshield base with WPM module and windshield motor as an assembly.

## Windshield Motor Installation

The installation is the reverse of the removal procedure. However, pay attention to the following.

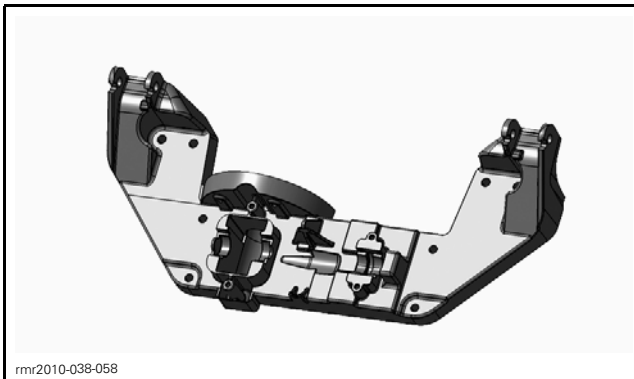
Torque WPM module retaining screws to 4.5 N•m (40 lbf•in).

Torque console panel retaining screws to 2.5 N•m (22 lbf•in).

Torque upper wind deflector retaining screws to 4.5 N•m (40 lbf•in).

## WINDSHIELD MODULE (WPM)

**NOTE:** WPM module has 2 functions, it controls windshield and parking brake. The WPM module is integrated into the windshield base.

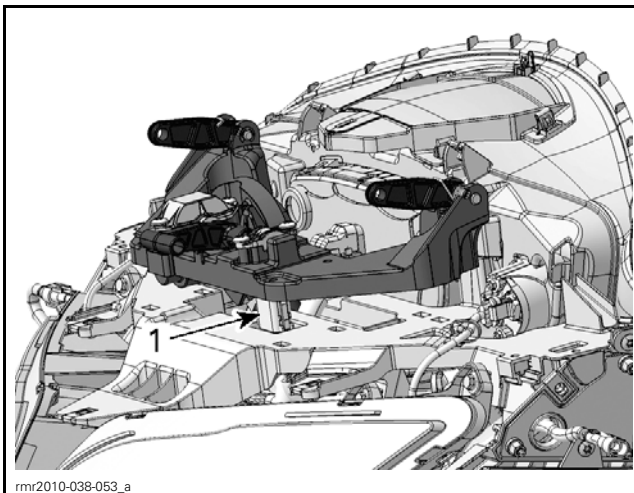


rmr2010-038-058

WPM MODULE AND WINDSHIELD BASE

## WPM Module Signal Circuit Continuity Test

1. Remove body parts as required to access to the WPM module. Refer to *WPM MODULE REMOVAL* in this subsection.
2. Disconnect WPM module connector.



rmr2010-038-053\_a

1. WPM module connector

3. Disconnect LH multi-switch (MSL) connector. Refer to *LIGHTS, GAUGE AND ACCESSORIES* subsection.
4. Set the FLUKE 115 MULTIMETER (P/N 529 035 868) to  $\Omega$ .
5. Measure resistance as per the following table.

TEST PROBES	RESISTANCE
MSL switch connector pin 2 (WH/BK)	Close to 0 $\Omega$
WPM module connector pin 8 (WH/BK)	

TEST PROBES	RESISTANCE
MSL switch connector pin 3 (WH/BE)	Close to 0 $\Omega$
WPM module connector pin 6 (WH/BE)	

If results are not as per the previous tables:

- Test MSL switch, refer to *LIGHTS, GAUGE AND ACCESSORIES*.
- Check connector and terminal condition.
- Repair open circuit in wiring.

If the fault is not found after having carried out the previous operations:

- Check input voltage at WPM module (PIN-5), refer to the *WIRING DIAGRAM*.
- Check ground circuit continuity at WPM module (PIN-7), refer to the *WIRING DIAGRAM*.

If the fault is still not found:

- Replace WPM module.

## WPM Module Removal

1. Remove windshield base with WPM module and windshield motor as an assembly. Refer to *WINDSHIELD MOTOR REMOVAL* in this subsection.

**NOTICE** Do not remove windshield motor from windshield base. Both are calibrated at the factory. If WPM module needs to be changed, replace windshield base with WPM module and windshield motor as an assembly.

## WPM Module Installation

The installation is the reverse of the removal procedure.