

February 10th, 2012 Subject: **Wiring Diagrams Applicable to 2012 ATV Models**

No. **2012-10**

YEAR	MODEL	MODEL NUMBER	SERIAL NUMBER
2012	All	All	All

APPLICABLE WIRING DIAGRAMS

2012 DS 70, DS 90 and DS 90X

Use the diagram in the shop manual:

DESCRIPTION	PART NUMBER
2008 DS 70, DS 90, DS 90X Shop Manual	219 100 278

2012 DS 250

Use the diagram in the shop manual:

DESCRIPTION	PART NUMBER
2006 DS 250 Shop Manual	219 100 236

2012 DS 450 Series

Use the diagram attached to this bulletin.

2012 Outlander 400/500/650, Outlander MAX 400/500/650 and Renegade 500

Use the diagram in the wiring diagram booklet:

NOTE: For CE models supplement, use the diagram attached to this bulletin.

DESCRIPTION	PART
2011 Outlander/Renegade Series Wiring Diagrams Booklet	219 100 474

2012 Outlander 800R MAX and Outlander 800R XMR

Use the diagram in the wiring diagram booklet:

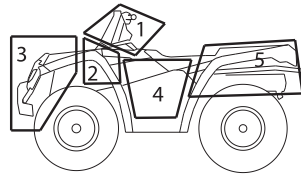
DESCRIPTION	PART
2011 Outlander/Renegade Series Wiring Diagrams Booklet	219 100 474

2012 Outlander 800R/1000 and Renegade 800R/1000

Use the diagram found in the latest shop manual:

DESCRIPTION	PART
2012 Outlander (1-UP), Renegade 800R/1000 Shop Manual	219 100 542

2012 DS 450 GENERAL SYSTEM



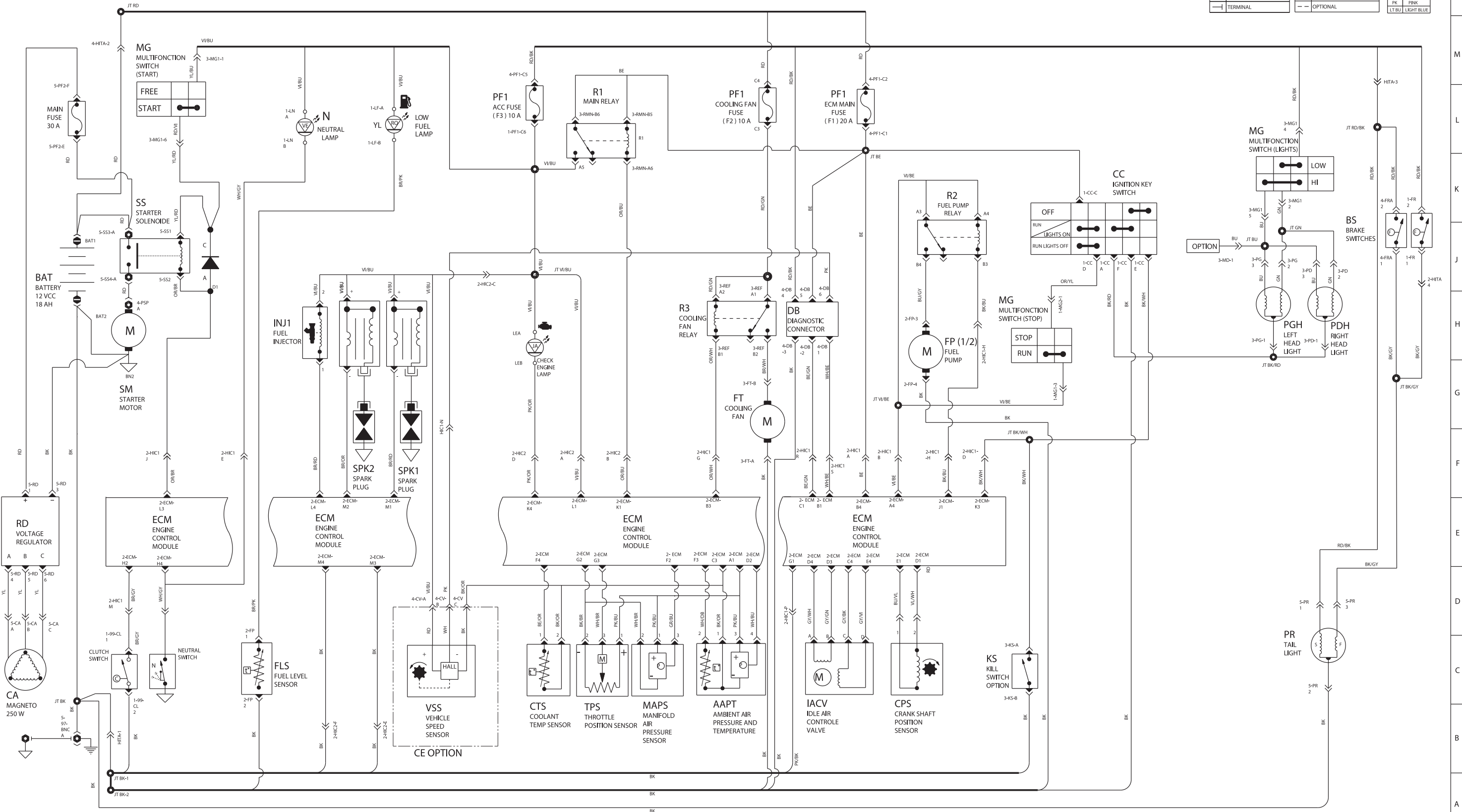
TERMINAL IDENTIFICATION		
NAME	ZONE-CONNECTOR	NAME-TERMINAL #/A
EX: CI	1 - CI	- 15
EX: CV	4 - CV	- A
EX: ME	2 - ME	

AWG	MAX. CURRENT	MAX. FUSE CURRENT	MAX. WATT
# 6	100 amps	125 amps	1450 watts
# 8	65 amps	80 amps	990 watts
# 10	40 amps	50 amps	580 watts
# 12	25 amps	30 amps	365 watts
# 14	16 amps	20 amps	230 watts
# 16	10 amps	15 amps	145 watts
# 18	6 amps	7.5 amps	85 watts

* AT 50°C MAX

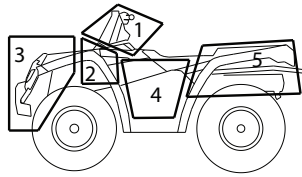
ZONE #	ZONE DESCRIPTION
1	STEERING AREA
2	MODULE AREA
3	FRONT OF VEHICLE
4	ENGINE AREA
5	REAR OF VEHICLE

•	WELDED JOINT	⏏	FRAME GROUND	⏏	COLOR CODE
—	SHRINKED JOINT	⏏	ENGINE GROUND	BE	BEIGE
↔	CROSSED WIRE	⏏	PHILLIPS SCREW	BL	BLUE
—	WIRE BUS	⏏	NUT CONNECTION	BR	BROWN
—	SIMPLE CONDUCTOR WIRE	⏏	SPLICE CONNECTION	GN	GREEN
⏏	FEMALE TERMINAL	⏏	COMPONENT CONNECTION	OR	ORANGE
⏏	MALE TERMINAL	⏏	SECTION OF MODULE	RD	RED
—	STEEL LINK (FRAME)	⏏	SLOTTED SCREW	VI	VIOLET
—	TERMINAL	⏏	OPTIONAL	WH	WHITE
				YL	YELLOW
				PK	PINK
				LT BU	LIGHT BLUE



2012 OUTLANDER 400/500/650
2012 OUTLANDER MAX 400/500/650
RENEGADE 500
CE MODEL

NOTE: MUST BE USED IN CONJUNCTION WITH NORTH AMERICA WIRING DIAGRAM.



ZONE #	ZONE DESCRIPTION
1	STEERING AREA
2	MODULE AREA
3	FRONT OF VEHICLE
4	ENGINE AREA
5	REAR OF VEHICLE

COLOR CODE	
BE	BEIGE
BK	BLACK
BU	BLUE
BR	BROWN
GN	GREEN
GY	GREY
OR	ORANGE
RD	RED
VI	VIOLET
WH	WHITE
YL	YELLOW
PK	PINK
LTBLU	LIGHT BLUE

