

# SAFETY RECALL NOTICE



**Bombardier Recreational Products Inc.**

565 de la Montagne Street  
Valcourt, Québec, Canada J0E 2L0

[www.brp.com](http://www.brp.com)

Date: October 27, 2010

Re: Can-Am™ DS 450™ Speedometer Inaccuracy (**CE MODELS ONLY**)

**2009 DS 450 CE**

**2009 DS 450 X™ CE**

**2009 DS 450 X mx CE**

Dear Can-Am ATV Dealer / Distributor,

**This notice is sent to you in accordance with the requirements of the General Product Safety Direction of the European Community and other applicable laws.**

## **What is the reason for this notice?**

Bombardier Recreational Products Inc. ("BRP") is conducting a voluntary safety recall of certain 2009 Can-Am ATV DS 450 CE models, as specified in the attached Safety Campaign Bulletin.

## **What is the potential problem?**

Involved vehicles have inaccurate speedometer reading (30% less than actual speed). This situation could result in vehicle being driven at illegal speeds and could alter the judgment of the driver in some riding conditions. This condition may increase the risk of a crash with injury or death.

## **What will BRP do?**

BRP is sending a Safety Recall letter to all known registered owners of these vehicles. This letter urges the owners to contact their authorized BRP Can-Am ATV dealer to have their vehicle serviced. BRP also posted this notice and attached Safety Campaign Bulletin on its BOSSWeb dealer website ([www.bossweb.brp.com](http://www.bossweb.brp.com)) and on its public website ([www.can-am.brp.com](http://www.can-am.brp.com)).

## **What should you do?**

1. Do not sell or deliver any involved ATV until the repair has been completed.
2. Contact all of your customers who purchased an affected model. You must inform them about the foregoing and advise them to make an appointment to update the speedometer calibration. If they choose to ride their vehicle prior to this service, urge them to be aware of this condition.
3. Follow all instructions applicable to model as provided in the attached Safety Campaign Bulletin.

## **If you have questions about this notice:**

- Please contact your local distributor or regional office which can be found at [www.brp.com](http://www.brp.com).

We apologize for any inconvenience this may cause you. Thank you for your immediate attention to this matter.

Sincerely,  
After-Sales Service Department

Ski-Doo  
Lynx  
Sea-Doo  
Evinrude  
Johnson  
Rotax  
Can-Am

**SAFETY**  
CAMPAIGN**ATV**  
**WARRANTY**  
Bulletin**⚠ WARNING:** All involved customers must be notified, all involved units must be corrected as per instructions herein.

Campaign no.: 2009-0009

October 27, 2010

Subject: **Can-Am™ DS 450™ Speedometer Inaccuracy**  
**(CE MODELS ONLY)**No. **2009-8****REVISION 1**  
**December 14, 2010**

YEAR	MODEL	MODEL NUMBER	SERIAL NUMBER
2009	DS 450 CE	3F9G / 3F9F	See Attached List
	DS 450 X™ CE	3G9D	
	DS 450 X mx CE	3H9C	

► Underlined text(s) between arrows is (are) modified element(s) to the original publication. ◀

## PROBLEM

Involved vehicles have inaccurate speedometer reading (30% less than actual speed).

This situation could result in vehicle being driven at illegal speeds and could alter the judgment of the driver in some riding conditions. This condition may increase the risk of a crash with injury or death.

## SOLUTION

Update speedometer calibration.

► On some vehicles, all the multifunction gauge settings and registered information may reset during the update.

This includes:

- = Odometer (total distance travelled by the vehicle)
- = Language
- = Cluster mode
- = Cluster units
- = Cluster racing
- = Cluster country.

At the end of the procedure, they must be set according to the vehicle usage.

The customer must be advised of this situation. To prevent the loss of this information, it is requested to print a B.U.D.S. report BEFORE beginning the update procedure.

Give the report to the customer for his own records and keep a copy for your records. ◀

## PROCEDURE

### Calibration File Download

NOTE: Always use the latest B.U.D.S. version on your shop computer. At time of printing, the latest B.U.D.S. version is P2.3.31. It is available from the following web site: <http://www.boss-web.brp.com>.

1. On the internet, go to the BOSSWeb site:

**WWW.BOSSWEB.BRP.COM**

2. Under ComCenter drop down list, select:
  - *DOCUMENT*
3. In the menu, select:
  - Document Type: *DIAGNOSTIC SOFTWARE*
4. Click on arrow and wait for results.

5. Select and download the following calibration update file:

SPEEDOMETER UPDATE FILE
715 900 125.FC

**NOTE:** If your internet connection is not on your shop PC, save the file to a floppy diskette, a USB memory stick or a CD ROM to then copy it to your shop PC. Take note where you save the file, because you will browse for it.

## B.U.D.S. Connection

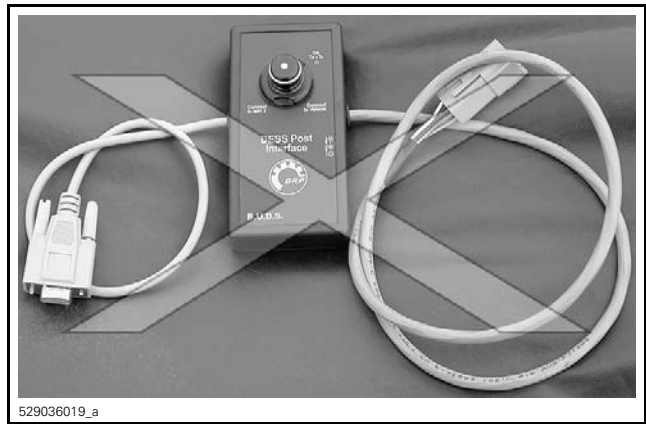
1. Connect vehicle to B.U.D.S. Refer to *2008 CAN-AM DS 450 EFI SHOP MANUAL* — Sub-section 02 under *COMMUNICATION TOOLS AND B.U.D.S. SOFTWARE*.

REQUIRED COMMUNICATION TOOLS
MPI-2 INTERFACE CARD (P/N 529 036 018)
MPI-2 DIAGNOSTIC CABLE (P/N 710 000 851)
B.U.D.S. KW2000 (500K) protocol



DS 450 EFI COMMUNICATION CONNECTOR (TYPICAL)

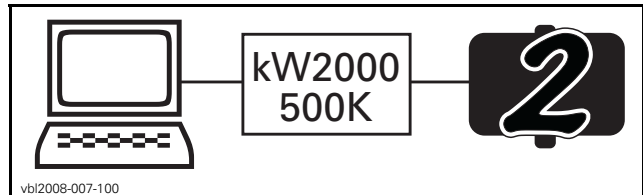
**NOTE:** Do not use D.E.S.S. POST INTERFACE (P/N 529 036 019).



DO NOT USE D.E.S.S. POST INTERFACE

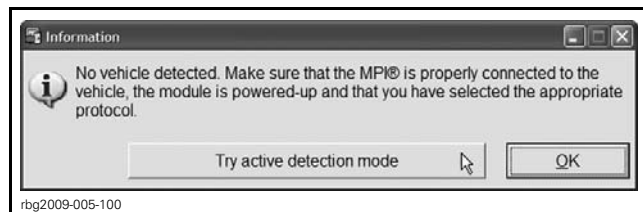
## B.U.D.S. Database Update

1. Turn ignition key to ON.
2. Start B.U.D.S. and logon.
3. Ensure both USB and CAN lights of MPI-2 are green.
4. Ensure the status bar shows KW2000 (500K) with the number 2 to its right.

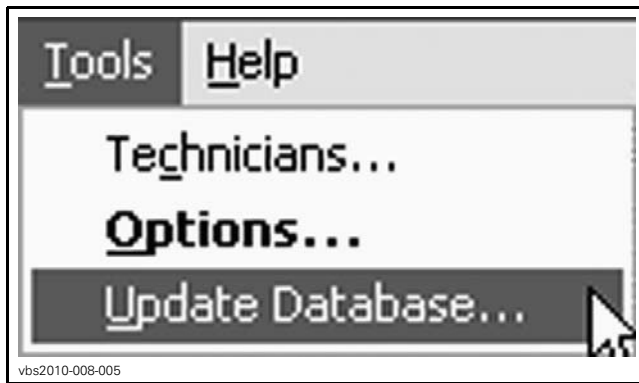


CONNECTION SUCCESSFUL — ECM AND MULTIFUNCTION GAUGE ARE CONNECTED

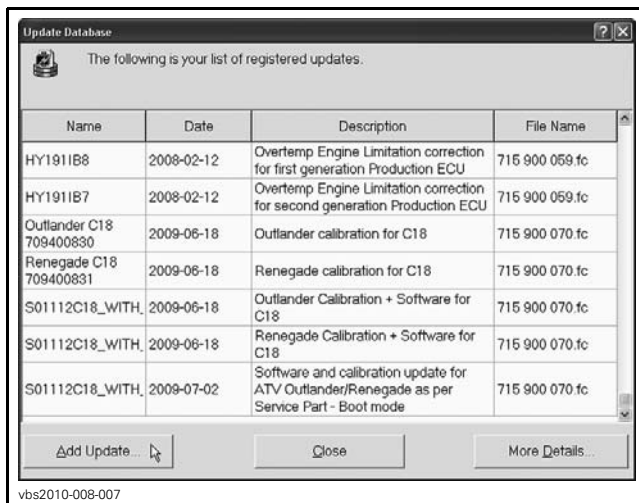
5. If the following message is displayed, it should disappear as soon as B.U.D.S. detects communication. If it remains displayed, click the button "Try active detection mode".



6. Click on *TOOLS* drop down list and select:  
– *UPDATE DATABASE...*



7. Click on *ADD UPDATE*.



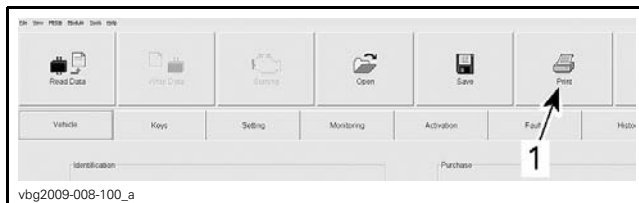
TYPICAL

8. Locate the previously downloaded calibration update file and click *OPEN*.
9. Click "*OK*" when the confirmation message appears.
10. Click *CLOSE* in the "Update Database".

## ► Printing B.U.D.S. Report (Prior to Update)

The B.U.D.S. report must be printed BEFORE doing the update procedure. The report must be handed to the customer.

1. Click on *PRINT* button.



1. *PRINT* button

2. In the PAGES TO PRINT area, uncheck all selections except VEHICLE.



1. *Check VEHICLE only*

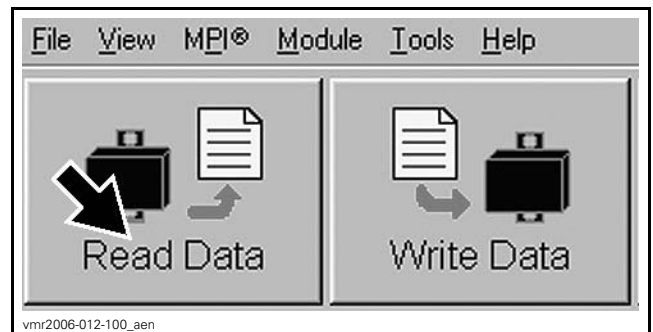
3. *Keep this report for the customer.*

4. *Reprint or do a copy of the report for your records.*

## Vehicle Update

**NOTICE** Continuous power to the computer and to the vehicle ECM is mandatory during this operation.

1. Disable computer screen saver. Provide enough electrical supply to the computer to avoid interruptions.
2. Check vehicle battery voltage. The battery must be fully charged or use a power pack to have enough power.
3. In B.U.D.S. window, click on *READ DATA* button.



4. Click on *MODULE* drop down list and select:
  - Cluster
  - Update.

5. ► Select the proper update.

NAME	DESCRIPTION
<u>Renegade NoClock</u> <u>03 12 10 715900115</u>	<u>DS 450 CE speed</u> <u>calibration for cluster</u> <u>without clock.</u>
<u>Renegade RTC</u> <u>03 12 10 715900114</u>	<u>DS 450 CE speed</u> <u>calibration for cluster</u> <u>with clock.</u>

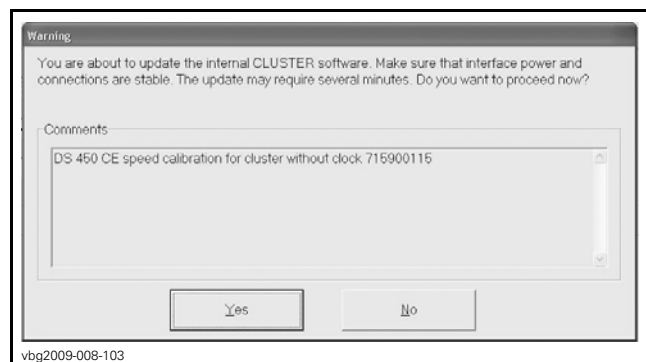
6. Click on *OK* button.

7. Confirm multifunction gauge update by clicking *YES* button.

NOTE: Depending which update has been selected, one of these 2 messages will be displayed.

DS 450 CE speed calibration for cluster without clock 715900115

DS 450 CE speed calibration for cluster with clock 715900114

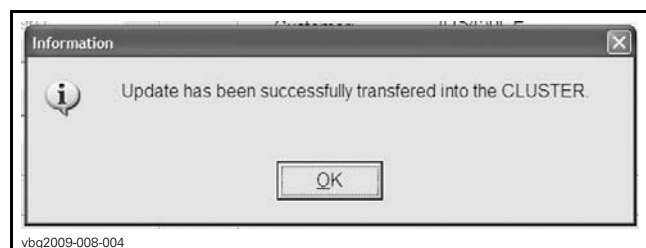


**TYPICAL** ◀

**NOTICE** While the vehicle is updated, an hour glass will appear on the computer. The computer screen might also blank out or seem to be frozen. **DO NOT TOUCH ANYTHING** until the following message appears.

Update has been successfully transferred

8. Click on OK button.



NOTE: An automatic "Read Data" will be done.

9. Confirm that BRP Software Number is updated by selecting:

- Module
- Cluster
- Information.

▶ **BRP SOFTWARE NUMBER**

715 900 114 or 715 900 115

BRP Assembly Number:	710001983
BRP Software Number:	715900XXX ◀
Supplier Part Number:	556233
Serial Number:	0000000000
Diagnosis Code Bytes:	03010300
Code Modification Fingerprint:	10/10/26 02010
Vehicle Model:	0000000000
Vehicle Serial Number (VIN):	000000000000000000
Customer Name:	DS450CE
Delivery Date:	101026

vbg2009-008-104\_a

**TYPICAL**

10. Click on Close button.

11. Select **Setting** page.

12. Select **Cluster** tab.

13. Set multifunction gauge parameters according to vehicle usage.

The "Cluster" settings screen is shown with the following numbered callouts: 1. Cluster Language (dropdown menu), 2. Cluster Mode (radio buttons: Vehicle Speed, Engine RPM, RPM+Speed), 3. Cluster Units (radio buttons: Imperial, Metric), 4. Cluster Racing (radio buttons: Standard, Racing), 5. Cluster Country (radio buttons: NA, CE). The "ECM" and "Cluster" tabs are visible at the bottom. The file path "vbg2009-008-233\_a" is visible at the bottom left.

**SET THE FOLLOWING PARAMETERS**

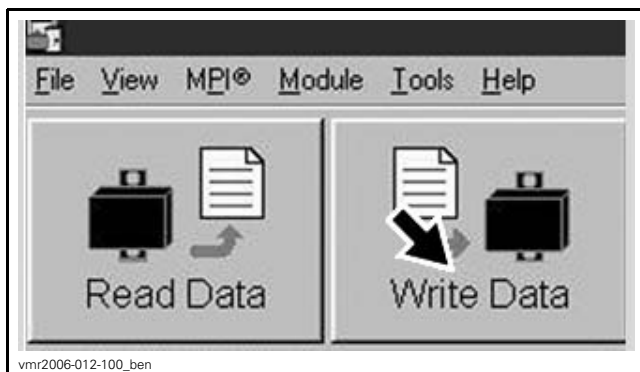
1. Cluster Language
2. Cluster Mode
3. Cluster Units
4. Cluster Racing
5. Cluster Country

NOTE: It is IMPORTANT to select CE in the Cluster Country area. ◀

14. Select **Vehicle** page in B.U.D.S.

14.1 Click on **Reset Service Info.**

15. Click on **WRITE DATA** button.



**WRITE DATA BUTTON**

16. Click **YES** to confirm.
17. Click on **EXIT** button to end session.
18. Disconnect all cables and hardware from vehicle.

## Speedometer Testing

1. Turn ignition key to ON.
2. Ensure that speedometer works properly.

## ► **B.U.D.S. Report for Customer**

The B.U.D.S. report must be handed to the customer and a copy should be kept for the dealer records. ◀

## WARRANTY

### Vehicles Claiming

Submit a warranty claim using the following information:

WARRANTY INFORMATION	
Campaign Number	2009-0009
Claim Type	Campaign Claim
Flat Rate	0.3 hour

### Claiming Procedure

For claiming procedure, refer to the *DEALER/DISTRIBUTOR WARRANTY GUIDE*.

---

## SERIAL NUMBER LISTING OF INVOLVED VEHICLES

***Model: 3F9F***

000002

From 000136 to 000173

***Model: 3F9G***

From 000001 to 000324

***Model: 3G9D***

From 002931 to 003284

From 003286 to 003296

From 003298 to 003308

From 003310 to 003420

***Model: 3H9C***

From 000798 to 000807

From 000833 to 000856

From 000919 to 001059

# SAFETY RECALL NOTICE



**Bombardier Recreational Products Inc.**

565 de la Montagne Street  
Valcourt, Québec, Canada J0E 2L0

[www.brp.com](http://www.brp.com)

Date: October 27, 2010

Re: Can-Am™ DS 450™ Speedometer Inaccuracy (**CE MODELS ONLY**)

**2009 DS 450 CE**

**2009 DS 450 X™ CE**

**2009 DS 450 X mx CE**

Dear Can-Am ATV Owner,

**This notice is sent to you in accordance with the requirements of the General Product Safety Direction of the European Community and other applicable laws.**

**What is the reason for this notice?**

Bombardier Recreational Products Inc. ("BRP") is conducting a voluntary safety recall of certain 2009 Can-Am ATV DS 450 CE models. **Our records indicate that you are the owner of a potentially affected vehicle.**

**What is the potential problem?**

Involved vehicles have inaccurate speedometer reading (30% less than actual speed). This situation could result in vehicle being driven at illegal speeds and could alter the judgment of the driver in some riding conditions. This condition may increase the risk of a crash with injury or death.

**What should you do?**

Call an authorized BRP Can-Am ATV dealer and make an appointment to have your vehicle serviced. *The dealer will perform this work at no charge to you.* Should you choose to ride your vehicle prior to this service, we urge you to be aware of this condition.

**If you have questions, please contact your authorized BRP dealer which can be found at [www.brp.com](http://www.brp.com).**

This notice was mailed to you according to the most current information we have available. If you no longer own this vehicle or some information in this notice is incorrect, please inform your local BRP dealer at your earliest convenience.

We apologize for any inconvenience this may cause you, but we have taken this action in the interest of your safety. Thank you for your immediate attention to this matter.

Sincerely,  
After-Sales Service Department  
Bombardier Recreational Products Inc.

Ski-Doo  
Lynx  
Sea-Doo  
Evinrude  
Johnson  
Rotax  
Can-Am