



**VEHICLE COMMUNICATION KIT (VCK)
(P/N 529 035 844)**

PARTS DELIVERED IN THE KIT



- | | |
|--|-------------------------|
| 1. MPI (Multi Protocol Interface) | 5. Adapter (DB9 - DB25) |
| 2. Diagnostic Cable 7.6 m (25 ft) | 6. D.E.S.S.™ Adapter |
| 3. 6-Pin Adapter | 7. Communication Cable |
| 4. B.U.D.S.™ Installation CD (Bombardier Utility and Diagnostic Software), (not illustrated) | |

Also required 4 "AA" type batteries (not supplied).

MINIMUM SYSTEM REQUIREMENTS

To install B.U.D.S. (Bombardier Utility and Diagnostic Software) you need:

- 80486 processor or higher (Pentium recommended).
- Microsoft Windows 95/98, NT 4.0, ME, XP or Windows 2000.
- 4 Mb of RAM (16 Mb (or higher) recommended).
- 10 Mb of hard disk space (compact).
- CD ROM disk drive.
- VGA or higher resolution display (SVGA).
- Mouse or other pointing device.
- One unused serial port.

NOTE: B.U.D.S. does not work with Windows 3.x.

SOFTWARE INSTALLATION

B.U.D.S. is delivered with an interactive software installer which guides you through the installation process.

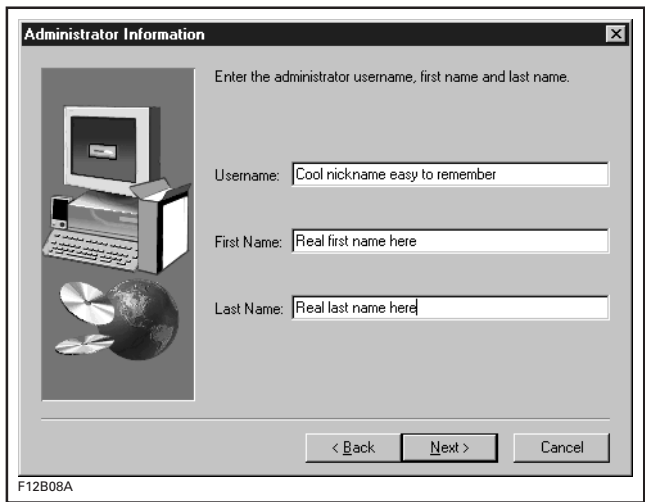
To install the software, insert the CD-ROM disc into the CD-ROM drive and wait until the installation starts.

If the installer does not start automatically, then choose **Run** from the Windows **Start** menu and type d:\setup.exe, where "d" is the letter of your CD-ROM drive^①, or use the *Explorer* to locate and double-click on setup.exe.

Follow on-screen instructions paying attention to these particular boxes.

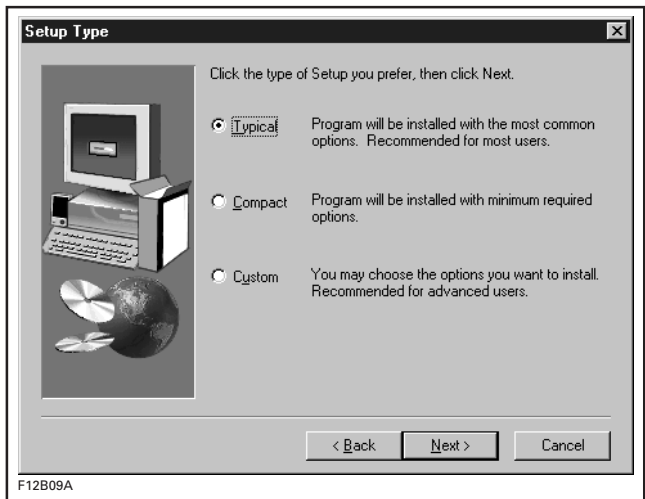
NOTE: The first name entered at installation will be given the control to manage all future persons entering the software. He will give rights to other persons to enter the software or revoke the rights to use it. Nobody can use the software until the first user (the master technician) gives him the right to use the software.

^①May vary depending on the computer configuration.

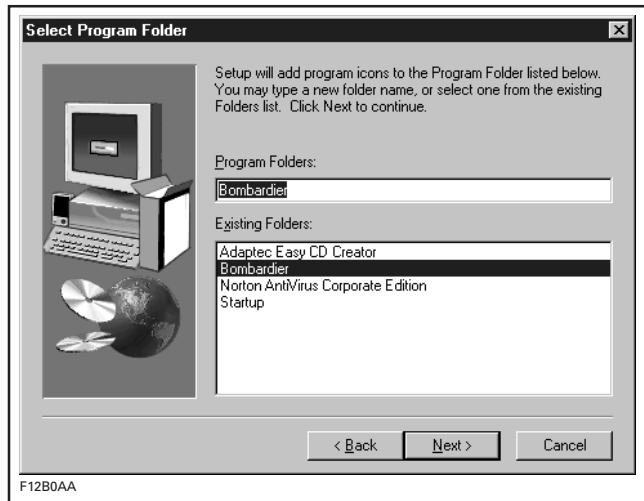


When entering the requested password, it is important to remember it since it is the only one available when running B.U.D.S. for the first time. If lost, you will have to re-install the software.

If you have enough hard disk space, we recommend to select the **Typical** option. This will install all components of the software. Otherwise, select **Custom** to choose the desired components.



We recommend using the default program folder **Bombardier** to ease future support you may require.



USING B.U.D.S.

To start the software, use the shortcut on the desktop or click the button **Start** on the Windows desktop. Choose **Program, Bombardier** (or the sub folder you chose) then **B.U.D.S.**

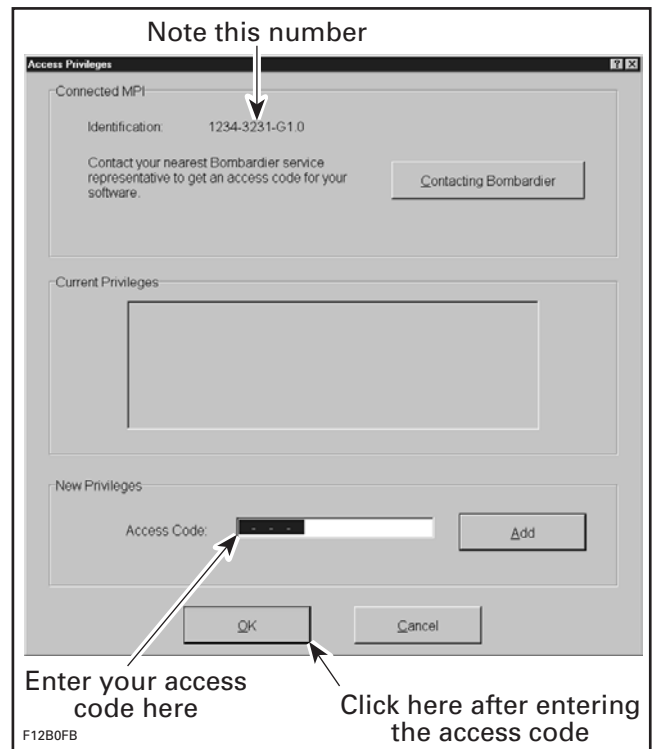
FIRST TIME USE

Each time you first use B.U.D.S. G2.0.0 with an MPI (Multi Protocol Interface), it will request an access code to allow its use. Note the **Control number** and call your Service Department. Attendant will ask you the control number and give you an **Access code**.

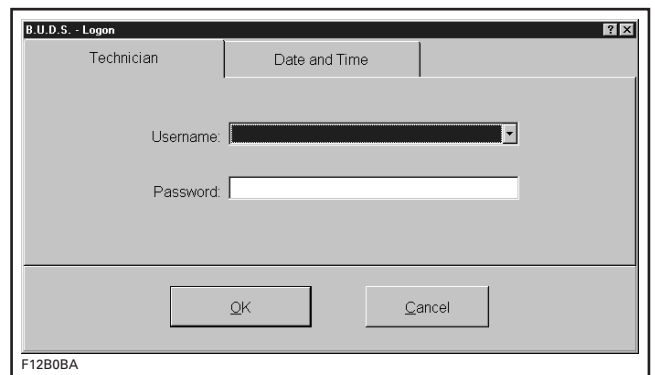
NOTE: It is not necessary to keep B.U.D.S. open while calling Service Department. Access code can be entered anytime when ready.

To contact the nearest Service Department:

| Country | Phone Number |
|---------------|------------------|
| United States | 1 800 366-6992 |
| Canada | 1 800 361-9980 |
| South America | 407-722-4000 |
| Singapore | 65-22-767-55 |
| France | 33-1-41-79-02-40 |



Then enter the user name (nickname) and password you previously entered to finally access the software.



For more information pertaining to the use of B.U.D.S., use its help which contains detailed information on its functions.

HELP IN B.U.D.S.

Three methods to get help are available:

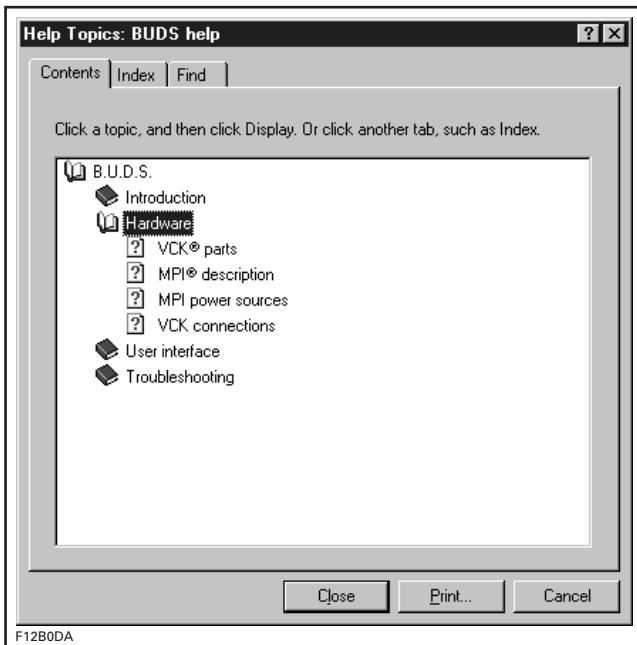
1. Click on the Help button to open the help system.
2. You can call the in-context help from anywhere in B.U.D.S. by doing the following:
 - Click the Help menu.
 - Choose "What's This?". A cursor with a question mark will appear.
 - Position the cursor over the area where you want help.
 - Click to call the specific information.
3. You can call the in-context help when you are in a data-entry area, by pressing the F1 function key of your computer keyboard.

ELECTRICAL CONNECTIONS

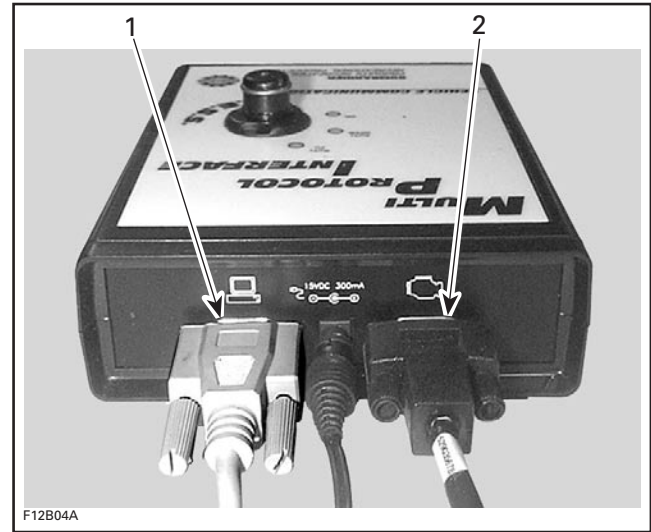
WARNING

There is a potential risk of electrocution when working in contact with water. Be careful not to touch water while working with the VCK.

For electrical connections look into the following help topic.



Connect computer through MPI as shown.



1. Connect to computer through communication cable no. 7 and adapter no. 5 if needed
2. Connect to vehicle through diagnostic cable no. 2

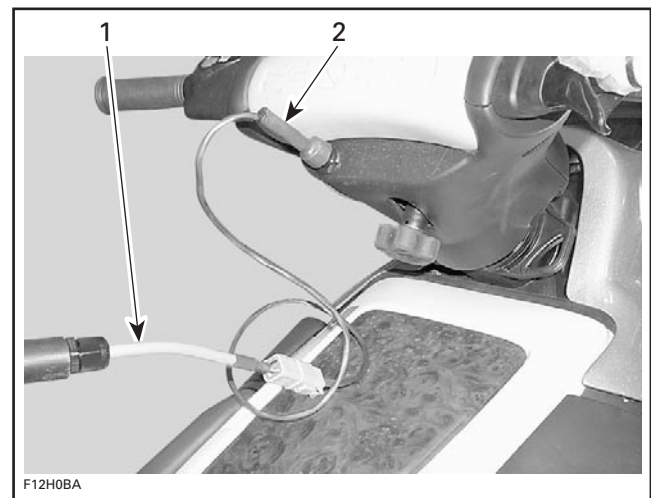
WORKING ON WATERCRAFT

Up to and including 2002 model year watercraft.

For 2003 model year watercraft, refer to respective *Predelivery Bulletin* or appropriate *Shop Manual*.

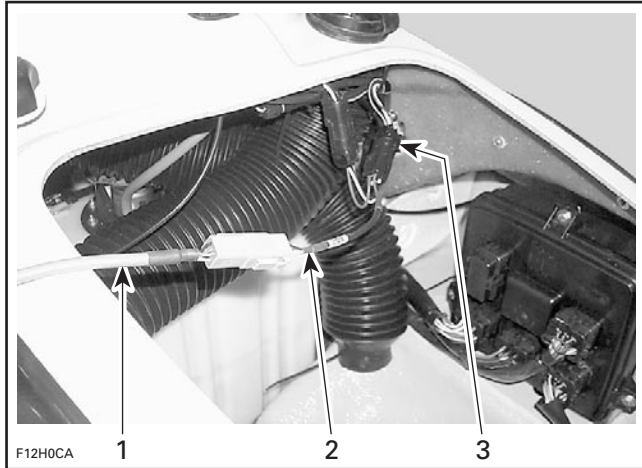
Refer to the chart below to know what adapter to use.

D.E.S.S. Post Connection



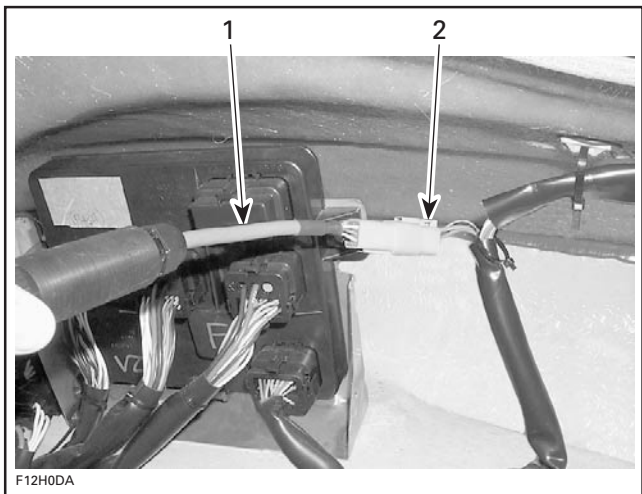
1. 6-pin adapter no.3
2. D.E.S.S. adapter no. 6

RFI Models Through the 4-Pin Connector



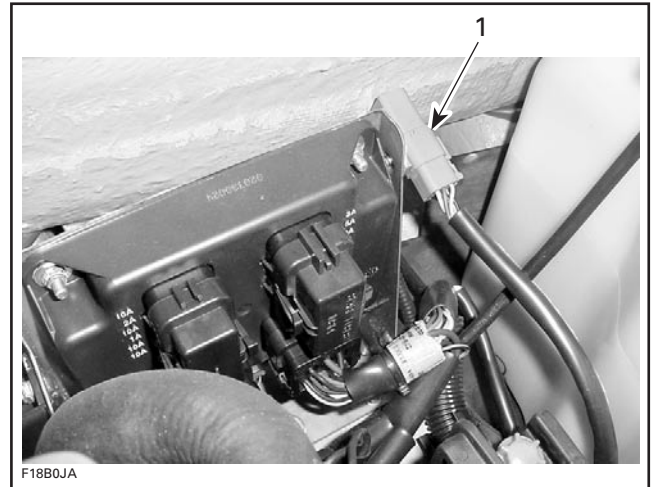
1. 6-pin adapter no. 3
2. RFI 4-pin adapter (P/N 529 035 685)
3. Connector under opening of front storage area

DI Models Through the 6-Pin Connector



1. 6-pin adapter no. 3
2. Connector close to MPEM

WITH 1503 ENGINE



1. Adapter

After all connections are done, power-up the vehicle's module with the appropriate way depending on the vehicle.

IMPORTANT: When using B.U.D.S., ensure that the protocol matching the connection used is properly selected in "MPI" under "Choose protocol" as per the following chart.

| TYPE OF CONNECTION | ADAPTER TO USE | PROTOCOL TO CHOOSE |
|--|---------------------|--------------------|
| Through D.E.S.S. post | 6-pin and D.E.S.S. | D.E.S.S. |
| RFI models through the 4-pin connector | 6-pin and RFI 4-pin | |
| DI models through the 6-pin connector | 6-pin | 947-DI |
| 1503 | 6-pin | KW-2000 |

WORKING ON SNOWMOBILES

Up to and including 2003 model year snowmobiles.

Ensure that the protocol matching the connection used is properly selected in "MPI" under "Choose protocol" as per the following chart.

| TYPE OF CONNECTION | ADAPTER TO USE | PROTOCOL TO CHOOSE |
|--------------------------|----------------|--------------------|
| Up to 2002 with D.E.S.S. | D.E.S.S. | D.E.S.S. |
| 2003 Liquid Cooled | 6-pin | |
| V-1000 S.D.I. | 6-pin | KW-2000 |

For 2004 model year snowmobiles, refer to respective *Predelivery Bulletin* or appropriate *Shop Manual*.

All 2002 and Previous Model Year Snowmobiles Equipped with D.E.S.S.



CONNECTED ONTO D.E.S.S. POST

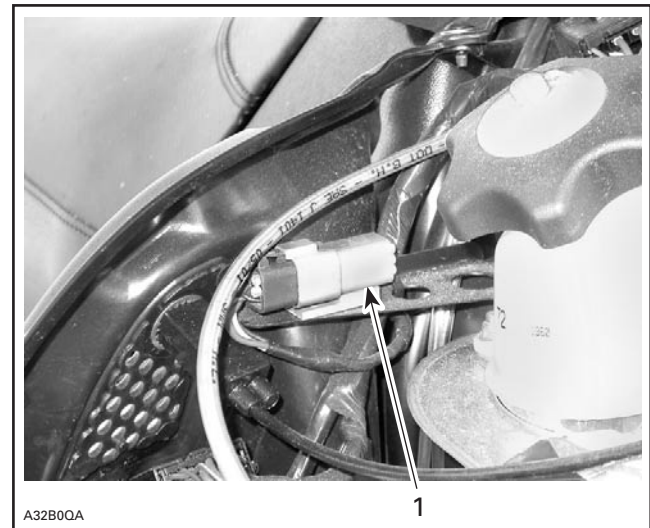
All 2003 Liquid-Cooled Models

MX Z-REV



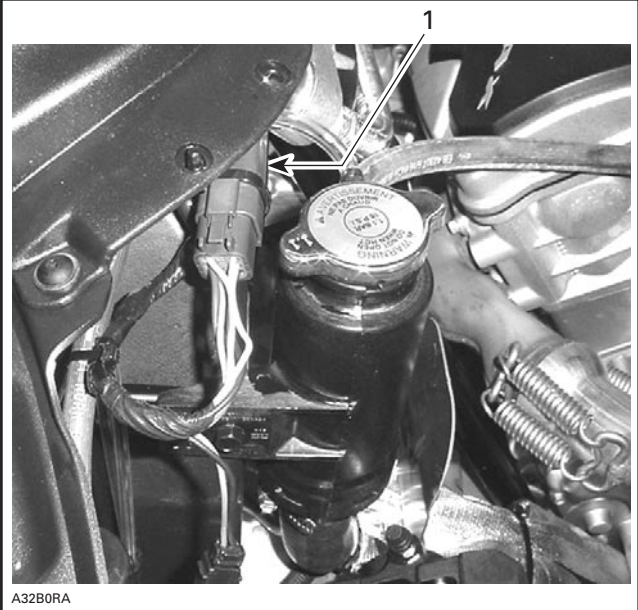
1. Adapter

MX Zx



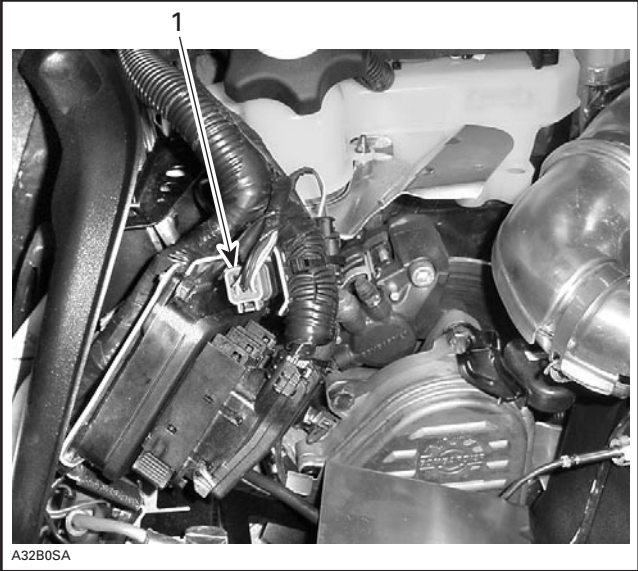
1. Adapter

V-1000



1. Adapter

SDI



1. Adapter

529 035 844

| | | | |
|----|-------------|---|--|
| 1. | 529 035 677 | MPI (Multi Protocol Interface) | Interface multiprotocole (MPI) |
| 2. | 529 035 678 | Diagnostic Cable 7.6 m (25 ft) | Câble de diagnostic de 7.6 m (25 pi) |
| 3. | 529 035 679 | 6-Pin Adapter | Adaptateur à 6 broches |
| 4. | 529 035 768 | B.U.D.S. (Bombardier Utility and Diagnostic Software) Installation CD (not illustrated) | CD d'installation du logiciel B.U.D.S. (Bombardier Utility and Diagnostic Software) (non illustré) |
| 5. | 529 035 681 | Adapter (DB9 - DB25) | Adaptateur (DB9 - DB25) |
| 6. | 529 035 684 | D.E.S.S.™ Adapter | Adaptateur pour D.E.S.S.® |
| 7. | 529 035 697 | Communication Cable | Câble de communication |